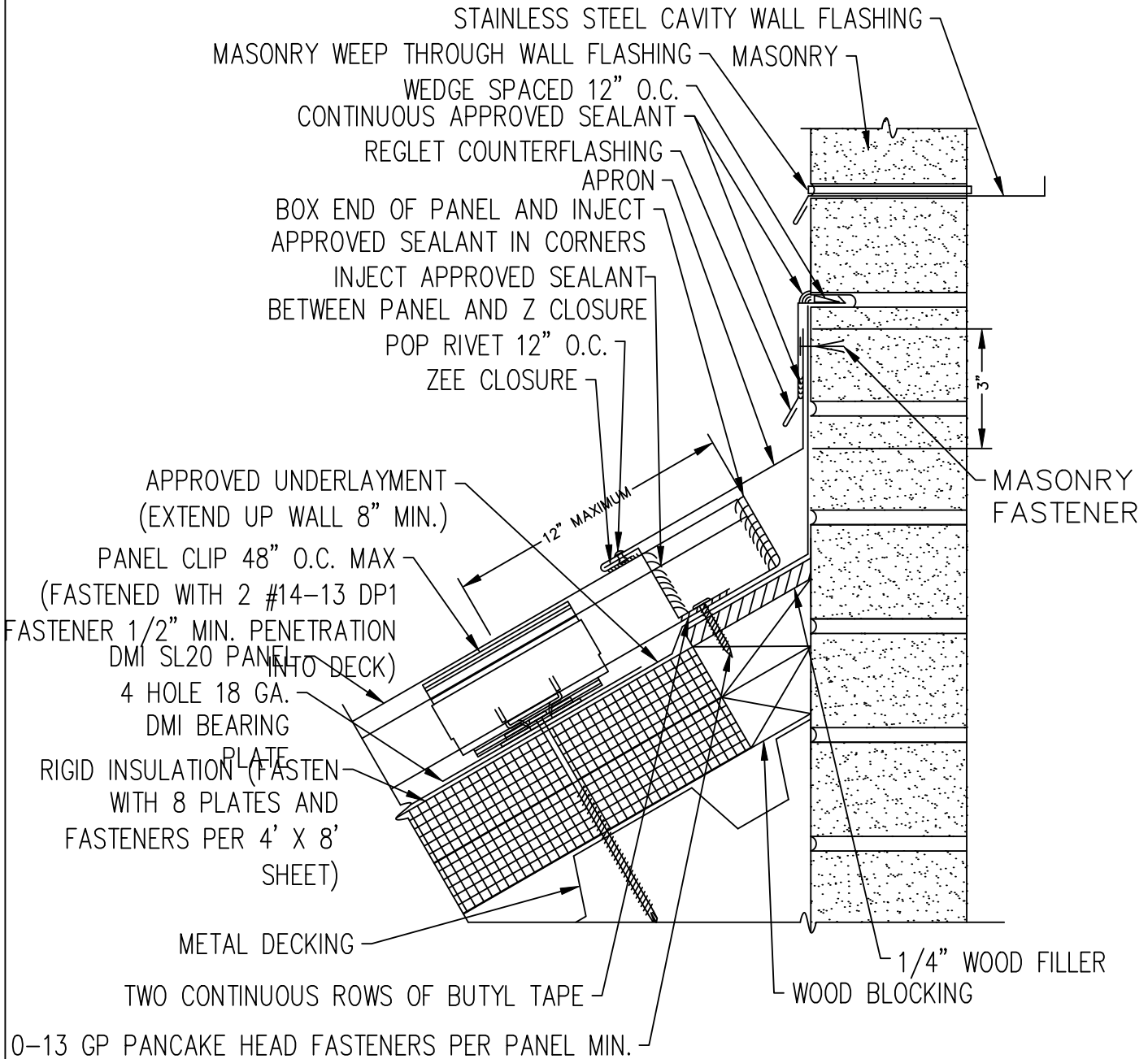


NOTE  
 REGLET FLASHING TO BE INSTALLED BELOW ALL WEEP HOLES.  
 SURFACED MOUNT COUNTERFLASHINGS NOT ACCEPTABLE..

FLASHING LAP NOTE  
 LAP APRON AND REGLET 2" MINIMUM WITH 2 ROWS OF BUTYL SEALANT.



**APRON**

**DIMENSIONAL METALS, INC.**

JANUARY  
 2015

CAP

3" = 1'-0"