

# HEADBOX MOUNTING OPTIONS

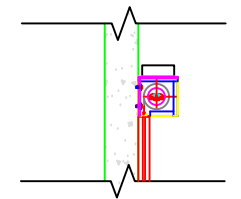
**1**  
EXPOSED CEILING

**2**  
FLUSH WITH CEILING

**3**  
SHADOW GAP

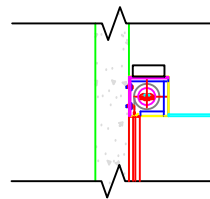
**4**  
DOWNSTAND

**A**  
FACE MOUNT



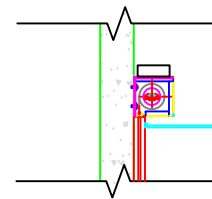
HEADBOX EXPOSED WITH FACE MOUNT

**A1**



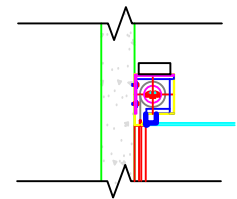
FLUSH CEILING WITH FACE MOUNT

**A2**



SHADOW GAP CEILING WITH FACE MOUNT

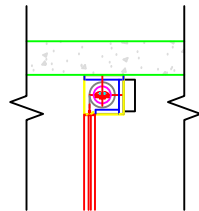
**A3**



DOWNSTAND WITH FACE MOUNT

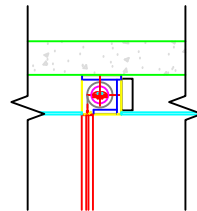
**A4**

**B**  
SLAB MOUNT



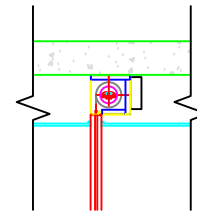
HEADBOX EXPOSED WITH TOP SIDE TO SLAB MOUNT

**B1**



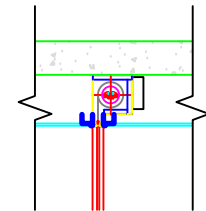
FLUSH CEILING WITH TOP SIDE TO SLAB MOUNT

**B2**



SHADOW GAP CEILING WITH TOP SIDE TO SLAB MOUNT

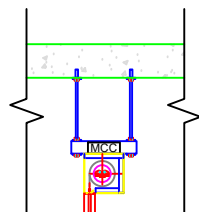
**B3**



DOWNSTAND WITH TOP SIDE TO SLAB MOUNT

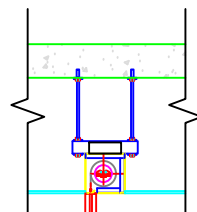
**B4**

**C**  
UNISTRUT MOUNT



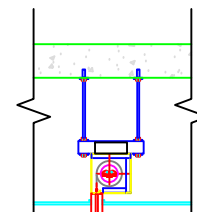
HEADBOX EXPOSED WITH UNISTRUT MOUNT

**C1**



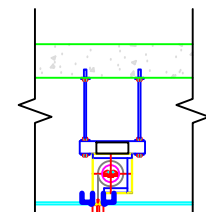
FLUSH CEILING WITH UNISTRUT MOUNT

**C2**



SHADOW GAP CEILING WITH UNISTRUT MOUNT

**C3**



DOWNSTAND WITH UNISTRUT MOUNT

**C4**