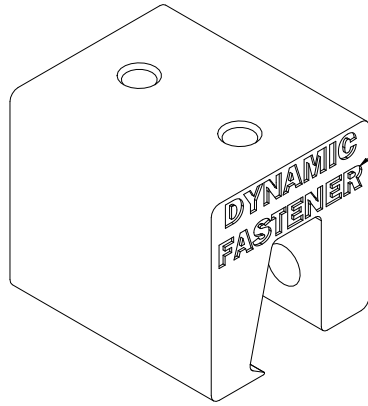


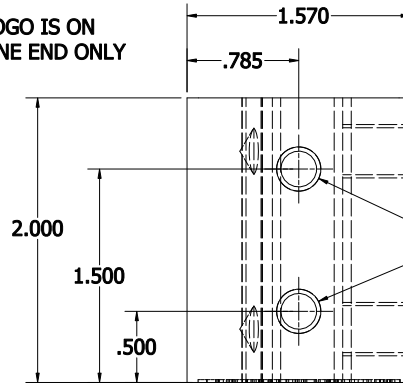
- NOTE:**
1. DIMENSIONS AND NOTES ON THIS DRAWING SUPERSEDE TITLE BLOCK
 2. ALUMINUM ASSOCIATION STANDARD TOLERANCES APPLY FOR EXTRUSION PROFILE.
 3. ALL DIMENSIONAL LIMITS APPLY BEFORE COATING, I.E. PAINT COAT OR ANODIZE COAT.

REVISION HISTORY				
REV	DESCRIPTION	ECN #	MFG APPRO	DATE
0				



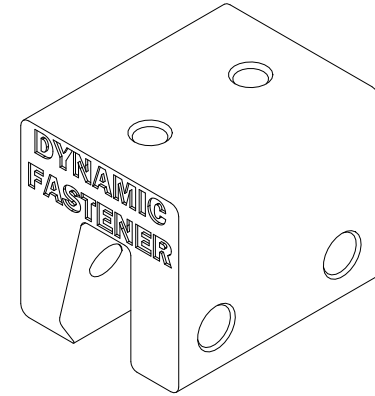
ISOMETRIC VIEW

LOGO IS ON ONE END ONLY

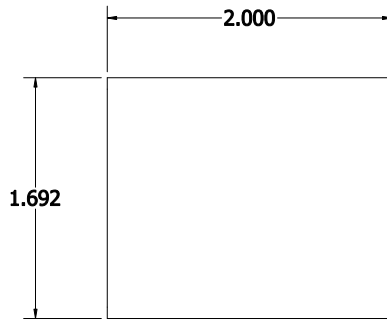


TOP VIEW

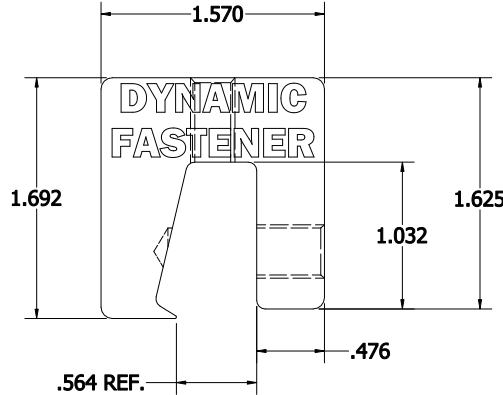
5/16-18 UNC - 2B x THRU
.050" CHAMFER



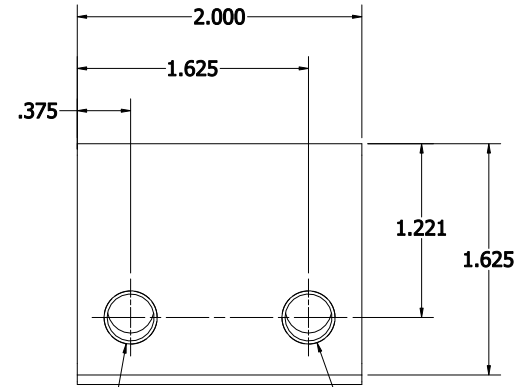
ISOMETRIC VIEW



LEFT VIEW



FRONT VIEW,
SEE DIE PRINT AF-5239



RIGHT VIEW

3/8-24 UNF - 2B x THRU
ONE WALL AND LEAVE .030"
COUNTERSINK ON THE OPPOSITE SIDE,
.050" CHAMFER

3/8-24 UNF - 2B x THRU
ONE WALL AND LEAVE .030"
COUNTERSINK ON THE
OPPOSITE SIDE,
.050" CHAMFER

DYNAMIC FASTENER **ITEM CODE:**
5239F9002

THE INFORMATION CONTAINED IN THIS DRAWING IS THE SOLE PROPERTY OF DYNAMIC FASTENER. ANY REPRODUCTION IN PART OR WHOLE WITHOUT THE WRITTEN PERMISSION OF DYNAMIC FASTENER IS PROHIBITED.

DIMENSIONS ARE IN INCHES.
ALUMINUM ASSOCIATION STANDARD
TOLERANCES APPLY FOR EXTRUSION
PROFILE ONLY, UNLESS OTHERWISE
SPECIFIED, FAB DIMS TOLERANCES ARE:
FRACTIONAL: ±.01"; ANGULARITY: ±1°
[.XX: ±.020] [.XX: ±.031] [.X: ±.063]
DRAWING GENERATED BY INVENTOR SOFTWARE

DRAWN BY: DHLE	DATE: 8/25/2015	DYNAMIC FASTENER		
FINISH: MILL				
MASS: 0.367 lbmass		CUSTOMER: DYNA-GUARD		
MATERIAL: EXT DIE AF-5239		PART NAME: DC-NF CLAMP		
ITEM CODE: 5239F9002		SIZE C	DRAWING NO.: DC-NF	REV. 0
LENGTH: 2"		DO NOT SCALE DRAWING		SHEET 1 OF 1
CAD FILE: M/FAB/ALEX/SAP DOC/DYNAMIC FASTENER				