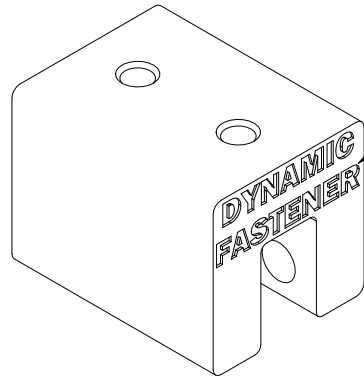


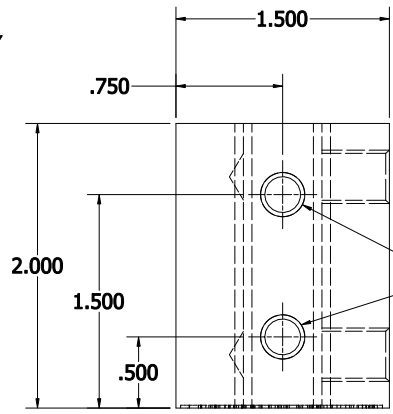
NOTE:
 1. DIMENSIONS AND NOTES ON THIS DRAWING SUPERSEDE TITLE BLOCK
 2. ALUMINUM ASSOCIATION STANDARD TOLERANCES APPLY FOR EXTRUSION PROFILE.
 3. ALL DIMENSIONAL LIMITS APPLY BEFORE COATING, I.E. PAINT COAT OR ANODIZE COAT.

REVISION HISTORY				
REV	DESCRIPTION	ECN #	MFG APPRO	DATE
0				



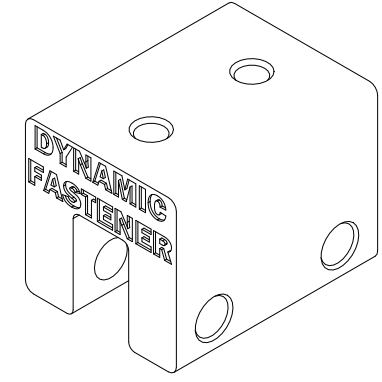
ISOMETRIC VIEW

LOGO IS ON ONE END ONLY

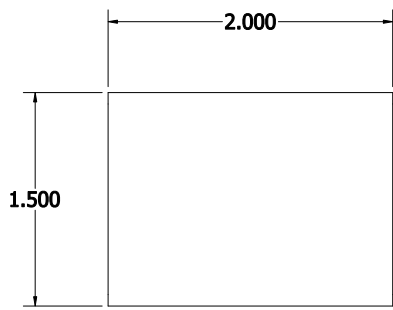


TOP VIEW

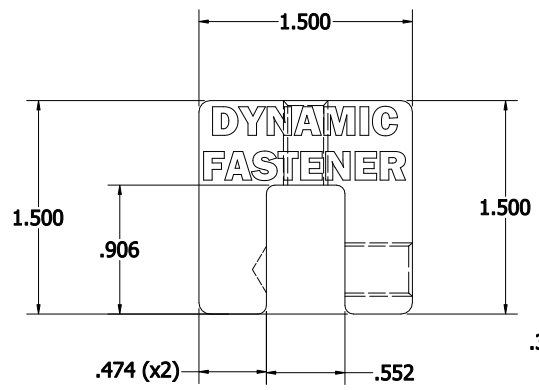
5/16-18 UNC - 2B x THRU
.050" CHAMFER



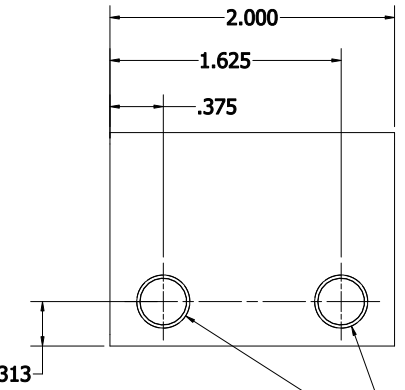
ISOMETRIC VIEW



LEFT VIEW



FRONT VIEW
SEE DIE PRINT AF-5240



RIGHT VIEW

3/8-24 UNF - 2B
x THRU ONE WALL AND LEAVE
.030" COUNTERSINK ON
THE OPPOSITE SIDE,
.050" CHAMFER

DYNAMIC FASTENER ITEM CODE:
5240F9002

THE INFORMATION CONTAINED IN THIS DRAWING IS THE SOLE PROPERTY OF DYNAMIC FASTENER. ANY REPRODUCTION IN PART OR WHOLE WITHOUT THE WRITTEN PERMISSION OF DYNAMIC FASTENER IS PROHIBITED.

DIMENSIONS ARE IN INCHES.
ALUMINUM ASSOCIATION STANDARD TOLERANCES APPLY FOR EXTRUSION PROFILE ONLY, UNLESS OTHERWISE SPECIFIED, FAB DIMS TOLERANCES ARE:
FRACTIONAL: ±.01; ANGULARITY: ±1°~
[.XX: ±.020] [.XX: ±.031] [.X: ±.063]
DRAWING GENERATED BY INVENTOR SOFTWARE

DRAWN BY: DHLE	DATE: 8/25/2015
FINISH: MILL	
MASS: 0.325 lbmass	
MATERIAL: EXT DIE AF-5240	
ITEM CODE: 5240F9002	
LENGTH: 2"	
CAD FILE: M/FAB/ALEX/SAP DOC/DYNAMIC FASTENER	

DYNAMIC FASTENER		
CUSTOMER: DYNA-GUARD		
PART NAME: DC-SL CLAMP		
SIZE C	DRAWING NO.:	REV. 0
DC-SL		
DO NOT SCALE DRAWING		SHEET 1 OF 1