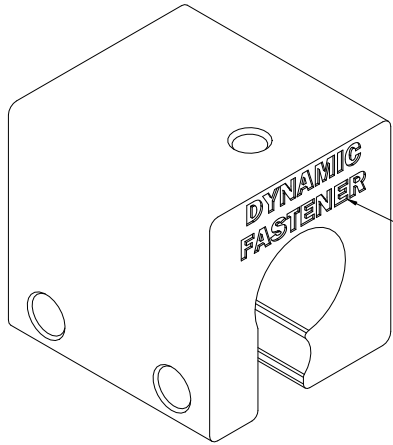


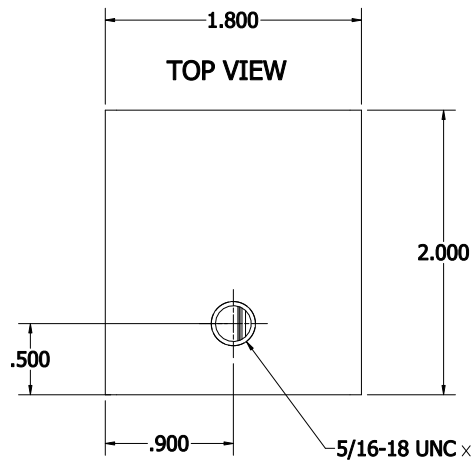
NOTE:
 1. DIMENSIONS AND NOTES ON THIS DRAWING SUPERSEDE TITLE BLOCK
 2. ALUMINUM ASSOCIATION STANDARD TOLERANCES APPLY FOR EXTRUSION PROFILE.
 3. ALL DIMENSIONAL LIMITS APPLY BEFORE COATING, I.E. PAINT COAT OR ANODIZE COAT.

REVISION HISTORY				
REV	DESCRIPTION	ECN #	MFG APPRO	DATE
0				



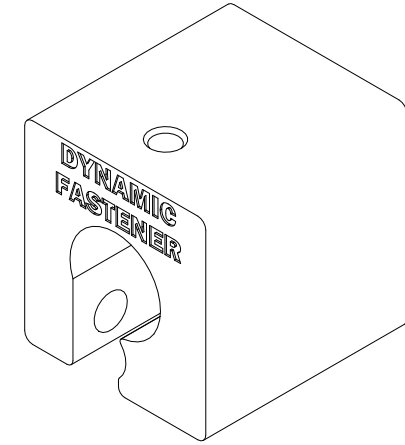
LOGO IS ON ONE END ONLY

ISOMETRIC VIEW

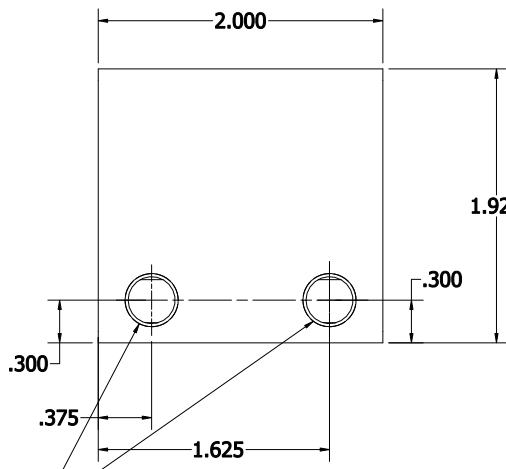


TOP VIEW

5/16-18 UNC x THRU ONE WALL
 .050" CHAMFER

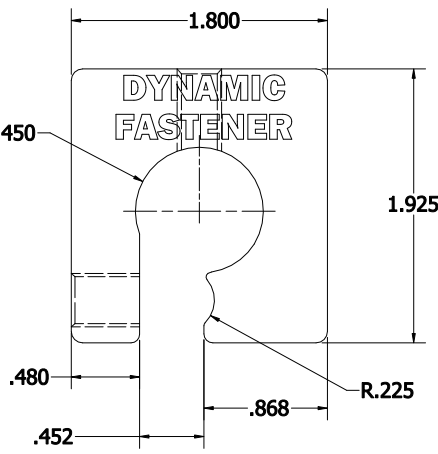


ISOMETRIC VIEW

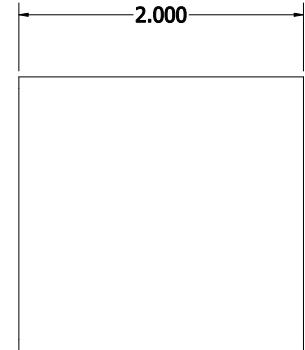


LEFT VIEW

3/8-24 UNF - 2B
 x THRU ONE WALL
 .050" CHAMFER



FRONT VIEW
 SEE DIE PRINT AF-5254



RIGHT VIEW

DYNAMIC FASTENER **ITEM CODE: 5254F9002**

DIMENSIONS ARE IN INCHES.
 ALUMINUM ASSOCIATION STANDARD TOLERANCES APPLY FOR EXTRUSION PROFILE ONLY, UNLESS OTHERWISE SPECIFIED, FAB DIMS TOLERANCES ARE:
 FRACTIONAL: ±.01"; ANGULARITY: ±1°
 [.XXX : ±.020] [.XX : ±.031] [.X : ±.063]
 DRAWING GENERATED BY INVENTOR SOFTWARE

THE INFORMATION CONTAINED IN THIS DRAWING IS THE SOLE PROPERTY OF DYNAMIC FASTENER. ANY REPRODUCTION IN PART OR WHOLE WITHOUT THE WRITTEN PERMISSION OF DYNAMIC FASTENER IS PROHIBITED.

DRAWN BY: DHLE	DATE: 8/25/2015	DYNAMIC FASTENER		
FINISH: MILL				
MASS: 0.488 lbmass		CUSTOMER: DYNA-GUARD		
MATERIAL: EXT DIE AF-5254		PART NAME: DC-ZR CLAMP		
ITEM CODE: 5254F9002		SIZE C	DRAWING NO.:	REV. 0
LENGTH: 2"		DC-ZR		
CAD FILE: M/FAB/ALEX/SAP DOC/DYNAMIC FASTENER		DO NOT SCALE DRAWING		SHEET 1 OF 1