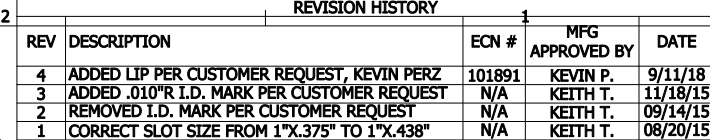


**NOTES**

- 1. DIMENSIONS AND NOTES ON THIS DRAWING SUPERSEDE TITLE BLOCK**
- 2. ALUMINUM ASSOCIATION STANDARD TOLERANCES APPLY FOR EXTRUSION PROFILE.**
- 3. ALL DIMENSIONAL LIMITS APPLY BEFORE COATING, I.E. PAINT COAT OR ANODIZE COAT.**



DYNAMIC FASTENER **ITEM CODE:**  
**5243F9095**

THE INFORMATION CONTAINED IN THIS DRAWING IS THE SOLE PROPERTY  
OF DYNAMIC FASTENER. ANY REPRODUCTION IN PART OR WHOLE  
WITHOUT THE WRITTEN PERMISSION OF DYNAMIC FASTENER IS PROHIBITED.

**DIMENSIONS ARE IN INCHES.**  
ALUMINUM ASSOCIATION STANDARD  
TOLERANCES APPLY FOR EXTRUSION  
PROFILE ONLY. UNLESS OTHERWISE  
SPECIFIED, FAB DIMS TOLERANCES ARE:  
FRACTIONAL:  $\pm .015$ ; ANGULARITY:  $\pm 1'$   
[.XXX  $\pm .020$ ] [.XX  $\pm .031$ ] [.X  $\pm .063$ ]  
DRAWING GENERATED BY INVENTOR SOFTWARE

<b>DRAWN BY:</b> DHLE	<b>DATE:</b> 8/20/2015
<b>FINISH:</b> MILL	
<b>MASS:</b> N/A	
<b>MATERIAL:</b> ALUM ALLOY 6005A-T6	
<b>ITEM CODE:</b> 5243F9095	
<b>LENGTH:</b> 95.875"	

# DYNAMIC FASTENER

CUSTOMER: DYNAMIC FASTENER

PART NAME: 4"PUNCHED DYNA-GUARD

SIZE	DRAWING NO.:
C	4IN CENT PUNCHED DYNA-GUARD

REV  
4

DO NOT SCALE DRAWING	SHEET 1 OF 1
----------------------	--------------