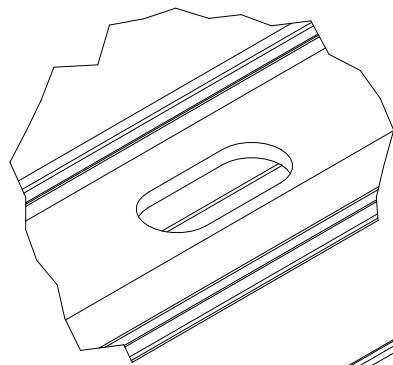
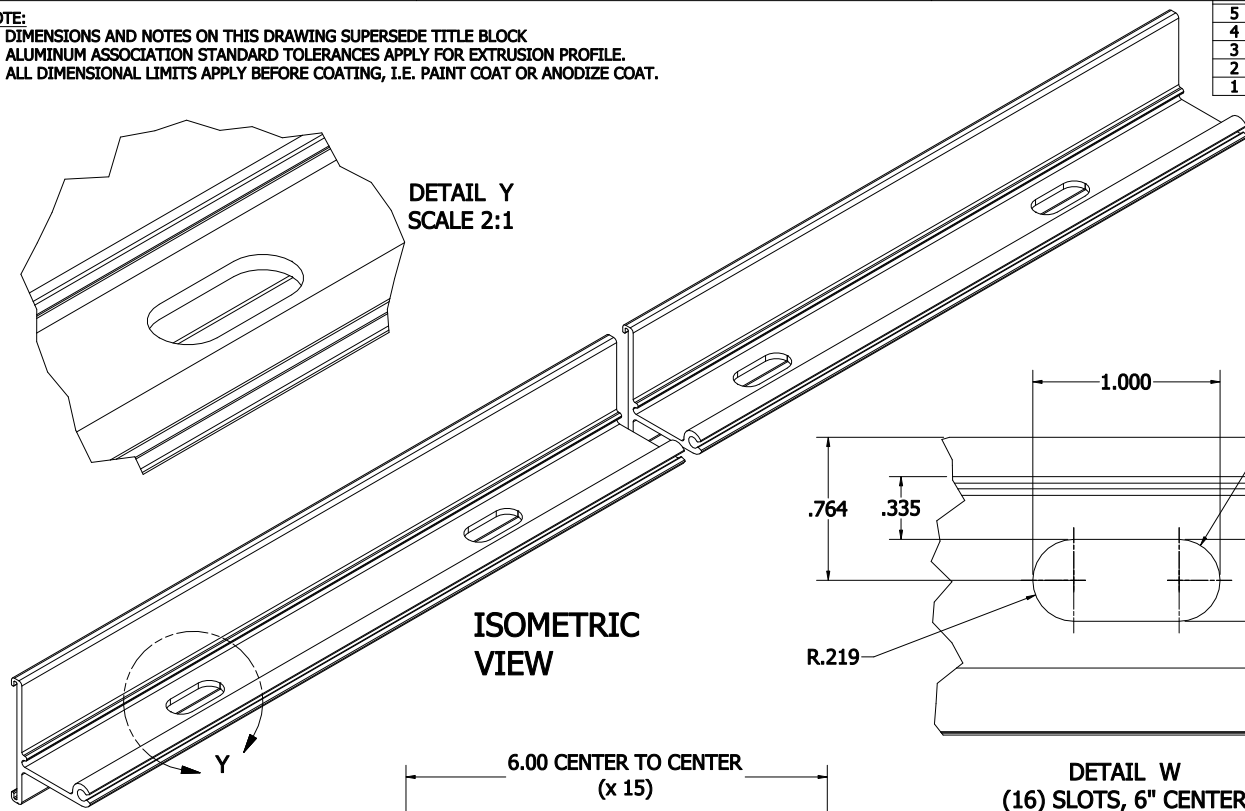


REVISION HISTORY				
REV	DESCRIPTION	ECN #1	APPROVED BY	DATE
5	ADDED LIP PER CUSTOMER REQUEST, KEVIN PERZ	101891	KEVIN P.	9/11/18
4	CHGED TO F9098 TO GO WITH 4.5" SPLICE	N/A	DUC LE	12/10/17
3	ADDED .010"R I.D. MARK PER CUSTOMER REQUEST	N/A	KEITH T.	11/18/15
2	REMOVED I.D. MARK PER CUSTOMER	N/A	KEITH T.	09/14/15
1	CORRECT SLOT SIZE FROM 1"X.375" TO 1"X.438"	N/A	KEITH T.	08/20/15

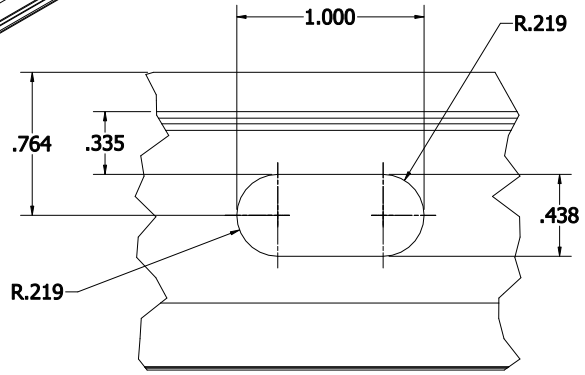
NOTE:
 1. DIMENSIONS AND NOTES ON THIS DRAWING SUPERSEDE TITLE BLOCK
 2. ALUMINUM ASSOCIATION STANDARD TOLERANCES APPLY FOR EXTRUSION PROFILE.
 3. ALL DIMENSIONAL LIMITS APPLY BEFORE COATING, I.E. PAINT COAT OR ANODIZE COAT.



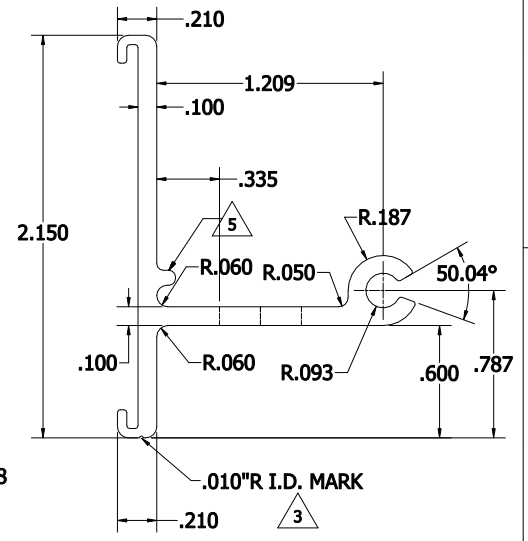
DETAIL Y
SCALE 2:1



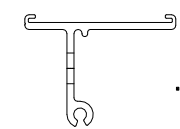
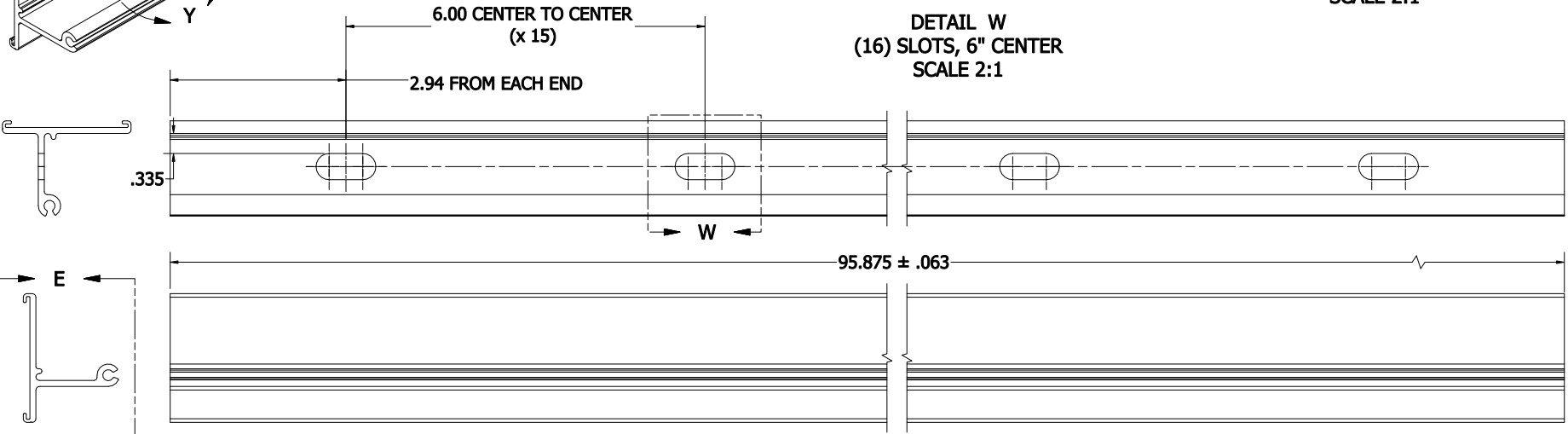
ISOMETRIC VIEW



DETAIL W
(16) SLOTS, 6" CENTER
SCALE 2:1



DETAIL E
SEE DIE PRINT FOR DETAILED
SCALE 2:1



EXT. VIEW
SEE DIE PRINT
AF-5243

DYNAMIC FASTENER **ITEM CODE: 5243F9098**

Note: This part must go with 4.5" Splice

THE INFORMATION CONTAINED IN THIS DRAWING IS THE SOLE PROPERTY OF DYNAMIC FASTENER. ANY REPRODUCTION IN PART OR WHOLE WITHOUT THE WRITTEN PERMISSION OF DYNAMIC FASTENER IS PROHIBITED.

DIMENSIONS ARE IN INCHES.
 ALUMINUM ASSOCIATION STANDARD TOLERANCES APPLY FOR EXTRUSION PROFILE ONLY, UNLESS OTHERWISE SPECIFIED, FAB DIMS TOLERANCES ARE:
 FRACTIONAL: ±.01"; ANGULARITY: ±1'
 [XXX: ±.020] [XX: ±.031] [X: ±.063]
 DRAWING GENERATED BY INVENTOR SOFTWARE

DRAWN BY: DHLE	DATE: 8/19/2015	DYNAMIC FASTENER	
FINISH: MILL	MASS: N/A		
MATERIAL: ALUM ALLOY 6005A-T61	ITEM CODE: 5243F9098	PART NAME: 6" PUNCHED DYNA-GUARD	
LENGTH: 95.875"	CAD FILE: M/FAB/ALEX/SAP DOC/DYNAMIC FASTENER	SIZE C	DRAWING NO.: 6" CENT PUNCHED DYNA-GUARD
		DO NOT SCALE DRAWING	REV. 5
		SHEET 1 OF 1	