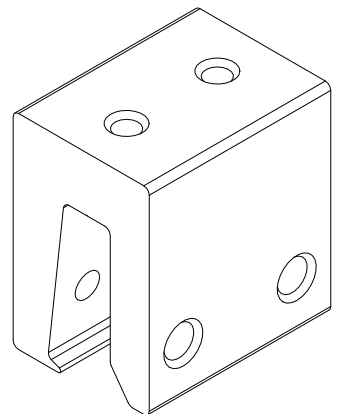


DRAWING APPROVED BY:

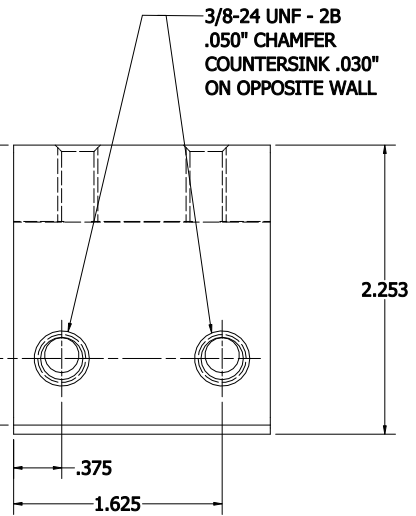
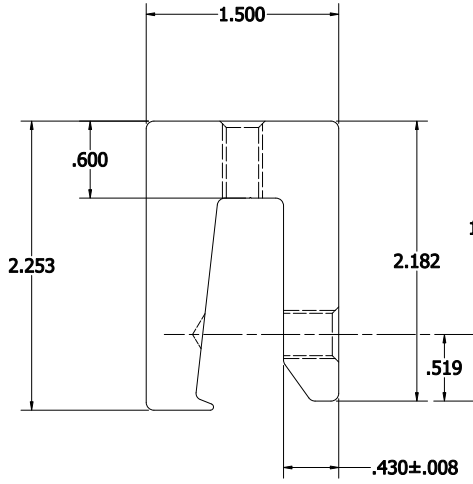
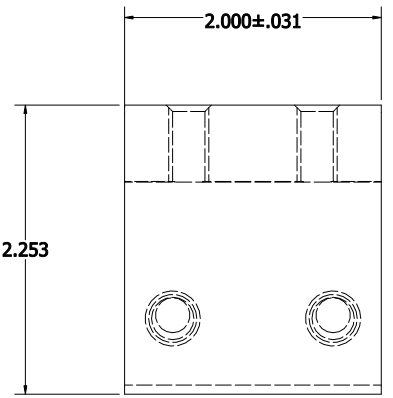
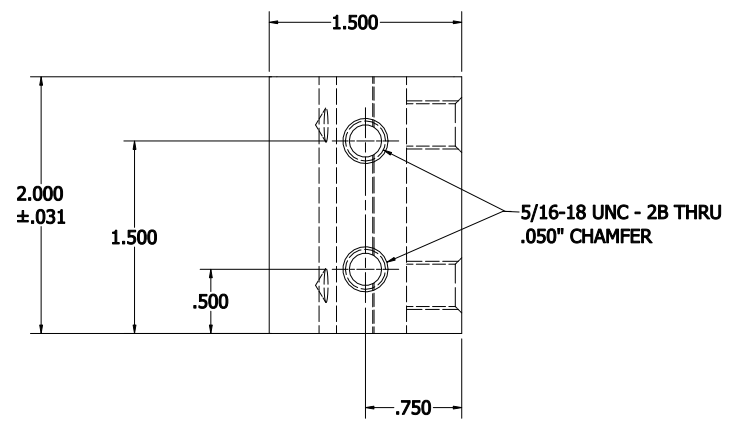
DATE:

NOTE:
 1. DIMENSIONS AND NOTES ON THIS DRAWING SUPERSEDE TITLE BLOCK
 2. ALUMINUM ASSOCIATION STANDARD TOLERANCES APPLY FOR EXTRUSION PROFILE.
 3. ALL DIMENSIONAL LIMITS APPLY BEFORE COATING, I.E. PAINT COAT OR ANODIZE COAT.

REVISION HISTORY				
REV	DESCRIPTION	ECN #	MFG APPROVED BY	DATE
1	REMOVED LOGO PER CUSTOMER	N/A	DLE	8/31/2020



ISOMETRIC VIEW



**EXT. VIEW
 DIE # AF-5807**

DIMENSIONS ARE IN INCHES.
 ALUMINUM ASSOCIATION STANDARD TOLERANCES APPLY FOR EXTRUSION PROFILE ONLY. UNLESS OTHERWISE SPECIFIED, FAB DIMS TOLERANCES ARE:
 FRACTIONAL: ±.01\"/>

THE INFORMATION CONTAINED IN THIS DRAWING IS THE SOLE PROPERTY OF DYNAMIC FASTENER. ANY REPRODUCTION IN PART OR WHOLE WITHOUT THE WRITTEN PERMISSION OF DYNAMIC FASTENER IS PROHIBITED.

DRAWN BY: R.WOODCOCK	DATE: 8/28/2019
FINISH: MILL	
MASS: N/A	
MATERIAL: 6005A-T6, DIE AF-5807	
ITEM CODE: 5807F9002	
LENGTH: 2"	
CAD FILE:	

DYNAMIC FASTENER	
CUSTOMER: DYNAMIC FASTENER	
PART NAME: DC-NF1.5 CLAMP	
SIZE C	DRAWING NO.: DC-NF1.5 CLAMP R1 DYNAMIC FASTENER
	REV. 1
DO NOT SCALE DRAWING	SHEET 1 OF 1

4
3
2
1

D
C
B
A