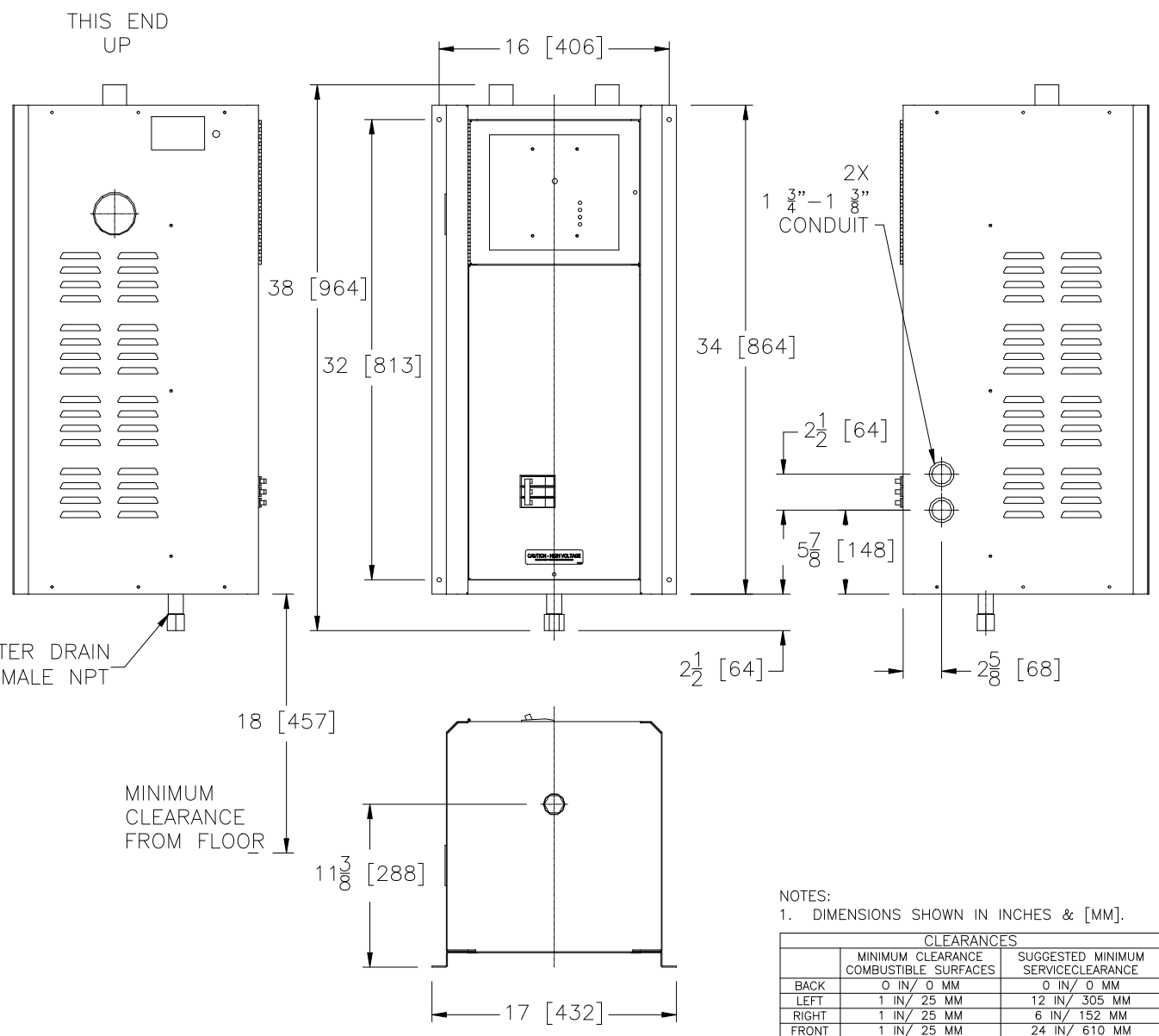
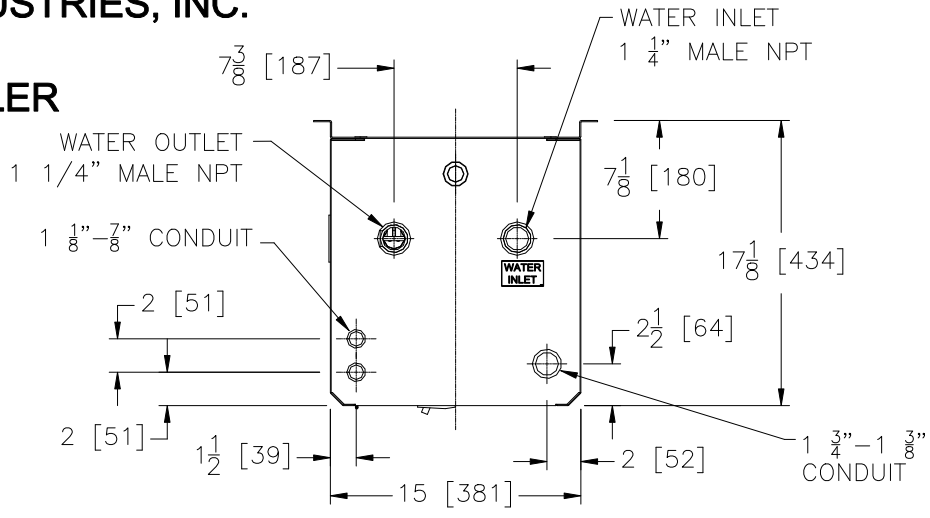


**ELECTRO INDUSTRIES, INC.**  
**TS-STANDARD**  
**ELECTRO-BOILER**  
**(EB-\*/EB-W\*)**



NOTES:  
 1. DIMENSIONS SHOWN IN INCHES & [MM].

CLEARANCES		
	MINIMUM CLEARANCE COMBUSTIBLE SURFACES	SUGGESTED MINIMUM SERVICE CLEARANCE
BACK	0 IN/ 0 MM	0 IN/ 0 MM
LEFT	1 IN/ 25 MM	12 IN/ 305 MM
RIGHT	1 IN/ 25 MM	6 IN/ 152 MM
FRONT	1 IN/ 25 MM	24 IN/ 610 MM
TOP	1 IN/ 25 MM	24 IN/ 610 MM
BOTTOM	REQUIRED CLEARANCE - 18 IN/ 457 MM	

Rev.A 4-3-13: Released to ARCAT.com

PROPRIETARY AND CONFIDENTIAL NOTE: THE INFORMATION CONTAINED IN THIS DRAWING IS THE SOLE PROPERTY OF ELECTRO INDUSTRIES INC. ANY REPRODUCTION IN PART OR AS A WHOLE WITHOUT THE WRITTEN PERMISSION OF ELECTRO INDUSTRIES INC. IS PROHIBITED.		DESCRIPTION TS-STANDARD ELECTRO-BOILER 13.5kW-27kW 208V-600V (EB-*/EB-W*) ARCAT CAD DETAILS	ELECTRO INDUSTRIES, INC. MONTICELLO, MN 55362	SHEET 1/1	SCALE NTS	PART/MODEL NUMBER EB-*/EB-W*
DRAWN BAS	CHECKED	APPROVED	DATE 04-3-13	REV/STATUS L	DOCUMENT NUMBER BA502	