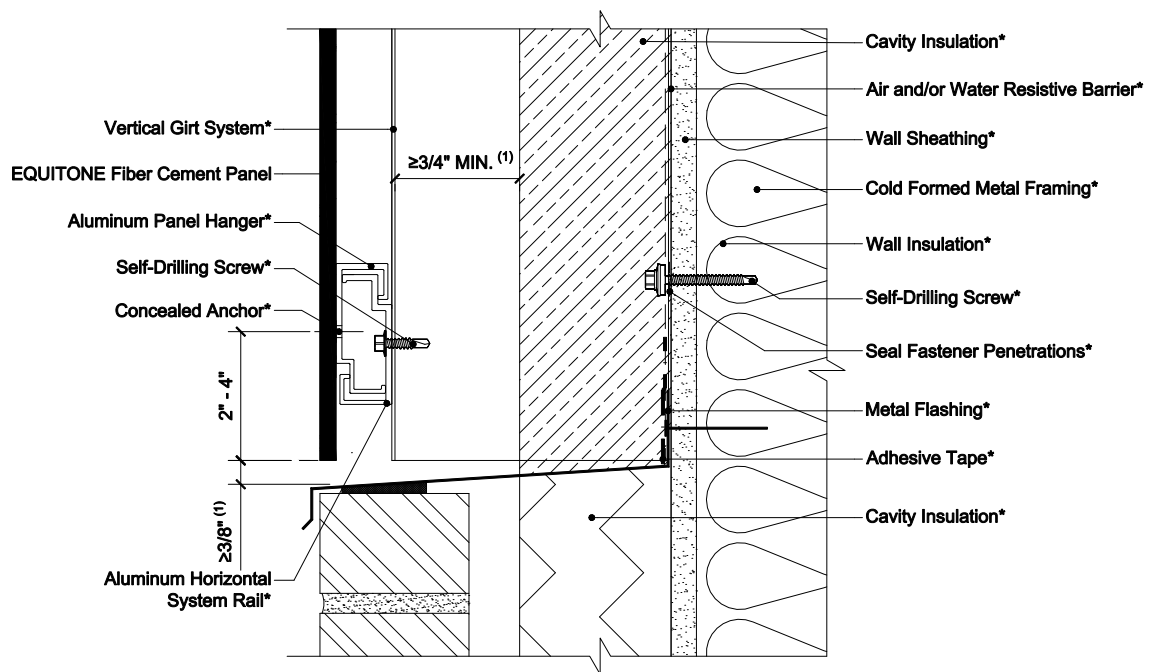


EQUITONE CONCEALED FASTENER USING VERTICAL GIRT SYSTEMS ON STEEL STUD CONSTRUCTION



NOTES:

1. Inlet/Outlet, air cavity, and closure perforation sizing should be modified, from those expressed herein, depending upon building height and/or local legislation. Visit the Planning and Application Guide - Face Fixing to Metal for additional information.
2. (*) symbol represents materials not supplied by EQUITONE.

DETAIL #: EQ-CF-VG-SS-BOM
 RELEASE: 202412
 REGION: NORTH AMERICA
 WWW.EQUITONE.COM

BASE DETAIL - JUNCTION
 WITH OTHER FACADE
 MATERIAL DETAIL