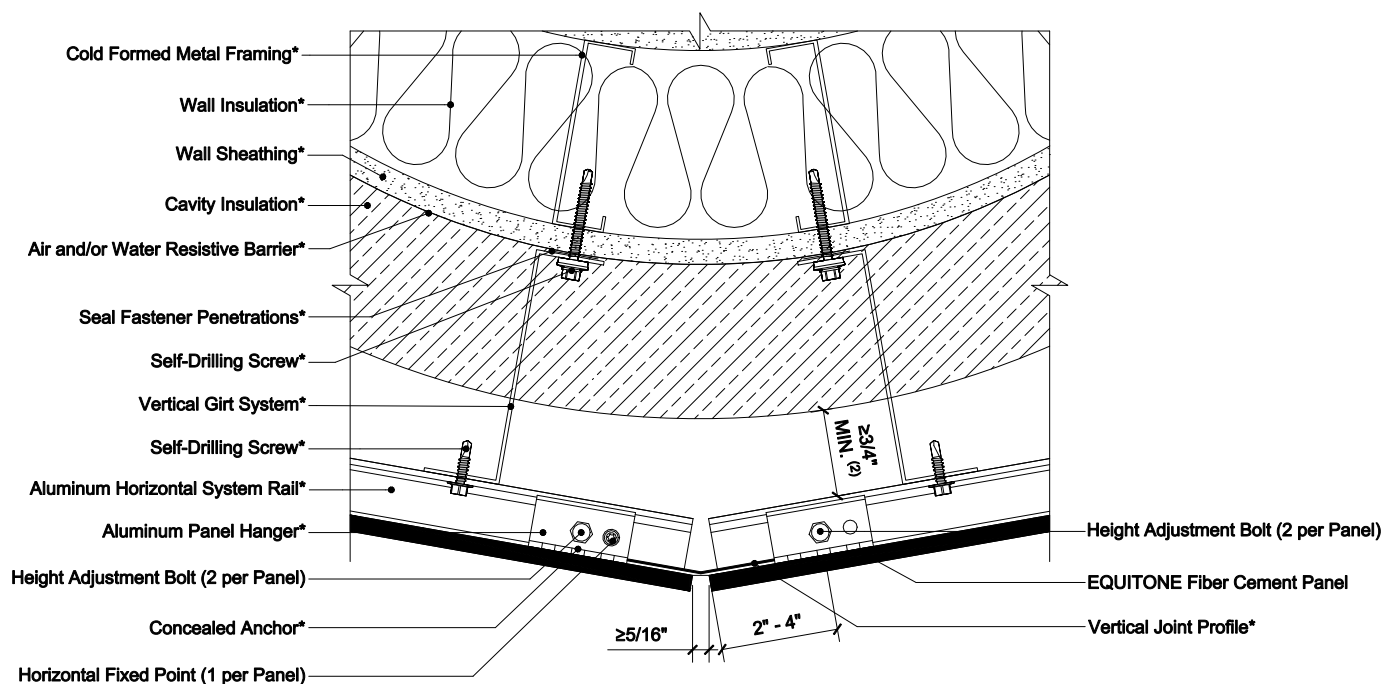


# EQUITONE CONCEALED FASTENER USING VERTICAL GIRT SYSTEMS ON STEEL STUD CONSTRUCTION



Segmented Facade - Radius

**NOTES:**

1. Flashing used to close the joints may not be thicker than 1/32 in (23 gauge), including the thickness of any fastener heads.
2. Inlet/Outlet, air cavity, and closure perforation sizing should be modified, from those expressed herein, depending upon building height and/or local legislation. Visit the Planning and Application Guide - Face Fixing to Metal for additional information.
3. (\*) symbol represents materials not supplied by EQUITONE.

DETAIL #: EQ-CF-VG-SS-CURVE

RELEASE: 202412

REGION: NORTH AMERICA

WWW.EQUITONE.COM

**CURVED FACADE  
DETAILS**