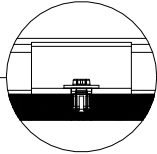


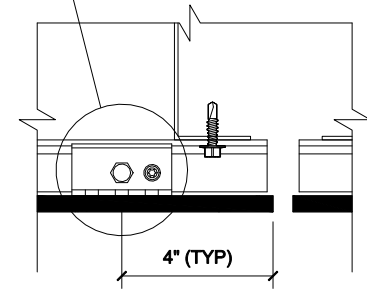
EQUITONE CONCEALED FASTENER USING VERTICAL GIRT SYSTEMS ON STEEL STUD CONSTRUCTION

Concealed Anchor Edge Distance Requirements

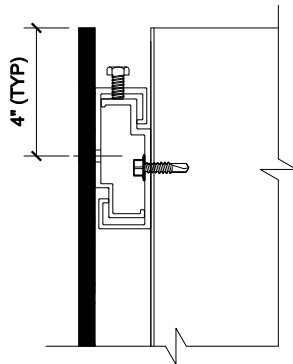
Kell



Position of Concealed Anchor
in the Panel Hanger

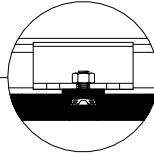


Vertical Joint Edge Distance

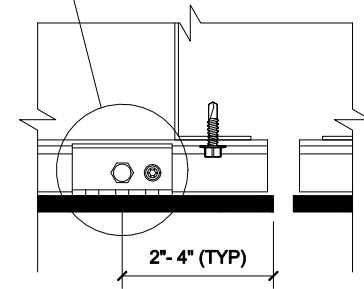


Horizontal Joint Edge Distance

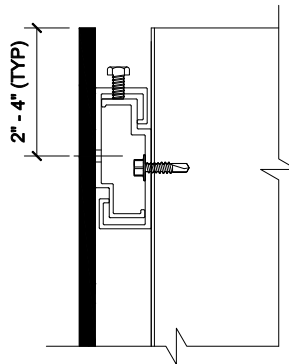
Fischer



Position of Concealed Anchor
in the Panel Hanger

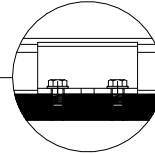


Vertical Joint Edge Distance

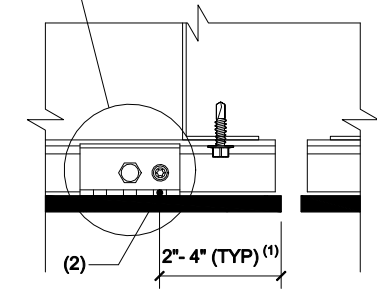


Horizontal Joint Edge Distance

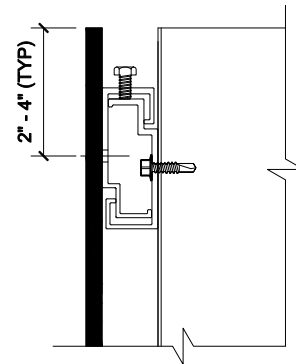
SFS



Position of Concealed Anchor
in the Panel Hanger



Vertical Joint Edge Distance



Horizontal Joint Edge Distance

NOTES:

1. Ensure measurement is taken from anchor closest to the panel edge and not from the center of the hanger.
2. Ensure dimension is to the center of this front hole and not the hole behind.

DETAIL #: EQ-CF-VG-SS-ED

RELEASE: 202412

REGION: NORTH AMERICA

WWW.EQUITONE.COM

**CONCEALED ANCHOR
EDGE DISTANCE
REQUIREMENTS**