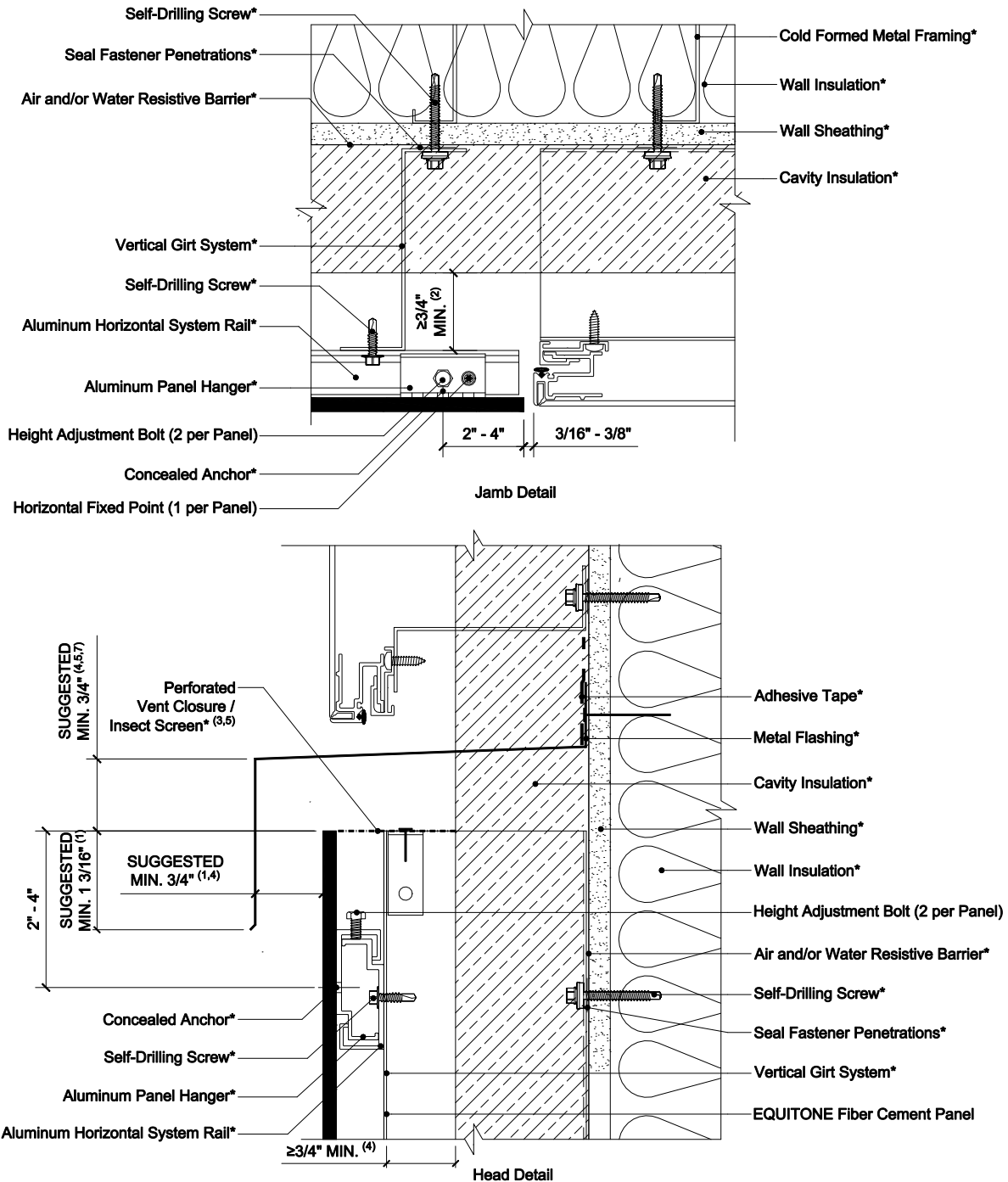


EQUITONE CONCEALED FASTENER USING VERTICAL GIRT SYSTEMS ON STEEL STUD CONSTRUCTION



NOTES:

1. A smaller overlap or offset is possible, but it may increase the risk of water marks and panel staining caused by runoff. Smaller capping is also more prone to wind driven rain entering the cavity. At minimum, EQUITONE's ventilation guidelines must be followed.
2. The facade panel should preferably overhang more than 3/8 in below the ventilation profile to create a drip edge.
3. All closures, trims, screens, etc. should be held off the back of the panel by at least 1/16 inch.
4. Inlet/Outlet, air cavity, and closure perforation sizing should be modified, from those expressed herein, depending upon building height and/or local legislation. Visit the Planning and Application Guide - Face Fixing to Metal for additional information.
5. When the inlet/outlet is wider than 3/4 inch continuous, a perforated closure is recommended to prevent debris build up. The perforation pattern should allow the same volume of air to pass through as the specified continuous open joint size specified in EQUITONE guidelines.
6. Where a perforated closure is not obstructing the inlet/outlet, the opening should be a minimum of 3/8 inch continuous.
7. Ensure there is enough room to engage the panel clips over the concealed rail system.
8. (*) symbol represents materials not supplied by EQUITONE.

DETAIL #: EQ-CF-VG-SS-OM
 RELEASE: 202412
 REGION: NORTH AMERICA
 WWW.EQUITONE.COM

JUNCTION WITH
 OTHER FACADE
 MATERIAL DETAILS