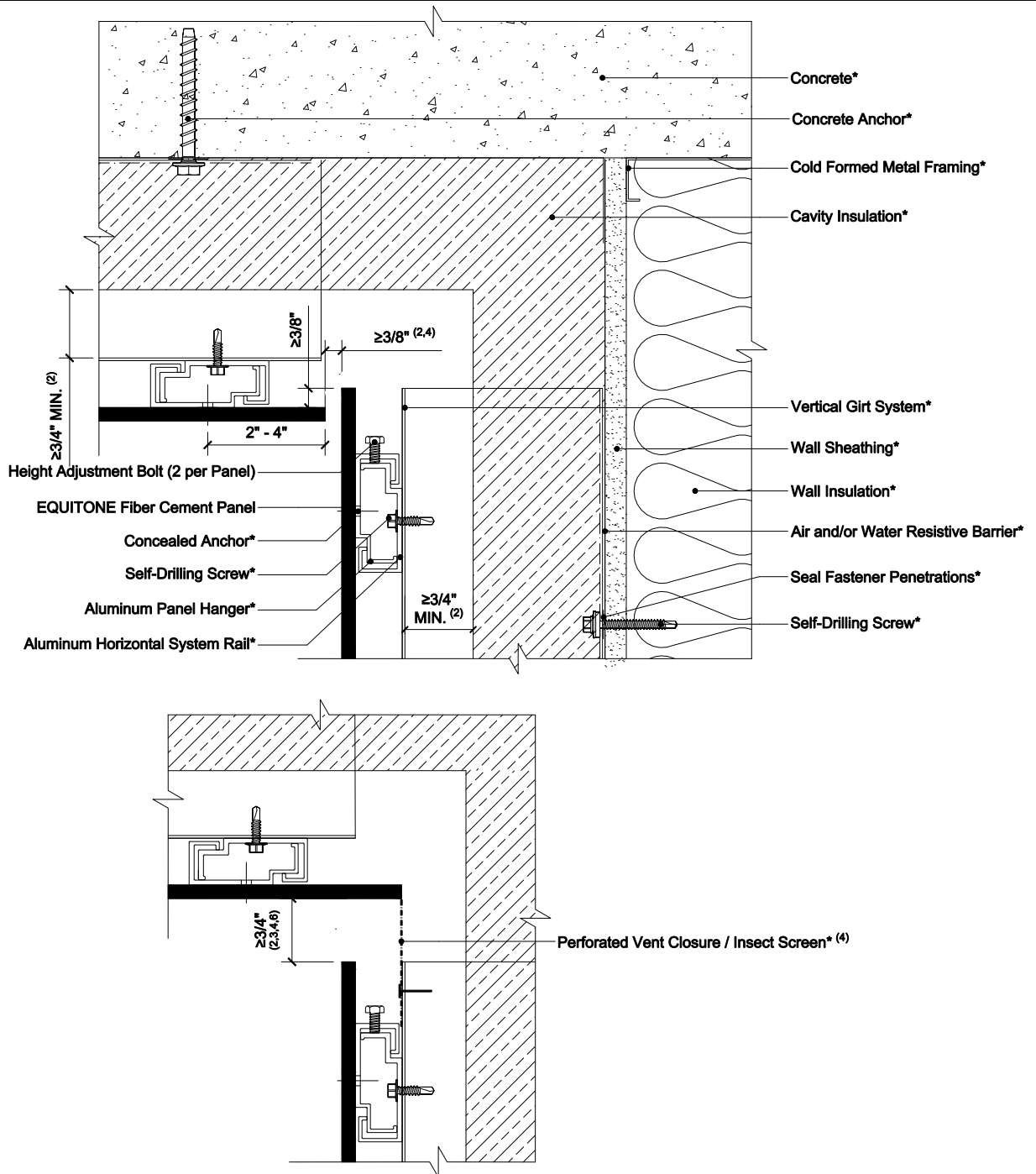


EQUITONE CONCEALED FASTENER USING VERTICAL GIRT SYSTEMS ON STEEL STUD CONSTRUCTION



NOTES:

1. For soffit conditions, rivet spacing should be limited to 16 inch on center and should be confirmed through project engineering.
2. All closures, trims, screens, etc. should be held back off of the back of the panel by at least 1/16 inch.
3. Inlet/outlet, air cavity, and closure perforation sizing will vary, from those expressed herein, depending upon the distance between inlet/outlet or local legislation. Visit the Planning and Application Guide - Face Fixing to Metal for additional information.
4. When the inlet/outlet is wider than 3/4 inch continuous, a perforated closure is recommended to prevent debris build up. The perforation pattern should allow the same volume of air to pass through as the specified continuous open joint size specified in EQUITONE guidelines.
5. Where a perforated closure is not obstructing the inlet/outlet, the opening should be a minimum of 3/8 inch continuous.
6. Ensure there is enough room to engage the panel clips over the concealed rail system. Suggested 3/4\" minimum.
7. (*) symbol represents materials not supplied by EQUITONE.

DETAIL #: EQ-CF-VG-SS-SCI
RELEASE: 202412
REGION: NORTH AMERICA
WWW.EQUITONE.COM

SOFFIT / CEILING
WALL JUNCTION -
INSIDE EDGE