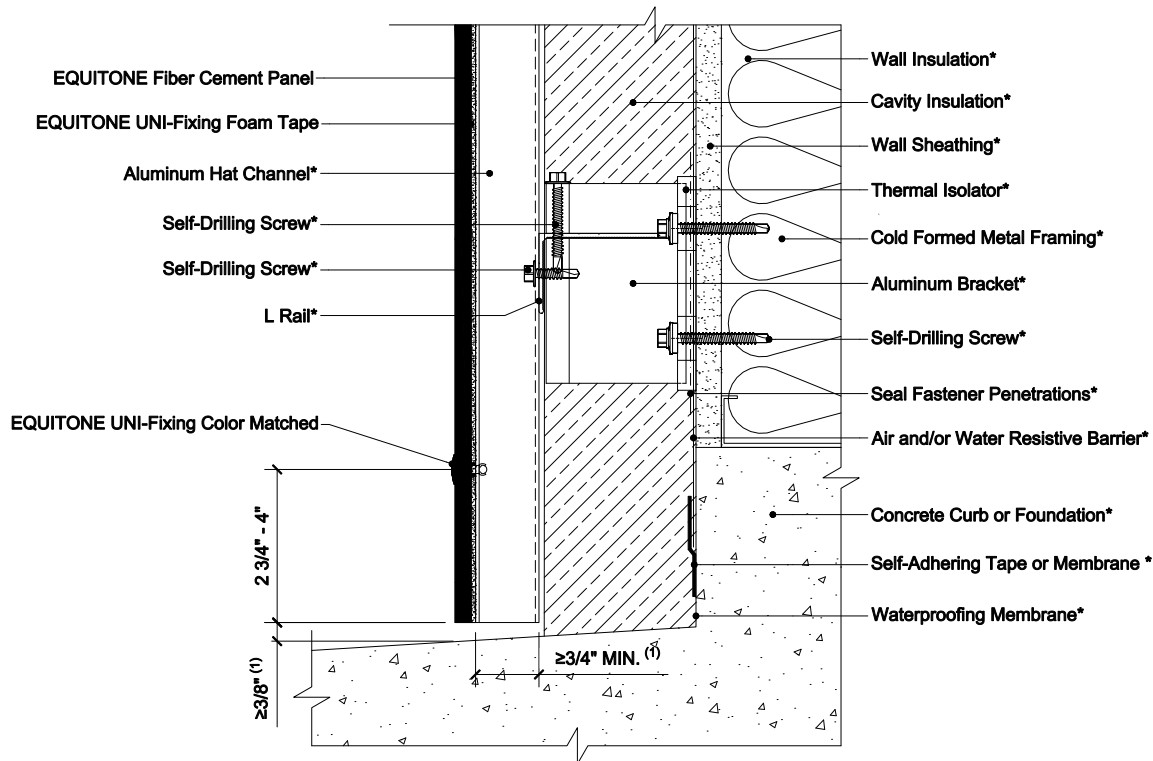


# EQUITONE EXPOSED FASTENER USING ALUMINUM CLIP AND RAIL SYSTEMS ON STEEL STUD CONSTRUCTION



## NOTES:

1. Inlet/Outlet, air cavity, and closure perforation sizing should be modified, from those expressed herein, depending upon building height and/or local legislation. Visit the Planning and Application Guide - Face Fixing to Metal for additional information.
2. (\*) symbol represents materials not supplied by EQUITONE.

DETAIL #: EQ-EF-ALCR-SS-BB

RELEASE: 202412

REGION: NORTH AMERICA

WWW.EQUITONE.COM

BASE DETAIL -  
BALCONY