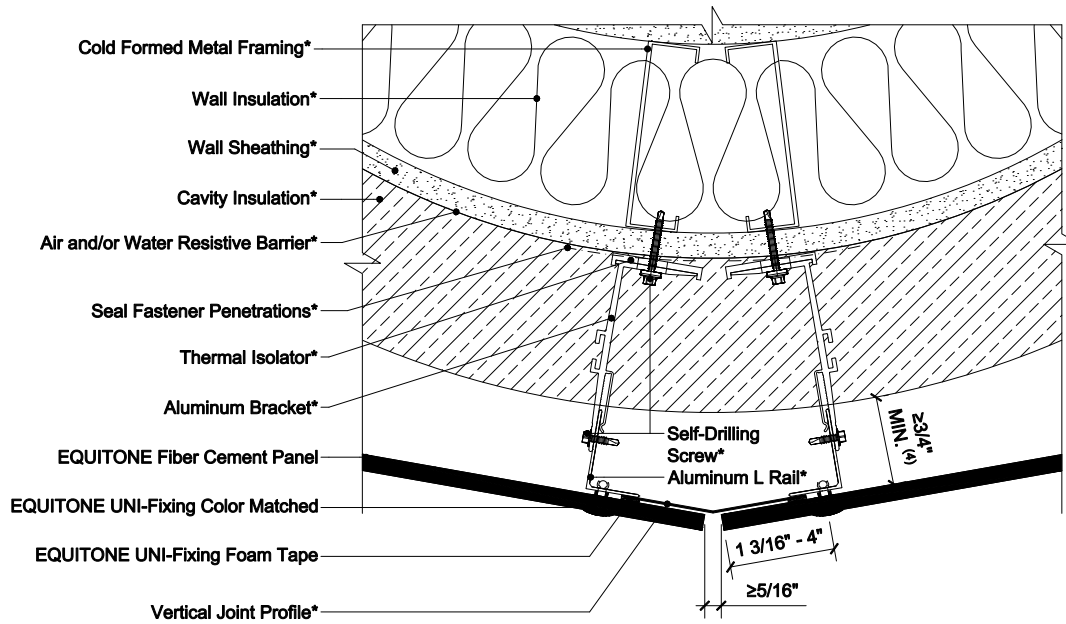
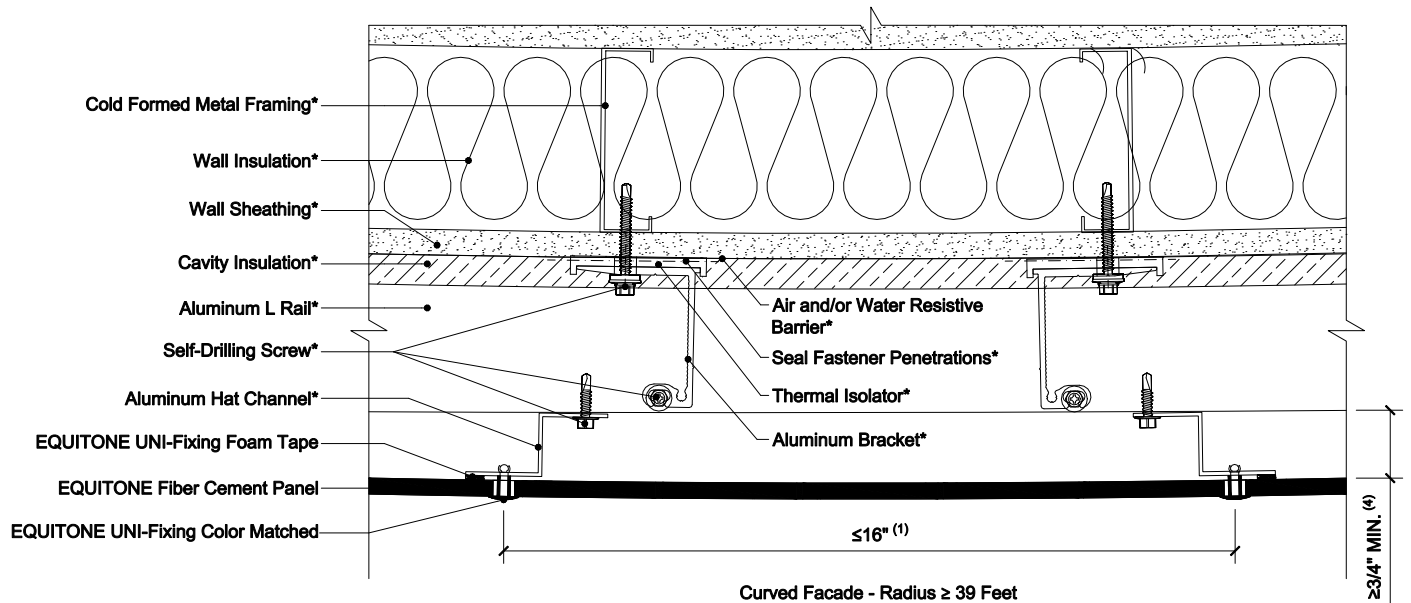


EQUITONE EXPOSED FASTENER USING ALUMINUM CLIP AND RAIL SYSTEMS ON STEEL STUD CONSTRUCTION



Segmented Facade - Radius < 39 Feet



Curved Facade - Radius ≥ 39 Feet

NOTES:

1. The minimum an EQUITONE panel can be curved is 39ft with framing centers reduced to a maximum of 16 inch. Confirm with subframe supplier if the intended system can achieve design radius.
2. For smaller radii the facade should be executed as segmented facade.
3. Flashing used to close the joints may not be thicker as 1/32 in (23 gauge), including the thickness of any fastener heads.
4. Inlet/Outlet, air cavity, and closure perforation sizing should be modified, from those expressed herein, depending upon building height and/or local legislation. Visit the Planning and Application Guide - Face Fixing to Metal for additional information.
5. (*) symbol represents materials not supplied by EQUITONE.

DETAIL #: EQ-EF-ALCR-SS-CURVE
RELEASE: 202412
REGION: NORTH AMERICA
WWW.EQUITONE.COM

CURVED FACADE DETAILS