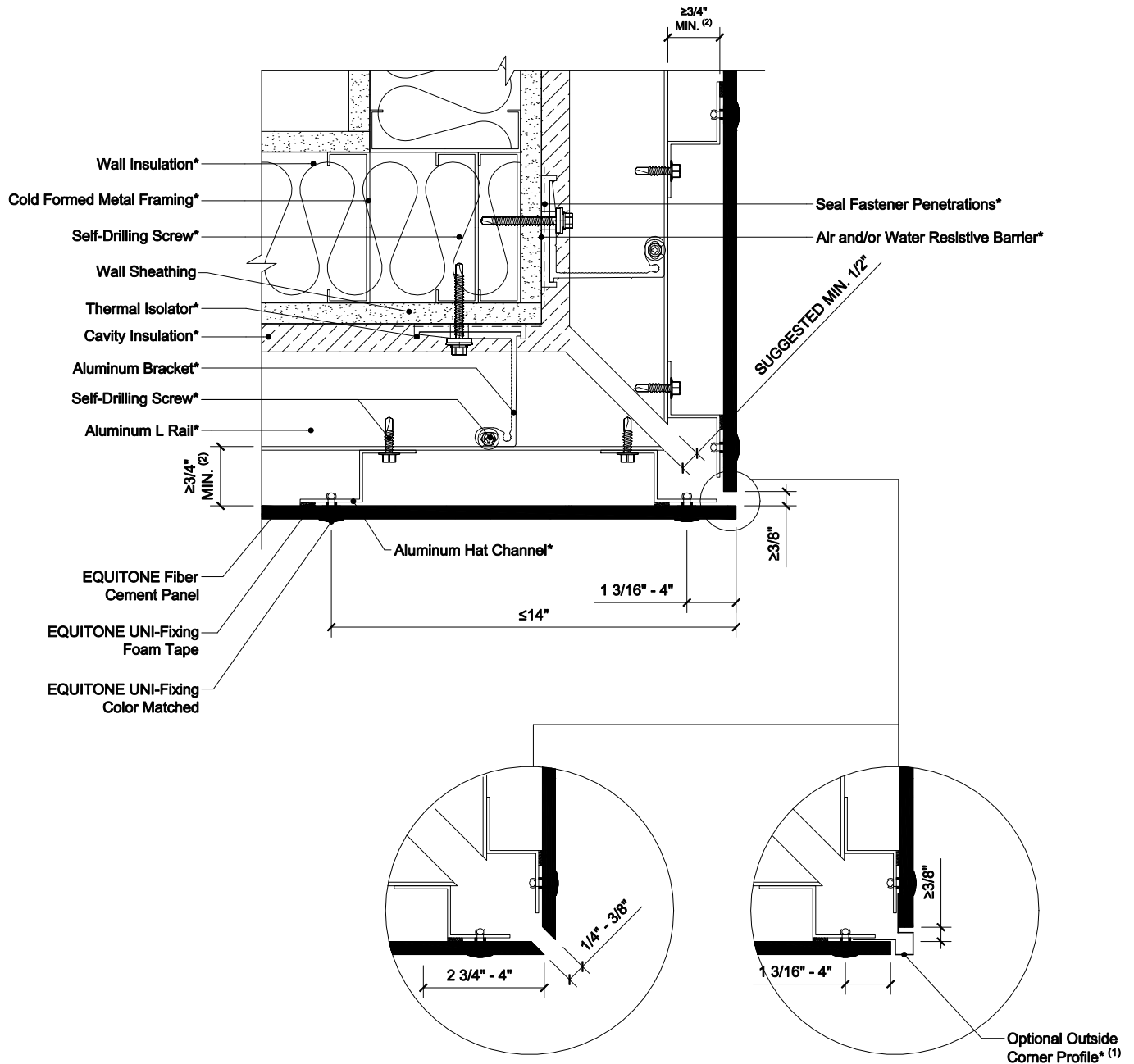


EQUITONE EXPOSED FASTENER USING ALUMINUM CLIP AND RAIL SYSTEMS ON STEEL STUD CONSTRUCTION



NOTES:

1. Flashing used to close the joints may not be thicker as 1/32 in (23 gauge), including the thickness of any fastener heads.
2. Inlet/outlet, air cavity, and closure perforation sizing will vary, from those expressed herein, depending upon the distance between inlet/outlet or local legislation. Visit the Planning and Application Guide - Face Fixing to Metal for additional information.
3. (*) symbol represents materials not supplied by EQUITONE.

DETAIL #: EQ-EF-ALCR-SS-OC

RELEASE: 202412

REGION: NORTH AMERICA

WWW.EQUITONE.COM

OUTSIDE CORNER
DETAIL