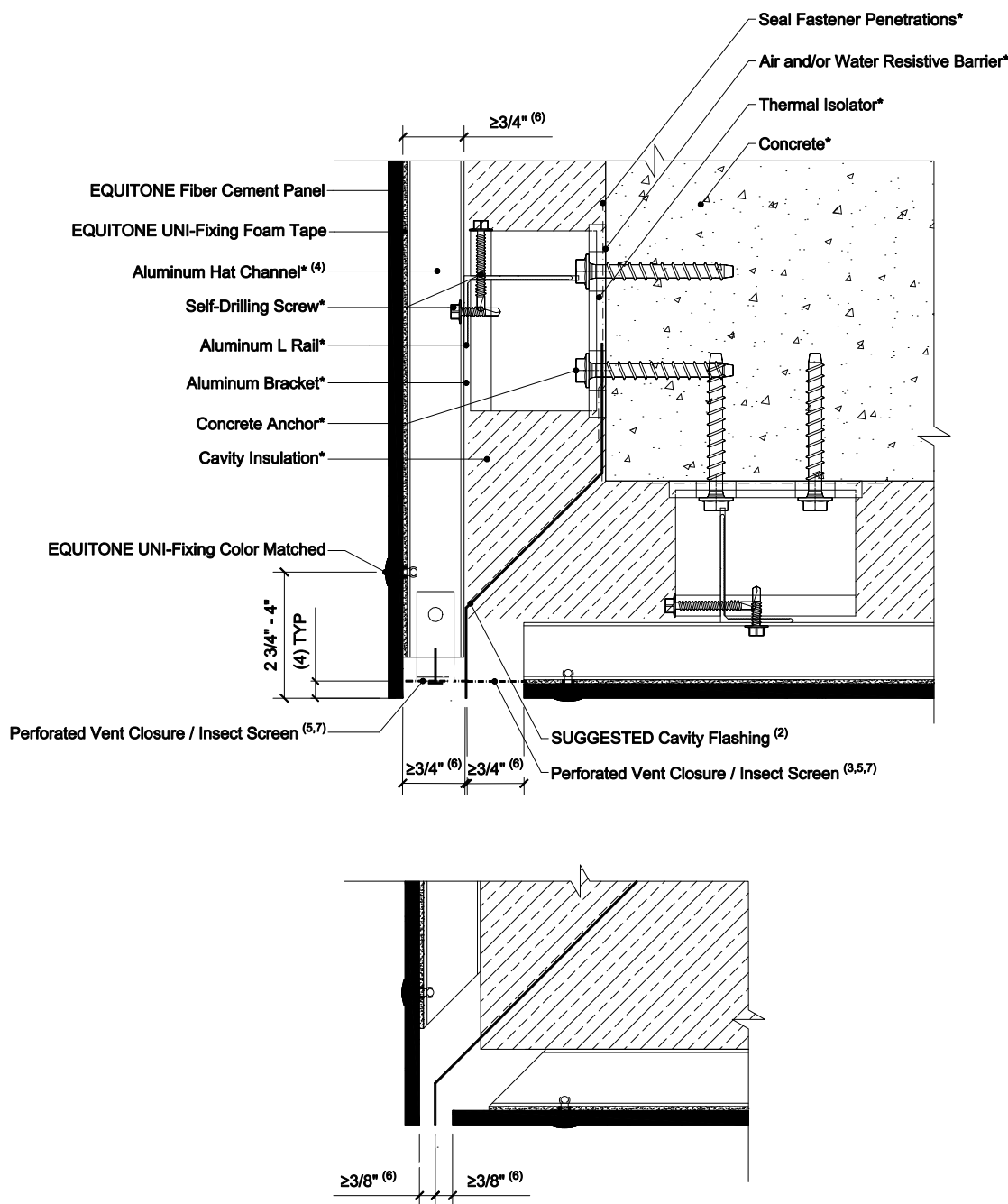


EQUITONE EXPOSED FASTENER USING ALUMINUM CLIP AND RAIL SYSTEMS ON STEEL STUD CONSTRUCTION



NOTES:

1. For soffit conditions, rivet spacing should be limited to 16 inch on center and should be confirmed through project engineering.
2. The following could also be detailed without a through wall flashing, but it may increase the risk of water marks and efflorescence on the face of the soffit panel material. At minimum, EQUITONE's ventilation guidelines must be followed.
3. Flashing used to close the joints may not be thicker than 1/32 inch (23 gauge), including the thickness of any fastener heads.
4. The facade panel should preferably overhang more than 3/8 inch below ventilation profile to create a drip edge.
5. All closures, trims, screens, etc. should be held off the back of the panel by at least 1/16 inch.
6. Inlet/outlet, air cavity, and closure perforation sizing will vary, from those expressed herein, depending upon the distance between inlet/outlet or local legislation. Visit the Planning and Application Guide - Face Fixing to Metal for additional information.
7. When the inlet/outlet is wider than 3/4 inch continuous, a perforated closure is recommended to prevent debris build up. The perforation pattern should allow the same volume of air to pass through as the specified continuous open joint size specified in EQUITONE guidelines.
8. Where a perforated closure is not obstructing the inlet/outlet, the opening should be a minimum of 3/8 inch continuous.
9. (*) symbol represents materials not supplied by EQUITONE.

DETAIL #: EQ-EF-ALCR-SS-SCO
 RELEASE: 202412
 REGION: NORTH AMERICA
 WWW.EQUITONE.COM

SOFFIT / CEILING
 WALL JUNCTION -
 OUTSIDE EDGE