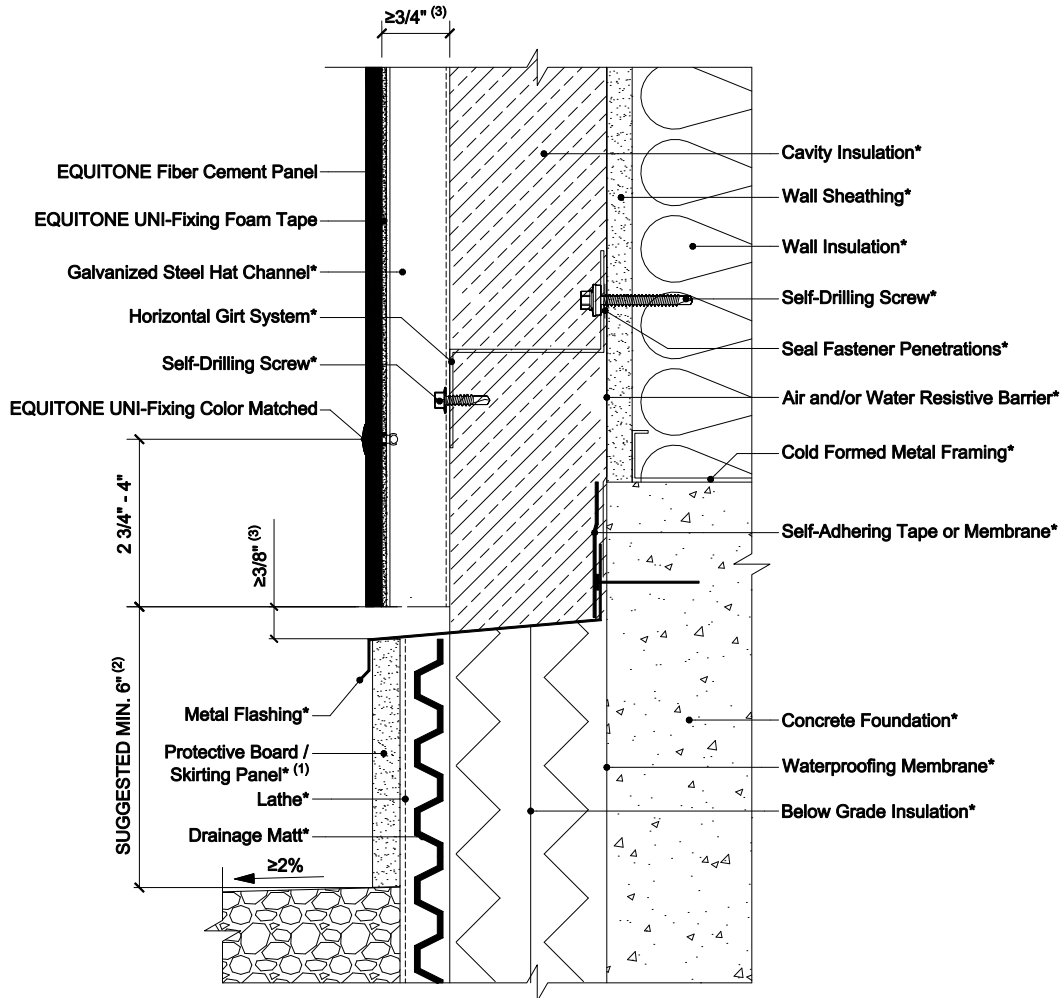


# EQUITONE EXPOSED FASTENER USING HORIZONTAL GIRT SYSTEMS ON STEEL STUD CONSTRUCTION



## NOTES:

1. The skirting board could be concrete, natural stone, render, metal flashing, etc.
2. A smaller ground clearance is possible, but it may increase the risk of water marks and panel staining caused by splash back.
3. Inlet/Outlet, air cavity, and closure perforation sizing should be modified, from those expressed herein, depending upon building height and/or local legislation. Visit the Planning and Application Guide - Face Fixing to Metal for additional information.
4. (\*) symbol represents materials not supplied by EQUITONE.

DETAIL #: EQ-EF-HG-SS-BGL

RELEASE: 202412

REGION: NORTH AMERICA

WWW.EQUITONE.COM

BASE DETAIL -  
GROUND LEVEL