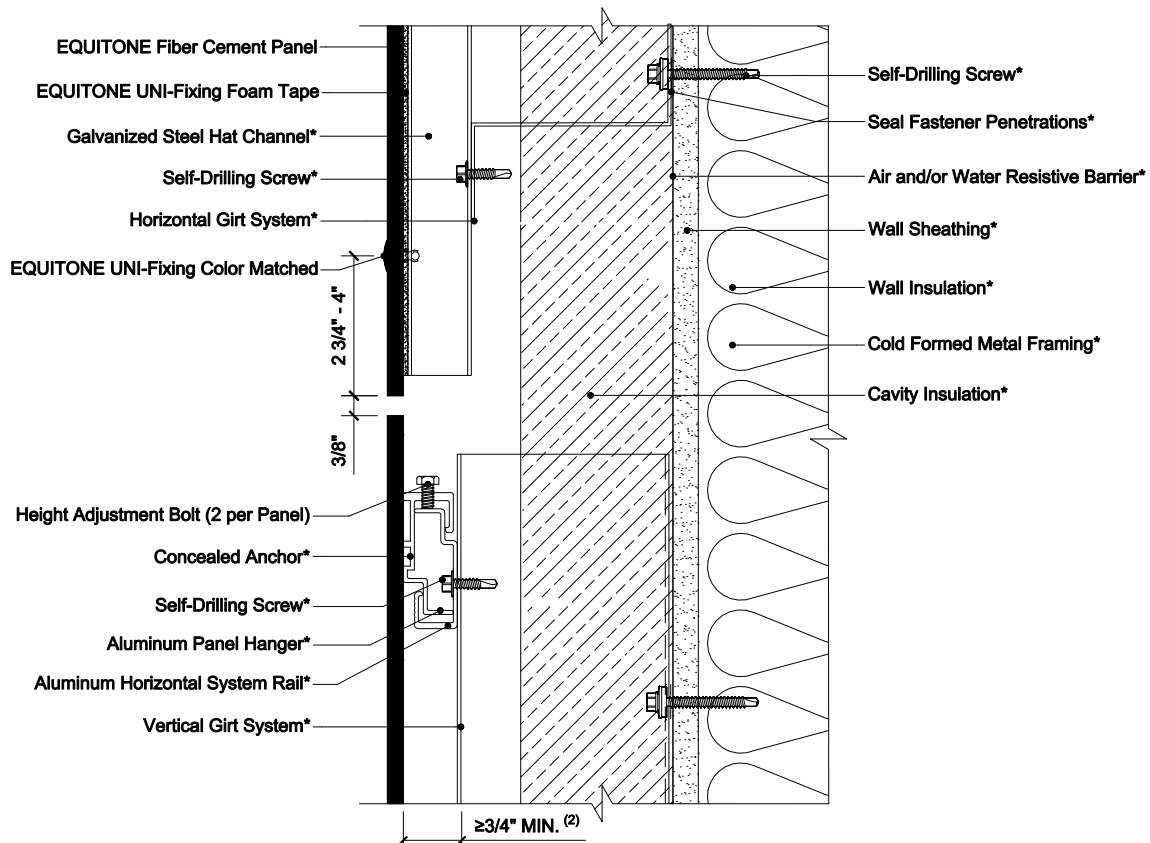


# EQUITONE EXPOSED FASTENER USING HORIZONTAL GIRT SYSTEMS ON STEEL STUD CONSTRUCTION



## NOTES:

1. The ventilation path must be maintained between varying systems to allow clear vertical air flow.
2. Inlet/outlet, air cavity, and closure perforation sizing will vary, from those expressed herein, depending upon the distance between inlet/outlet or local legislation. Visit the Planning and Application Guide - Face Fixing to Metal for additional information.
3. (\*) symbol represents materials not supplied by EQUITONE.

DETAIL #: EQ-EF-HG-SS-FJ

RELEASE: 202412

REGION: NORTH AMERICA

WWW.EQUITONE.COM

**EXPOSED FASTENER -  
CONCEALED FASTENER  
JUNCTION**