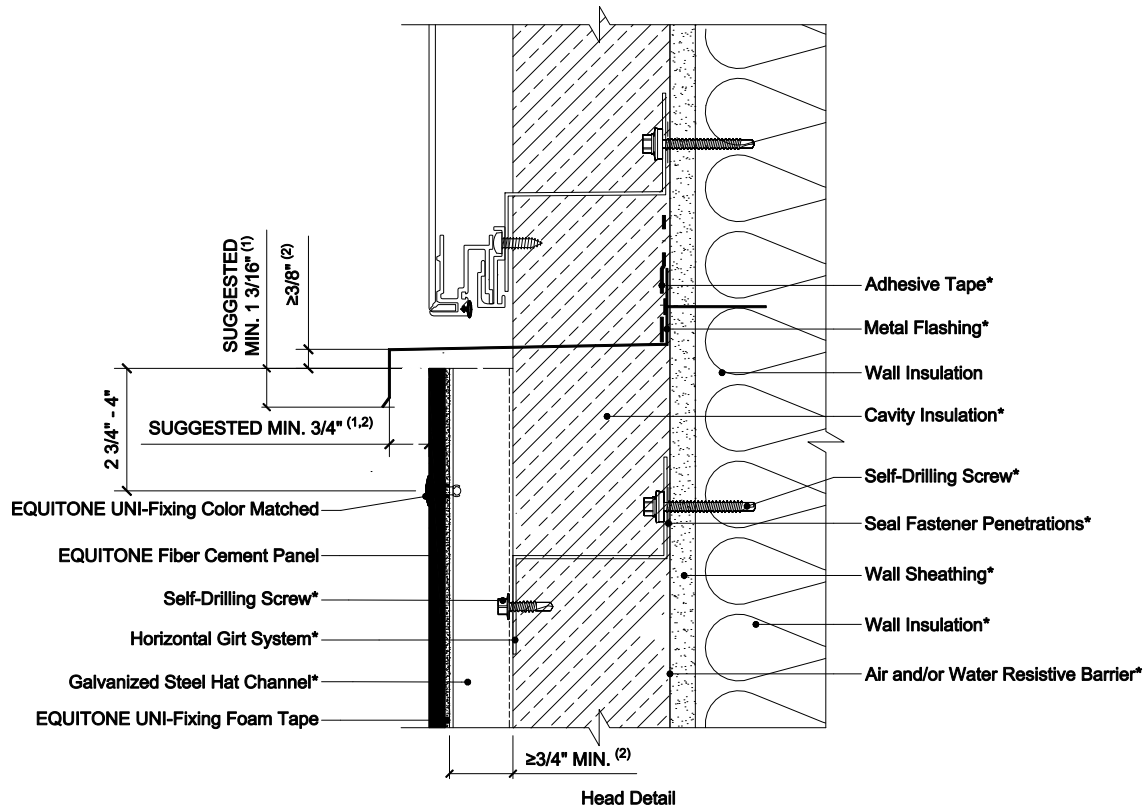
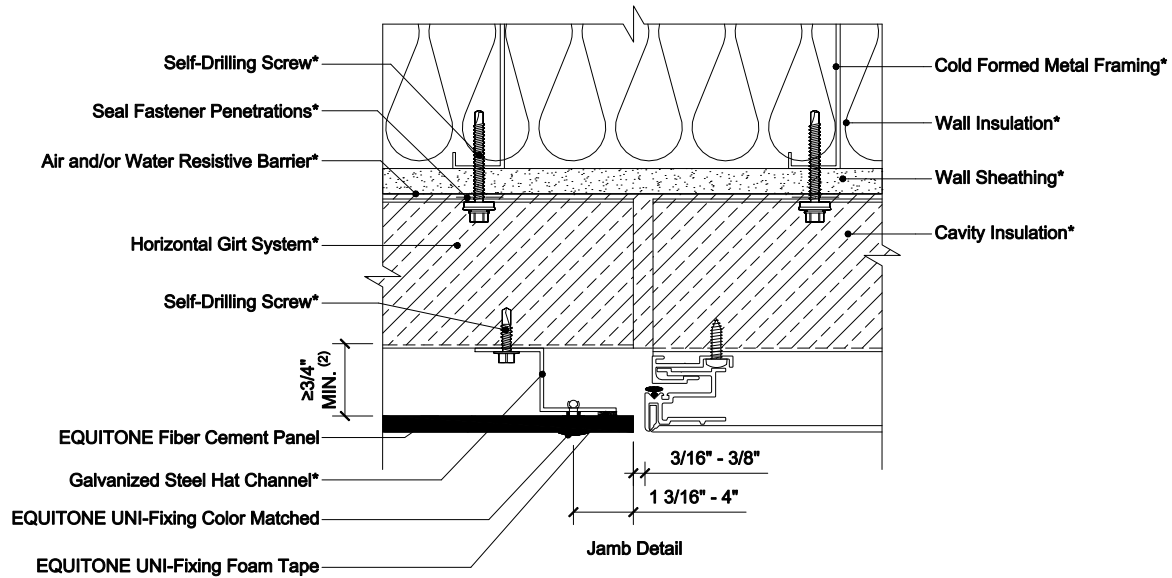


EQUITONE EXPOSED FASTENER USING HORIZONTAL GIRT SYSTEMS ON STEEL STUD CONSTRUCTION



NOTES:

1. A smaller overlap or offset is possible, but it may increase the risk of water marks and panel staining caused by runoff. Smaller capping is also more prone to wind driven rain entering the cavity. At minimum, EQUITONE's ventilation guidelines must be followed.
2. Inlet/Outlet, air cavity, and closure perforation sizing should be modified, from those expressed herein, depending upon building height and/or local legislation. Visit the Planning and Application Guide - Face Fixing to Metal for additional information.
3. (*) symbol represents materials not supplied by EQUITONE.

DETAIL #: EQ-EF-HG-SS-OM
RELEASE: 202412
REGION: NORTH AMERICA
WWW.EQUITONE.COM

JUNCTION WITH
OTHER FACADE
MATERIAL DETAILS