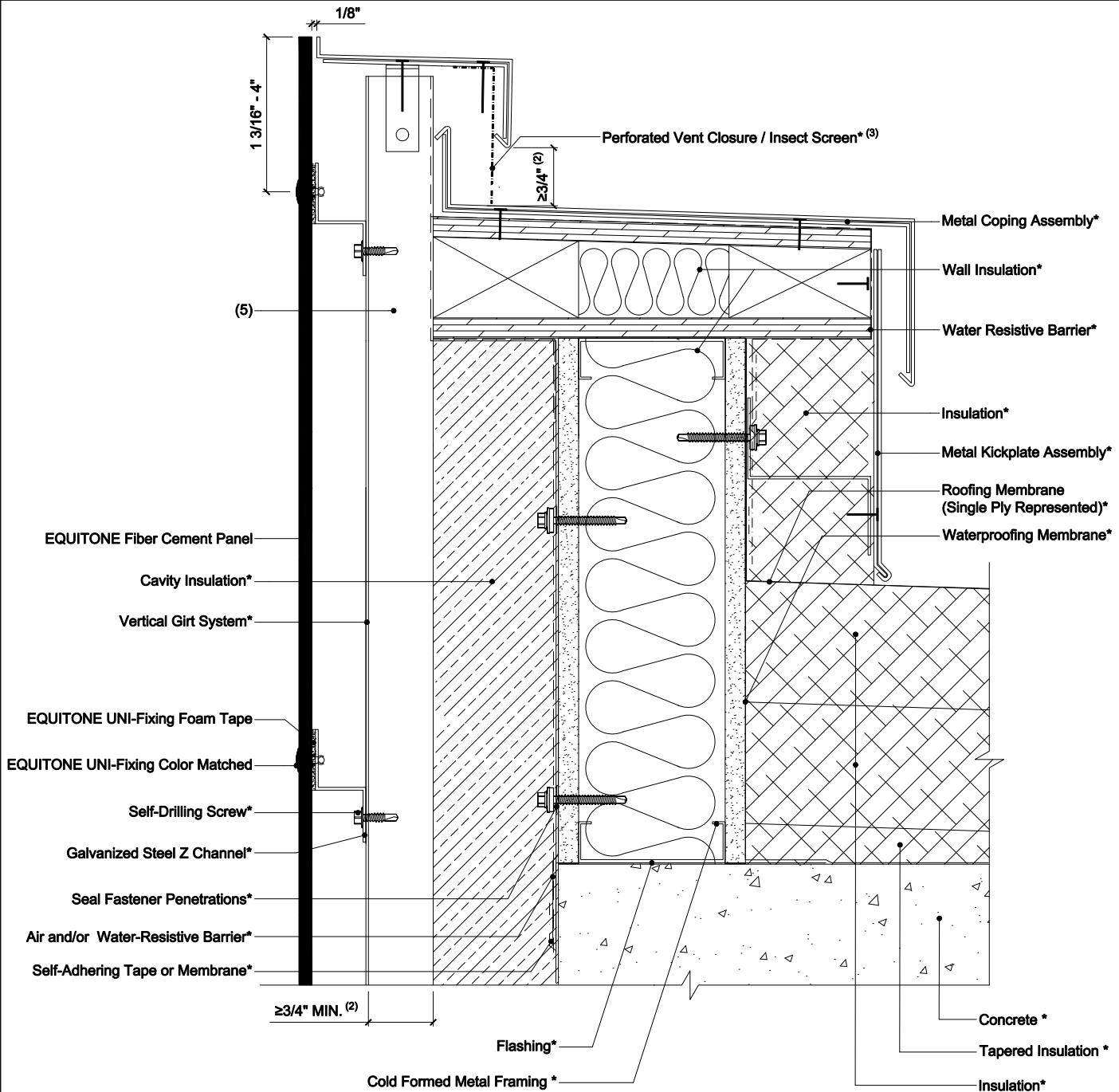


EQUITONE EXPOSED FASTENER USING VERTICAL GIRT SYSTEMS ON STEEL STUD CONSTRUCTION



NOTES:

1. The following transition from roof to parapet is valid for parapets under 24" in height. Otherwise see detail EQ-EF-VG-SS-BFR.
2. Inlet/outlet, air cavity, and closure perforation sizing will vary, from those expressed herein, depending upon the distance between inlet/outlet or local legislation. Visit the Planning and Application Guide - Face Fixing to Metal for additional information.
3. When the inlet/outlet is wider than 3/4 inch continuous, a perforated closure is recommended to prevent debris build up. The perforation pattern should allow the same volume of air to pass through as the specified continuous open joint size specified in EQUITONE guidelines.
4. Where a perforated closure is not obstructing the inlet/outlet, the opening should be a minimum of 3/8 inch continuous.
5. Reduced section of the support profiles must be taken into account during static calculations.
6. (*) symbol represents materials not supplied by EQUITONE.

DETAIL #: EQ-EF-VG-SS-C2

RELEASE: 202412

REGION: NORTH AMERICA

WWW.EQUITONE.COM

COPING DETAIL -
OPTION 2