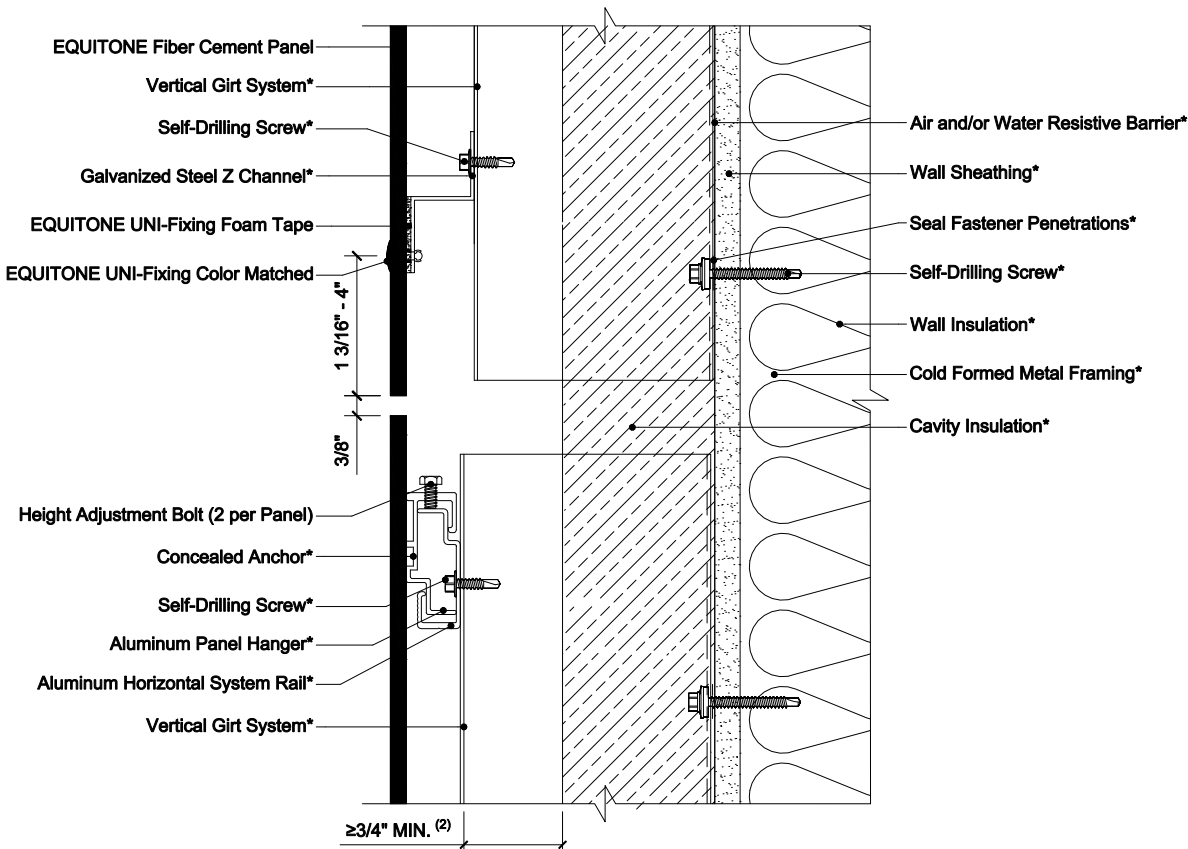


EQUITONE EXPOSED FASTENER USING VERTICAL GIRT SYSTEMS ON STEEL STUD CONSTRUCTION



- NOTES:
1. The ventilation path must be maintained between varying systems to allow clear vertical air flow.
 2. Inlet/outlet, air cavity, and closure perforation sizing will vary, from those expressed herein, depending upon the distance between inlet/outlet or local legislation. Visit the Planning and Application Guide - Face Fixing to Metal for additional information.
 3. (*) symbol represents materials not supplied by EQUITONE.

DETAIL #: EQ-EF-VG-SS-FJ
 RELEASE: 202412
 REGION: NORTH AMERICA
 WWW.EQUITONE.COM

EXPOSED FASTENER -
 CONCEALED FASTENER
 JUNCTION