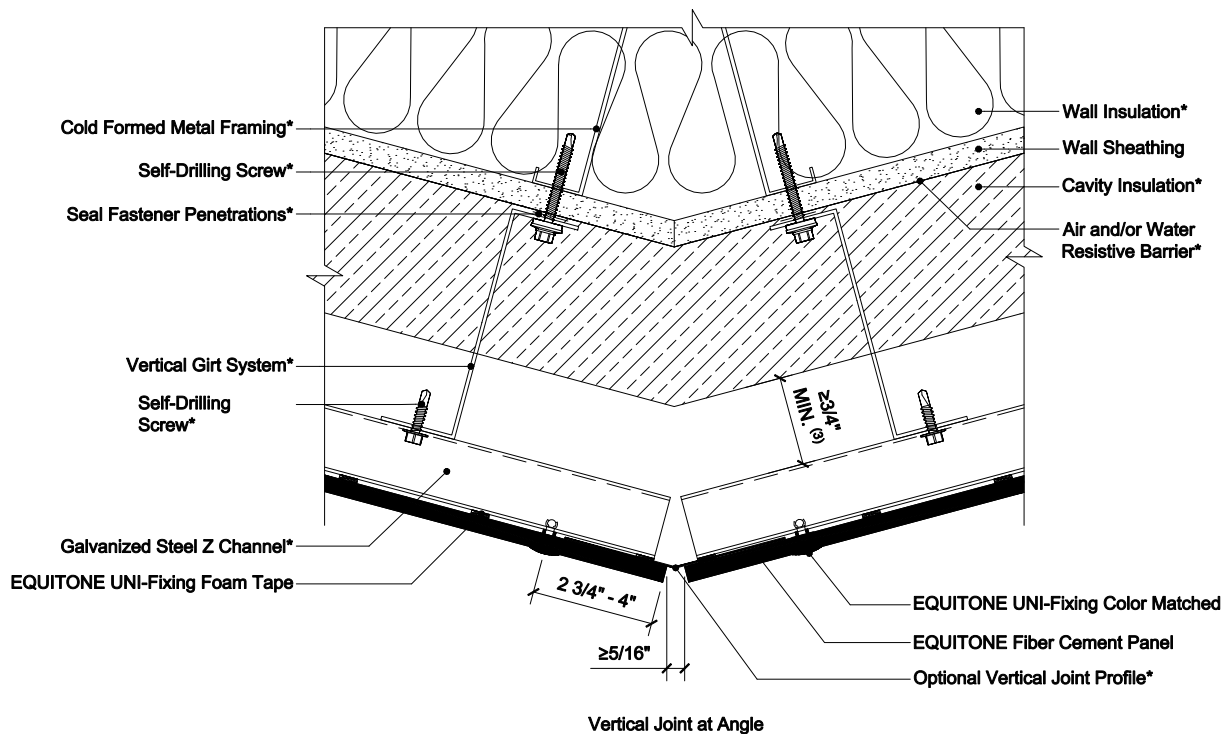
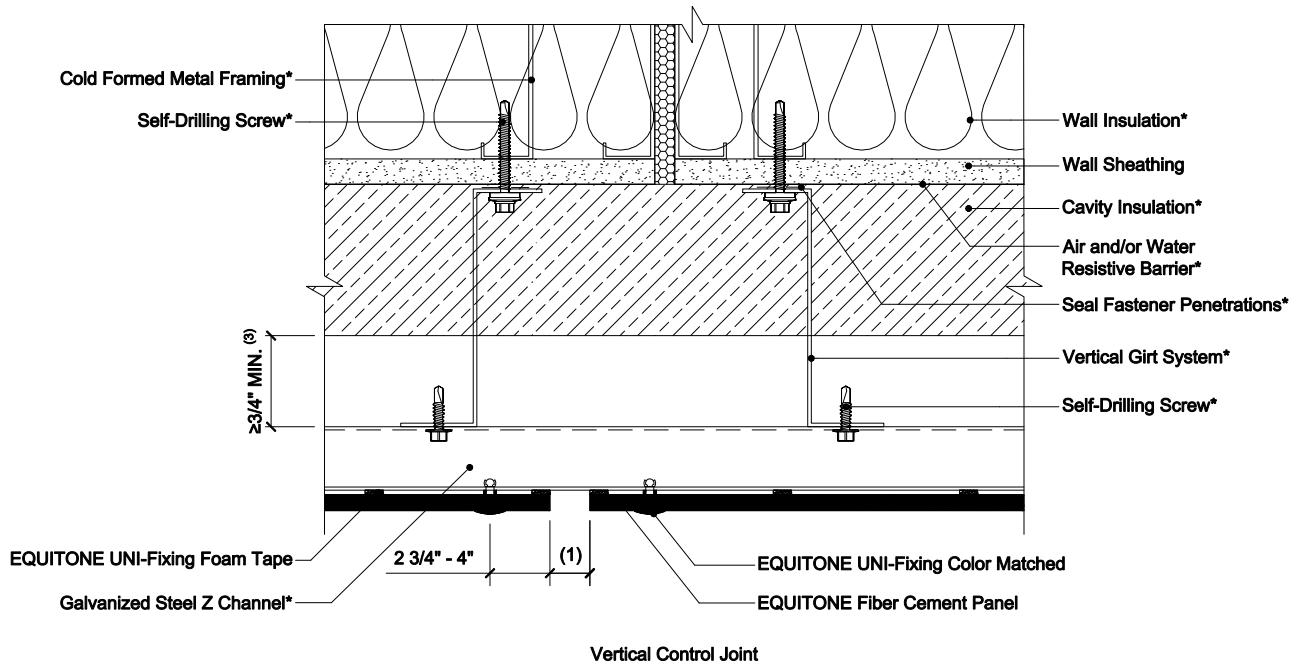


EQUITONE EXPOSED FASTENER USING VERTICAL GIRT SYSTEMS ON STEEL STUD CONSTRUCTION



NOTES:

1. The width of the facade control joint should be equal or greater than the building control joint.
2. Flashing used to close the joints may not be thicker than 1/32 in (23 gauge), including the thickness of any fastener heads.
3. Inlet/Outlet, air cavity, and closure perforation sizing should be modified, from those expressed herein, depending upon building height and/or local legislation. Visit the Planning and Application Guide - Face Fixing to Metal for additional information.
4. (*) symbol represents materials not supplied by EQUITONE.

DETAIL #: EQ-EF-VG-SS-VJ

RELEASE: 202412

REGION: NORTH AMERICA

WWW.EQUITONE.COM

**VERTICAL JOINT
DETAILS**