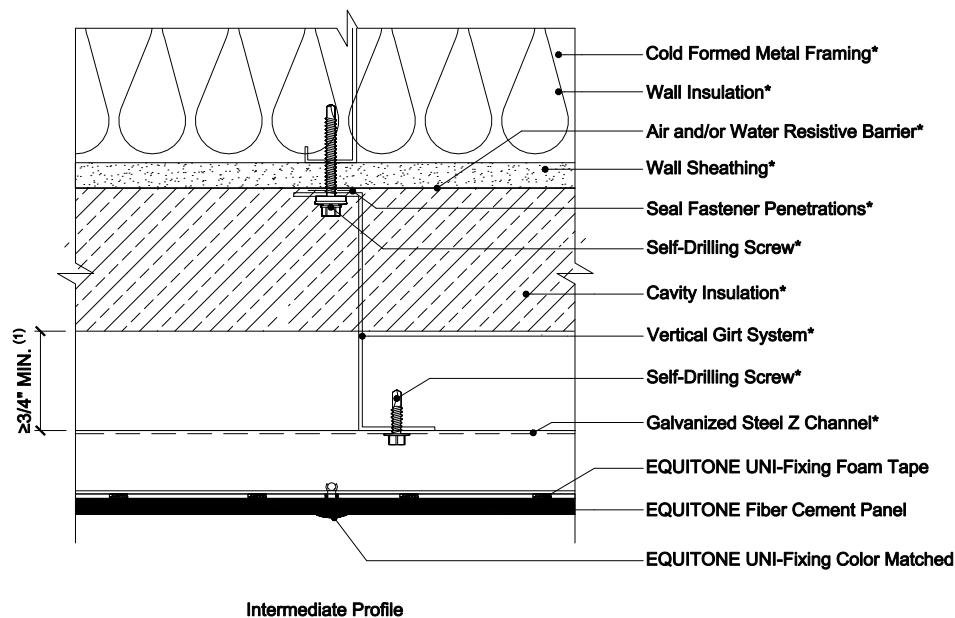
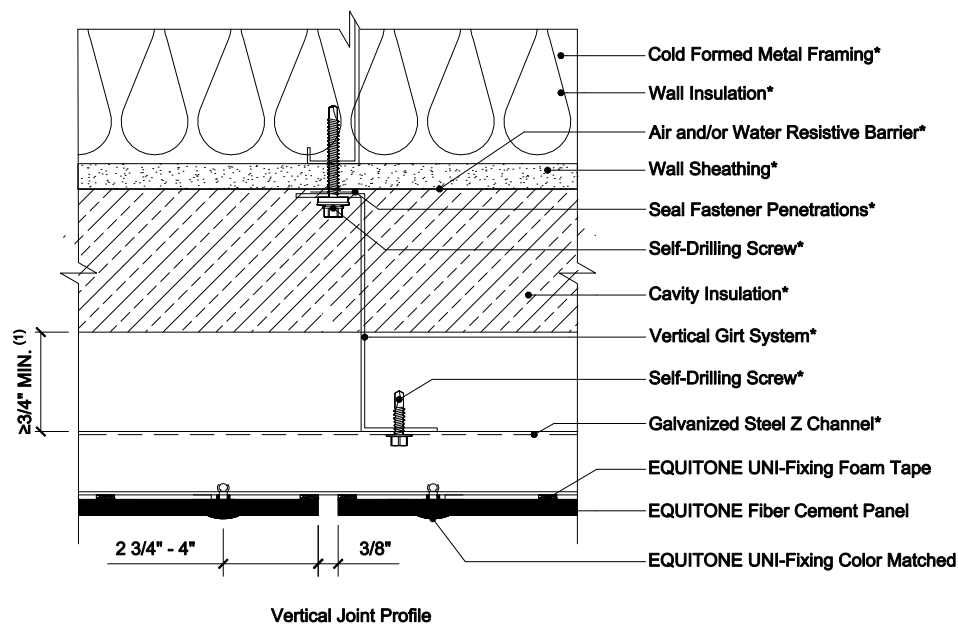


# EQUITONE EXPOSED FASTENER USING VERTICAL GIRT SYSTEMS ON STEEL STUD CONSTRUCTION



- NOTES:
1. Inlet/Outlet, air cavity, and closure perforation sizing should be modified, from those expressed herein, depending upon building height and/or local legislation. Visit the Planning and Application Guide - Face Fixing to Metal for additional information.
  2. (\*) symbol represents materials not supplied by EQUITONE.

DETAIL #: EQ-EF-VG-SS-VP

RELEASE: 202412

REGION: NORTH AMERICA

WWW.EQUITONE.COM

VERTICAL  
PROFILE DETAILS