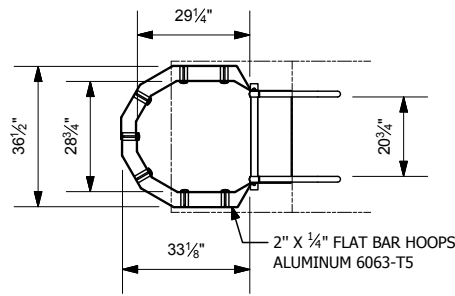


LADDER SUPPLIED IN KIT FORM. THE LADDER BASE IS DESIGNED TO BE CUT TO REQUIRED HEIGHT ON-SITE. TOP RUNG MUST BE LEVEL WITH WALKING/WORKING SURFACE OR PLATFORM.

1LD419S FLOOR MOUNT BRACKET SHOWN. VARIOUS MOUNTING OPTIONS AVAILABLE



- (A) \_\_\_\_\_  
LOWER LEVEL TO UPPER LEVEL WALKING/WORKING HEIGHT
- (B) \_\_\_\_\_  
WALL SUBSTRATE TYPE (IE: BRICK, CONCRETE BLOCK, METAL SIDING, ETC)
- (C) \_\_\_\_\_  
WALL TO CENTERLINE OF LADDER. OSHA 1910.27(C)(4) STATES THAT THE DISTANCE FROM THE CENTERLINES OF THE RUNGS TO THE NEAREST PERMANENT OBJECT SHALL NOT BE LESS THAN 7". OSHA ALSO REQUIRES A PLATFORM IF THE DISTANCE EXCEEDS 12". PLEASE STATE WIDTH OF ANY GUTTER OR OBJECT. (E.G GUTTER 9" WIDE). FIXFAST WILL ENSURE THE CORRECT BRACKET IS SUPPLIED.
- (D) \_\_\_\_\_  
FLOOR SUBSTRATE TYPE (IE, ROOF MEMBRANE, CONCRETE, METAL ROOF, ETC)

PROJECT REF: \_\_\_\_\_  
 CONTRACTOR: \_\_\_\_\_  
 APPROVED BY: \_\_\_\_\_  
 SIGN HERE: \_\_\_\_\_

AVAILABLE LADDER KITS	
CODE	HEIGHTS UP TO
RL41.195	195" (16' 3")
RL41.240	240" (20')
RL41.289	289" (24' 1")
RL41.336	336" (28')

REVISIONS				
Rev	Date	By	Rep	Remarks
1	25/05/2016	RP	WL	Released



FIXFAST USA  
 6210S Indianapolis Road  
 Whitestown IN 46075 USA  
 Tel:- +1 317 769 7710  
 Fax:- +1 317 769 5560  
 Email:- technical@fixfastusa.com  
 Web:- www.fixfastusa.com

**FIXFAST USA CONFIDENTIAL MATERIAL**  
 THIS DRAWING IS THE PROPERTY OF 'FIXFAST USA' AND SHALL NOT BE COPIED OR DISCLOSED TO A THIRD PARTY IN WHOLE OR PART WITHOUT THE CONSENT IN WRITING OF 'FIXFAST USA'.

Description  
**CAGED FIXED LADDER WITH GRAB RAILS**

Material

Product Code RL41 SERIES	FAB No.	Drawing No. 7102	Rev
-----------------------------	---------	---------------------	-----

Maximum safety. Minimum fuss.