

**FRONT ELEVATION
NTS**

1LD421280 WALL FIXING BRACKET AS STANDARD. OTHER FIXING BRACKETS AVAILABLE TO MEET SPECIFIC APPLICATIONS

1 1/4" SQ. SERRATED RUNG (TYP) ALUMINIUM 6106-T6. WELDED TO STILES

LADDER BODY CONNECTED WITH SPLICE JOIN. SEE TYP. DETAIL FOR FURTHER INFORMATION

'A' F.F.L TO TOP OF WALKING SURFACE

EQUAL RUNG SPACING AT 12" CTRS

EQUAL SPACING NOT TO EXCEED 96" O.C.

1 5/8" ROUND KNEERAIL TUBE, ALUMINIUM 6106-T6
2No. #12 X 2" S.S. SELF TAPPING SCREWS PER POST

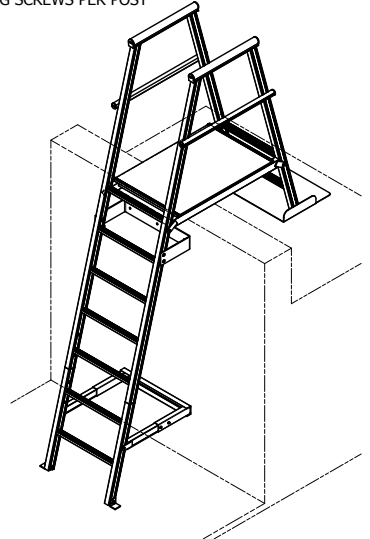
ALUMINIUM EXTRUDED STILE
GRADE 6106-T6 (2 1/4" X 1 1/2" X 1/8")

LADDER SUPPLIED IN KIT FORM. THE LADDER BASE IS DESIGNED TO BE CUT TO REQUIRED HEIGHT ON-SITE. TOP RUNG MUST BE LEVEL WITH WALKING/WORKING SURFACE OR PLATFORM.

1LD419S FLOOR MOUNT BRACKET SHOWN
VARIOUS MOUNTING OPTIONS AVAILABLE

1LD421600 ADJUSTABLE FIXING BRACKET AS STANDARD. OTHER FIXINGS BRACKETS AVAILABLE TO MEET SPECIFIC APPLICATIONS

2" ROUND HANDRAIL TUBE, ALUMINIUM 6106-T6
2No. #10 X 3/8" S.S SELF TAPPING SCREWS PER POST

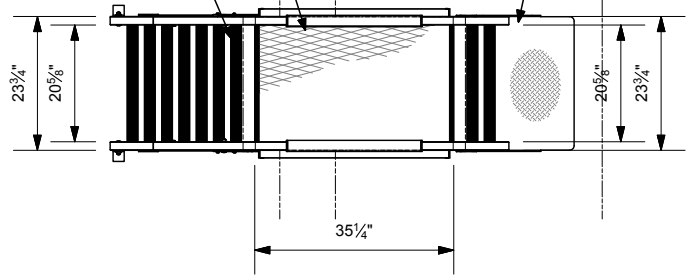


1LD419F NON-PENETRATING BASE PLATE SHOWN. OTHER MOUNT OPTIONS AVAILABLE

1/2" THK. MESH TO PLATFORM SURFACE (RIBBED FINISH) ALUMINIUM 6063-T4

1 1/4" SQ. 6061-T6 SERRATED RUNG (TYP). WELDED TO STILES

1LD419F NON-PENETRATING BASE PLATE SHOWN. OTHER MOUNT OPTIONS AVAILABLE



- (A) LOWER LEVEL TO UPPER LEVEL WALKING/WORKING HEIGHT
- (B) WALL SUBSTRATE TYPE (IE: BRICK, CONCRETE BLOCK, METAL SLIDING, ETC)
- (C) WALL TO CENTERLINE OF LADDER. OSHA 1910.27(C)(4) STATES THAT THE DISTANCE FROM THE CENTERLINES OF THE RUNGS TO THE NEAREST PERMANENT OBJECT SHALL NOT BE LESS THAN 7". OSHA ALSO REQUIRES A PLATFORM IF THE DISTANCE EXCEEDS 12"; PLEASE STATE WIDTH OF ANY GUTTER OR OBJECT. (E.G. GUTTER 9" WIDE). FIXFAST WILL ENSURE THE CORRECT BRACKET IS SUPPLIED
- (D) FLOOR SUBSTRATE TYPE (IE. ROOF MEMBRANE, CONCRETE, METAL ROOF, ETC)
- (E) INTERNAL PARAPET WALL HEIGHT
- (F) PARAPET WALL WIDTH

PROJECT REF: _____

CONTRACTOR: _____

APPROVED BY: _____

SIGN HERE: _____

AVAILABLE LADDER KITS	
CODE	HEIGHTS UP TO
RL22.53	53" (4' 5")
RL22.100	100" (8' 4")
RL22.147	147" (12' 3")

REVISIONS				
Rev	Date	By	Rep	Remarks
1	7/06/2016	RP	WL	Issued for Comment
2	30/07/2016	RP	WL	Issued for Publication

Maximum safety. Minimum fuss.

FIXFAST USA
6210S Indianapolis Road
Whitestown IN 46075 USA
Tel:- +1 317 769 7710
Fax:- +1 317 769 5560
Email:- technical@fixfastusa.com
Web:- www.fixfastusa.com

FIXFAST USA CONFIDENTIAL MATERIAL

THIS DRAWINGS IS THE PROPERTY OF 'FIXFAST USA' AND SHALL NOT BE COPIED OR DISCLOSED TO A THIRD PARTY IN WHOLE OR PART WITHOUT THE CONSENT IN WRITING OF 'FIXFAST USA'.

Description Mini fixed ladder with Parapet Platform			
Material			
Product Code RL22 SERIES	FAB No.	Drawing No. 7118	Rev 2