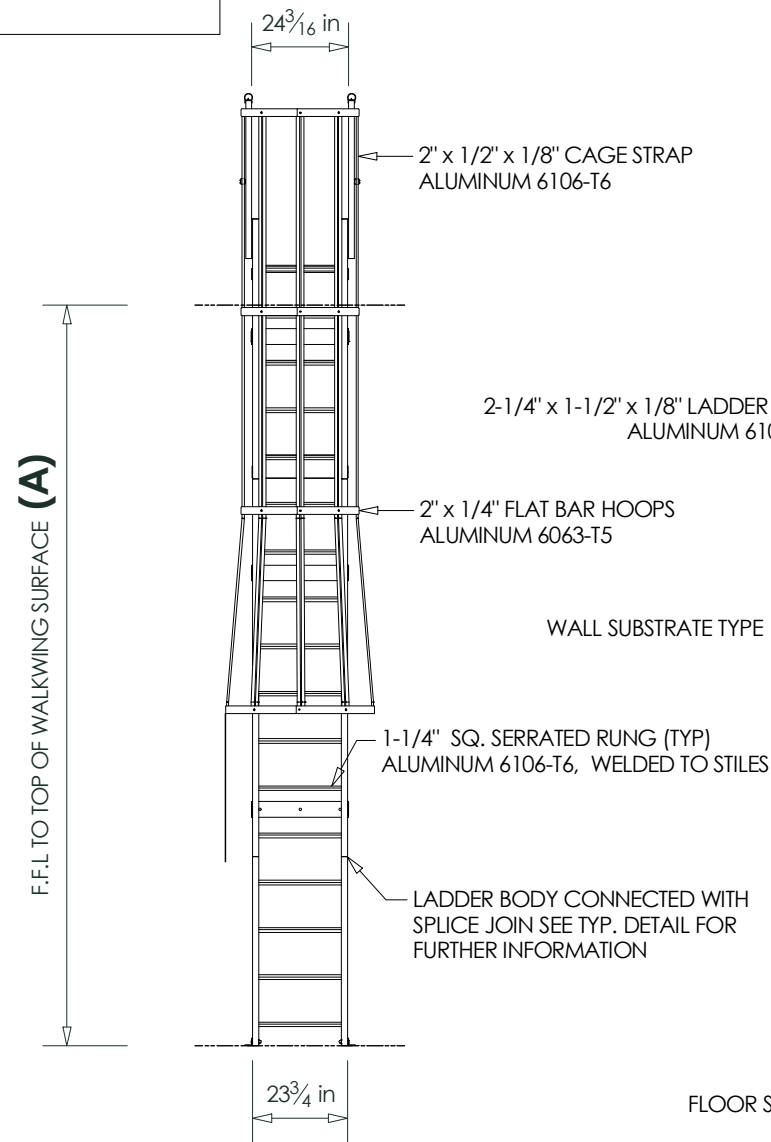


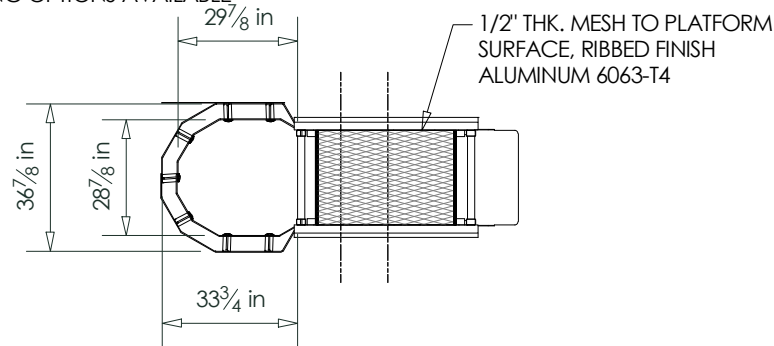
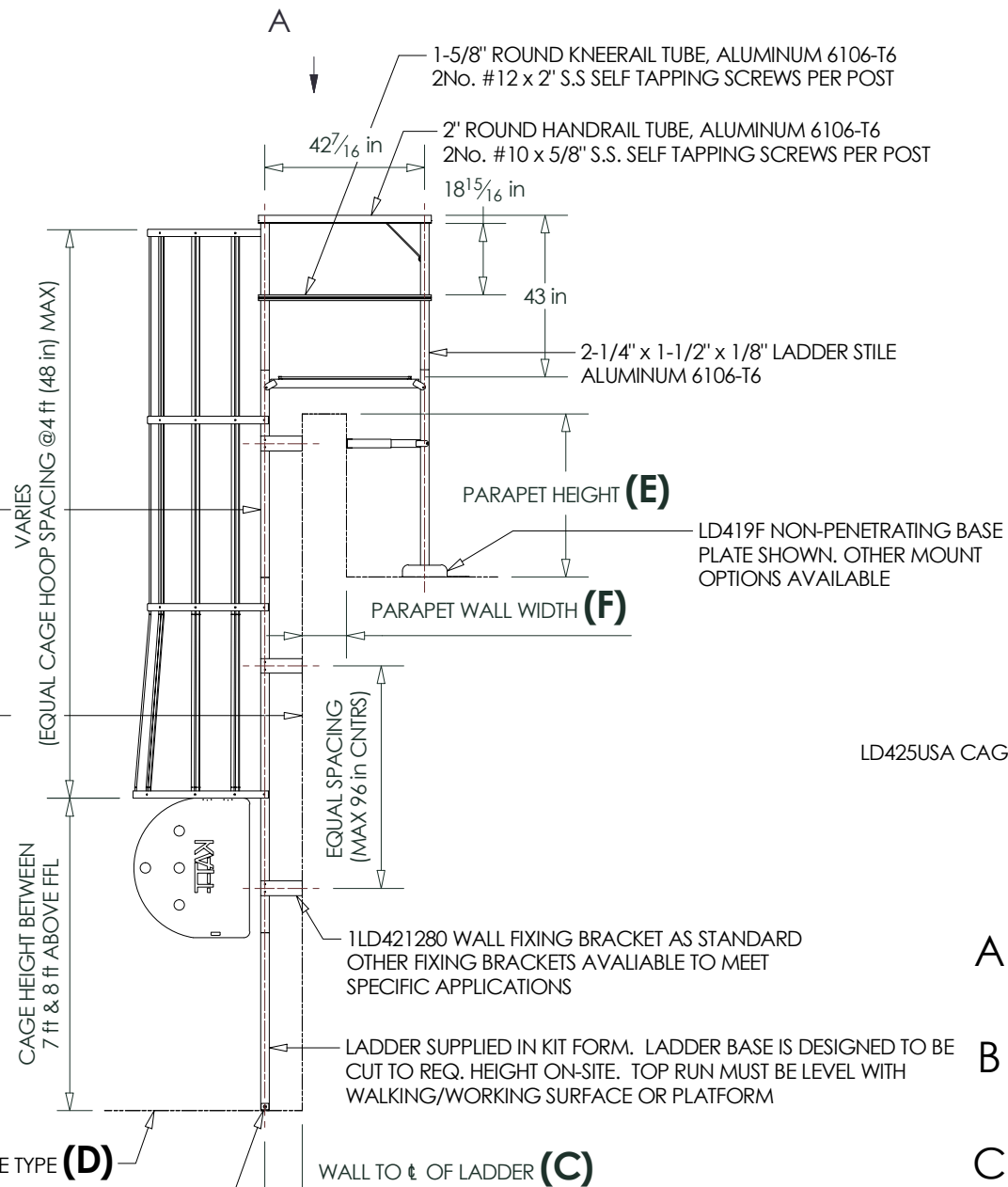
PROJECT REF: _____
 CONTRACTOR: _____
 APPROVED BY: _____
 SIGN HERE: _____



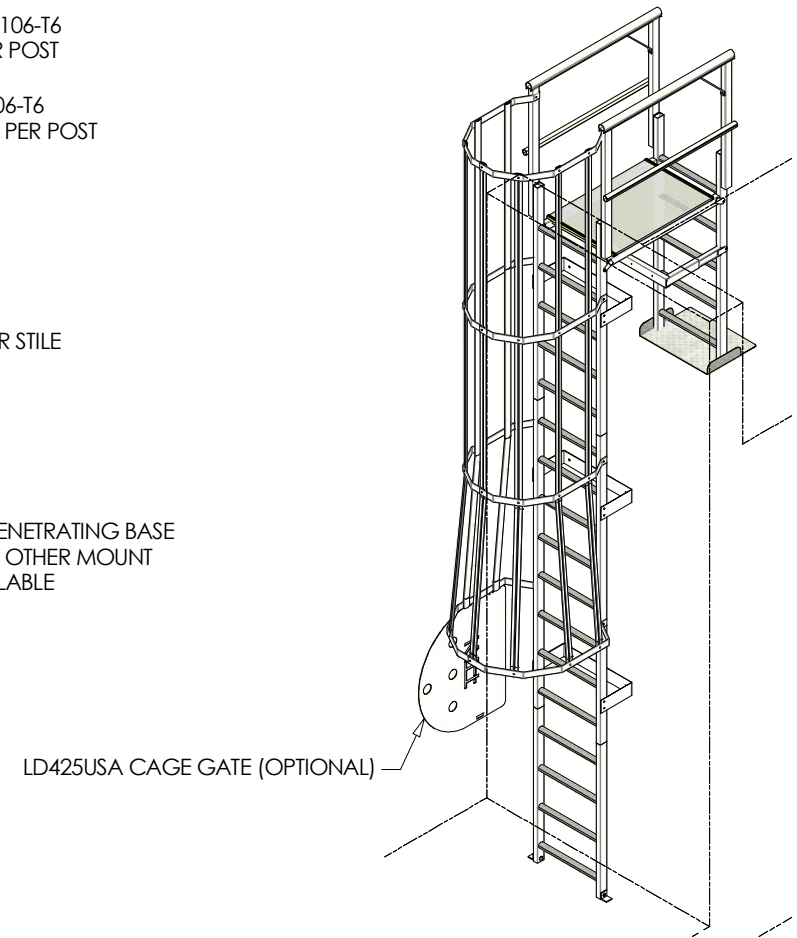
FRONT ELEVATION (1 / 48)

| AVAILABLE LADDER KITS | |
|-----------------------|---------------|
| CODE | HEIGHTS UP TO |
| RL42.94 | 94" (7' 10") |
| RL42.141 | 141" (11' 9") |
| RL42.189 | 189" (15' 9") |
| RL42.234 | 234" (19' 6") |
| RL42.283 | 283" (23' 7") |
| RL42.330 | 330" (27' 6") |
| RL42.376 | 376" (31' 4") |
| RL42.423 | 423" (35' 3") |
| RL42.470 | 470" (39' 2") |

OTHER KITS AVAILABLE

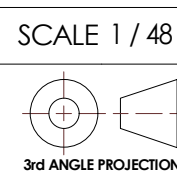


AUX A (1 / 48)



- A LOWER LEVEL TO UPPER LEVEL WALKING/WORKING HEIGHT
- B WALL SUBSTRATE TYPE (I.E. BRICK, CONCRETE BLOCK, METAL SLIDING, ETC)
- C WALL TO CENTRELINE OF LADDER. OSHA 1910.21(D)(2) STATES THAT THE DISTANCE FROM THE CENTRELINE OF THE RUNGS TO THE NEAREST PERMANENT OBJECT SHALL NOT BE LESS THAN 7". OSHA ALSO REQUIRES A PLATFORM IF THE DISTANCE EXCEEDS 12". PLEASE STATE WIDTH OF ANY GUTTER OR OBJECT (E.G. GUTTER 9" WIDE). FIXFAST WILL ENSURE THAT THE CORRECT BRACKET IS PROVIDED
- D FLOOR SUBSTRATE TYPE (I.E. ROOF MEMBRANE, CONCRETE, METAL, ROOF, ETC.)
- E INTERNAL PARAPET WALL HEIGHT
- F PARAPET WALL WIDTH

| | |
|---------|-----------------|
| DRN: RP | DATE: 6/10/2017 |
| CHK: WL | DATE: 3/11/2017 |
| APP: RP | DATE: 3/11/2017 |



| | |
|--------------|---|
| SCALE 1 / 48 | DIMENSION TOLERANCES UNLESS NOTED OTHERWISE |
| X ± 1mm | |
| X.X ± 0.25mm | |
| X.XX ± 0.1mm | |
| ANGLE ± 1° | |



6210S INDIANAPOLIS ROAD
 WHITESTOWN IN 46075 USA
 T +1 317 769 7710
 F +1 317 769 5560
 E sales@fixfastusa.com
 W www.fixfastusa.com

| | | |
|--|---------|----------------|
| DESCRIPTION CAGED VERTICAL LADDER WITH 3ft PARAPET PLATFORM | | SHT # 1 / 1 |
| MATERIAL | FINISH | SIZE B |
| DWG No. RL42 | FAB No. | REV 1 |

| | | | | |
|-----|-----------|----|-----|--------------------|
| 1 | 3/11/2017 | RP | WL | ISSUED FOR RELEASE |
| REV | DATE | BY | APP | COMMENTS |