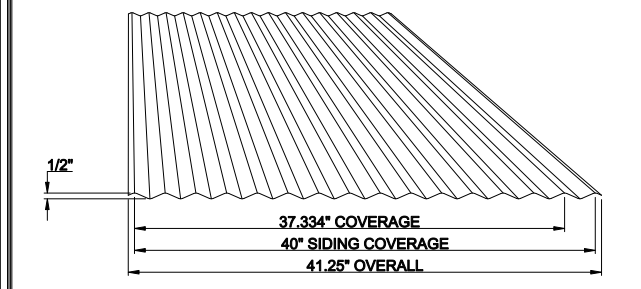


2.67" x 1/2" Corrugated Standard Details



1/2" Corrugated Load Table		Span Length															
Thickness	#	Span	1	2	3	4	5	6	7	8	9	10	11	12	13	14	15
18 Ga	1	150	104	76	58	46	37	31	26	22	19	16	14	-	-	-	-
20 Ga	3	187	130	95	73	57	46	38	32	27	23	20	18	-	-	-	-
22 Ga	3	143	99	73	56	44	35	29	24	21	18	16	14	-	-	-	-
24 Ga	1	130	90	66	51	40	32	27	22	19	16	14	12	-	-	-	-
26 Ga	3	163	113	83	63	50	40	33	28	24	20	18	15	-	-	-	-
28 Ga	3	108	73	53	41	32	26	21	18	15	13	-	-	-	-	-	-
30 Ga	3	131	91	67	51	40	32	27	22	19	16	14	12	-	-	-	-
32 Ga	1	79	55	40	31	24	19	16	13	-	-	-	-	-	-	-	-
34 Ga	3	99	69	50	38	30	24	20	17	14	12	-	-	-	-	-	-

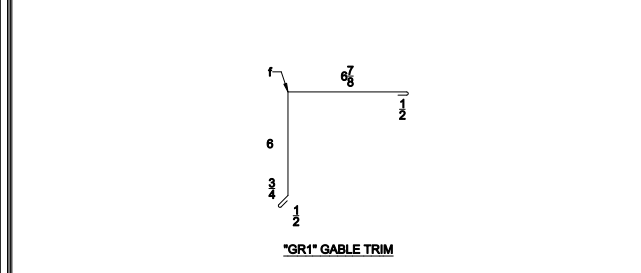
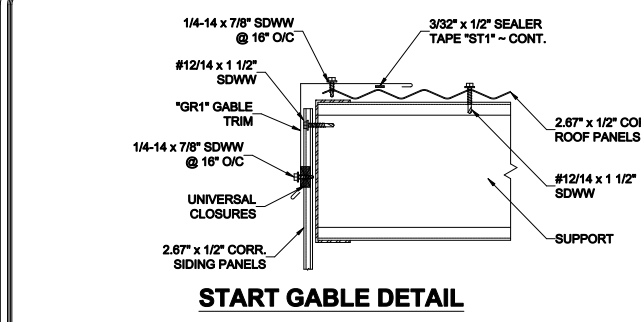
Stress governing, 37 ksi yield for 18, 20 Ga; 50 ksi for 22, 24 and 26 Ga

FLEXOSPAN RESERVES THE RIGHT TO REVISE, ADD, OR DELETE ANY DETAIL OR INFORMATION HEREIN WITHOUT PRIOR NOTICE.

FLEXOSPAN
2.67" x 1/2" Corrugated Standard Details
DRAWN BY: CANON
CHECKED BY: K.Kemmer
DATE: 2/29/09
REVISION: 1

COVER
2.67" x 1/2"

FLEXOSPAN
2.67" x 1/2" Corrugated Standard Details
DRAWN BY: CANON
CHECKED BY: K.Kemmer
DATE: 2/29/09
REVISION: 1

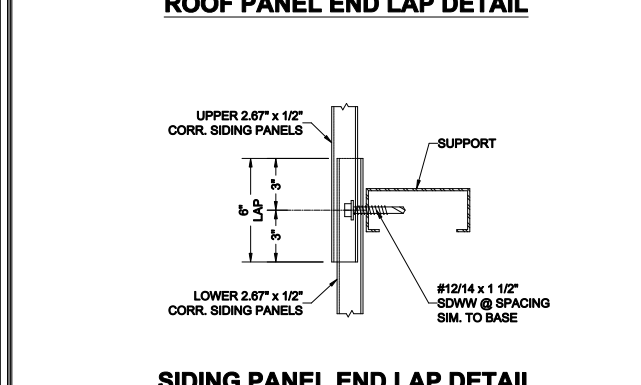
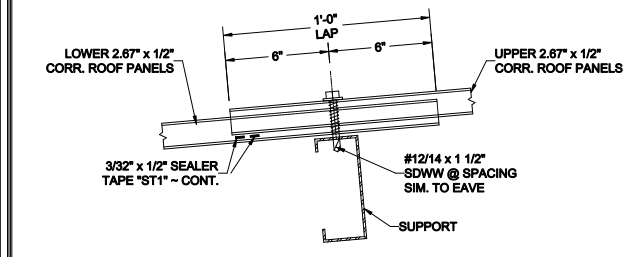


PITCH	"A" ANGLE
1:12	95°
2:12	101°
3:12	104°
4:12	108°
5:12	113°

FLEXOSPAN
2.67" x 1/2" Corrugated Standard Details
DRAWN BY: CANON
CHECKED BY: K.Kemmer
DATE: 2/29/09
REVISION: 1

Gable Detail
2.67" x 1/2"

FLEXOSPAN
2.67" x 1/2" Corrugated Standard Details
DRAWN BY: CANON
CHECKED BY: K.Kemmer
DATE: 2/29/09
REVISION: 1



FLEXOSPAN
2.67" x 1/2" Corrugated Standard Details
DRAWN BY: CANON
CHECKED BY: K.Kemmer
DATE: 2/16/09
REVISION: 1

Roof & Siding End Lap Details
2.67" x 1/2"

FLEXOSPAN
2.67" x 1/2" Corrugated Standard Details
DRAWN BY: CANON
CHECKED BY: K.Kemmer
DATE: 2/16/09
REVISION: 1

I. GENERAL NOTES:

(Ia). 2.67" x 1/2" CORRUGATED PANELS TO BE MANUFACTURED FROM G-90 GALVANIZED STEEL, GALVALUME, STAINLESS STEEL OR ALUMINUM ALLOY 3003-H14.

(Ib). 2.67" x 1/2" CORRUGATED PANELS TO BE BARE AS NOTED IN NOTE #1, OR PRE-PAINTED WITH A SILENCED POLYESTER, KYNAR®, OR FLEXSHIELD FINISH.

(Ic). 2.67" x 1/2" CORRUGATED PANELS TO BE SUPPLIED IN FORMED PANEL LENGTHS UP TO 40'-0". PANELS 40'-0" ARE AVAILABLE WITH SPECIAL PACKAGING AND SHIPPING.

(Id). 2.67" x 1/2" CORRUGATED PANELS CAN BE SUPPLIED WITH VARIOUS FLASHINGS, PIPE JACKS, FASTENERS, SEALANTS, AND CLOSURES TO COMPLETE A PROJECT.

(Ie). CONTRACTOR IS RESPONSIBLE FOR THE PROPER INSTALLATION OF THE PANEL SYSTEM AND TO INSURE ALL PURLINS, GIRTS OR SUB-FRAMING MEMBERS ARE PROPERLY INSTALLED AND ALIGNED IN ACCORDANCE WITH A.I.S.C. SPECIFICATIONS.

(If). DUE TO INHERENT TOLERANCES OF BASE METAL, ANY FLAT SURFACE PANELS COULD HAVE SOME "OIL-CANNING". THIS IS NOT A BASIS FOR REJECTION OF THE PRODUCT.

(Ig). DUE TO THE INDIVIDUALIZED NATURE OF PROJECTS, THE ERECTOR IS RESPONSIBLE FOR THE CORRECT PANEL LENGTHS & QUANTITIES, AND ALL ACCESSORY SIZES, TYPES, & QUANTITIES.

(Ih). IF AIR & WATER INFILTRATION TEST IS REQUIRED IN THE SPECIFICATIONS, THEN CALL FACTORY FOR REQUIRED MODIFICATIONS OF DETAILS.

II. UNLOADING & STORAGE NOTES:

(IIa). WHEN UNLOADING PANELS, SPREADER BAR & NYLON STRAPS OF THE PROPER SIZE, LENGTH, AND SPACING ARE TO BE USED BY SKILLED PERSONNEL APPLYING PROPER PROCEDURES TO PREVENT BUCKLING OR DAMAGE OF PANELS AND POSSIBLE BODILY INJURY.

(IIb). UPON DELIVERY, INSPECT & TAKE INVENTORY OF ALL PARTS. NOTE ANY DAMAGED OR MISSING PARTS ON THE BILL OF LADING AND CONTACT FACTORY IMMEDIATELY.

(IIc). INSPECT PANELS & TRIM FOR MOISTURE THAT MAY HAVE FORMED DURING SHIPMENT. IF MOISTURE IS PRESENT, THEN MATERIALS MUST BE UNPACKAGED, WIRED DRY, AND THEN RESTACKED.

(IId). IF INSIDE STORAGE IS NOT POSSIBLE, THEN ELEVATE ONE END OF BUNDLE AND COVER LOOSELY TO ALLOW AIR TO CIRCULATE THROUGH MATERIALS. NEVER USE PLASTIC TO COVER MATERIALS.

(IIf). TRAPPED MOISTURE CAN CAUSE STAINING OF PANELS OR PROMOTE RUST ON UNPAINTED MATERIALS.

(IIg). EXPOSURE TO DIRECT SUNLIGHT AND/OR HIGH HUMIDITY MAY CAUSE STRIPPABLE PLASTIC FILM TO ADHERE TO THE METAL PERMANENTLY AND DISCOLOR FINISH.

III. ERECTION NOTES:

(IIIa). 2.67" x 1/2" CORRUGATED PANELS ARE RECOMMENDED FOR ROOF SLOPES 1:12 AND GREATER.

(IIIb). 3/32" x 1/2" SEALER TAPE TO BE INSTALLED CONTINUOUSLY @ ALL SIDE LAPS OF ROOF PANELS ON ROOF SLOPES 4:12 AND LESS. SEALER TAPE IS OPTIONAL ON SLOPES GREATER THAN 4:12. SEALER TAPE TO BE USED AT ALL END LAPS REGARDLESS OF PITCH.

III. ERECTION NOTES(cont.):

(IIIc). SIDE LAP FASTENERS TO BE SPACED 16" O/C MAX.

(IIId). ON ROOFING APPLICATIONS ALL SCREWS SHOULD BE IN THE HI RIB OF PANEL. SEE ROOF FASTENING SCHEDULE FOR DETAILS.

(IIIe). CLOSED CELL POLYETHYLENE CLOSURES FACTORY FORMED TO THE PANEL PROFILE TO BE FIELD INSTALLED WHERE NECESSARY TO WEATHERTIGHT THE PANEL SYSTEM.

(IIIf). 2.67" x 1/2" CORRUGATED PANELS ARE TO BE SQUARE WITH BUILDING & ALIGNED USING MARKS @ THE EAVES, RIDGE, BASE, & VALLEYS. MARKS TO BE 40" ON CENTER FOR SIDING AND 37.334" ON CENTER FOR ROOFING.

(IIIg). CORRUGATIONS OF 2.67" x 1/2" CORRUGATED ROOF PANELS AT RIDGE TO ALIGN WITH CORRUGATIONS ON OPPOSITE SIDE OF THE RIDGE.

(IIIf). ANY CUTTING OR BEVELING OF PANELS @ ENDS OF PANEL RUNS, HIPS, VALLEYS, OR PENETRATIONS TO BE DONE BY THE ERECTOR IN THE FIELD.

(IIIn). REMOVE ALL STRIPPABLE PLASTIC AS PANELS ARE BEING ERECTED.

IV. CLEAN-UP NOTES:

(IVa). INSPECT ENTIRE ROOF AND SIDING AREA. REMOVE ANY PIECES OF STRIPPABLE PLASTIC FILM STILL LEFT ON PANELS OR FLASHING. MAKE SURE FLASHING IS PROPERLY INSTALLED AND CAULKED WHERE SHOWN ON DETAILS.

(IVb). ANY METAL SHAVINGS FROM FIELD CUTTING OR DRILLING OF PANELS MUST BE CLEANED OFF ROOF EACH DAY TO PREVENT RUST AND/OR DISCOLORATION OF PANELS.

(IVc). TOUCH-UP ANY SCRATCHES, NICKS, OR FASTENER HEADS WITH TOUCH-UP PAINT. MAKE SURE AREA IS THOROUGHLY CLEANED AND USE ONLY AN ARTIST'S BRUSH. COVER ONLY THE SCRATCH - DO NOT PAINT OVER ANY PREPARED AREA.

V. CAUTIONS:

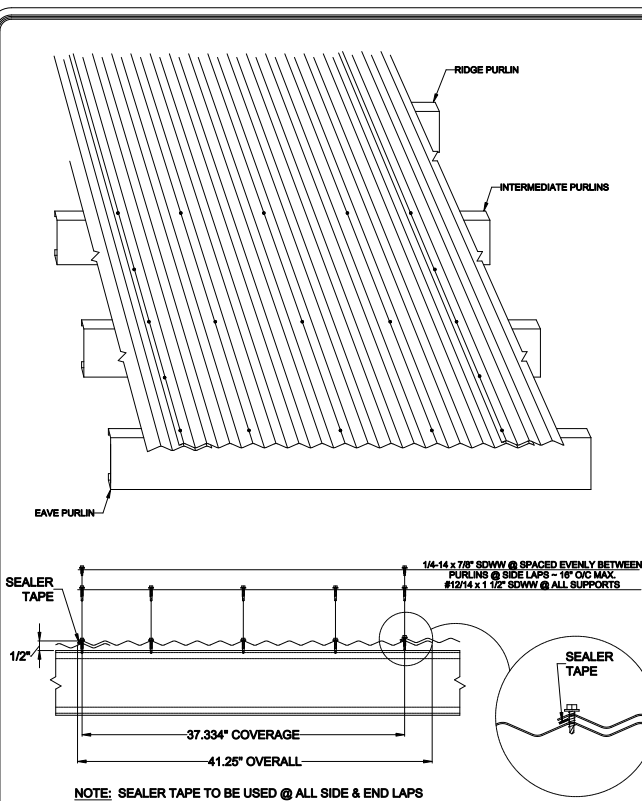
(Va). CARE MUST BE TAKEN TO NOT OVER TORQUE FASTENERS.

(Vb). DO NOT UNDER ANY CIRCUMSTANCE, STEP ON THE PANEL AT THE PANEL ENDS. THE ROOF PANEL MAY NOT SUPPORT THE WEIGHT OF A MAN AT THESE LOCATIONS WHICH COULD RESULT IN SERIOUS INJURY AND IT COULD AFFECT PANEL ALIGNMENT.

(Vc). CARE MUST BE TAKEN IN PROTECTING PANELS FROM OTHER TRADES, DISSIMILAR METALS, AND POSSIBLE RUN OFF OF HVAC EQUIPMENT.

(Vd). THESE STANDARD DETAILS ARE PROVIDED FOR REFERENCE ONLY. OTHER DETAILS MAY BE NECESSARY BASED ON ACTUAL JOBSITE CONDITIONS, BUILDING CODE AND REGULATORY ISSUES. OWNER/ARCHITECT/CONTRACTOR/ERECTOR REQUIREMENTS AND MANY OTHER FACTORS. THE PURCHASER IS RESPONSIBLE FOR THE SELECTION, USE AND IMPLEMENTATION OF THE PROPER DETAILS.

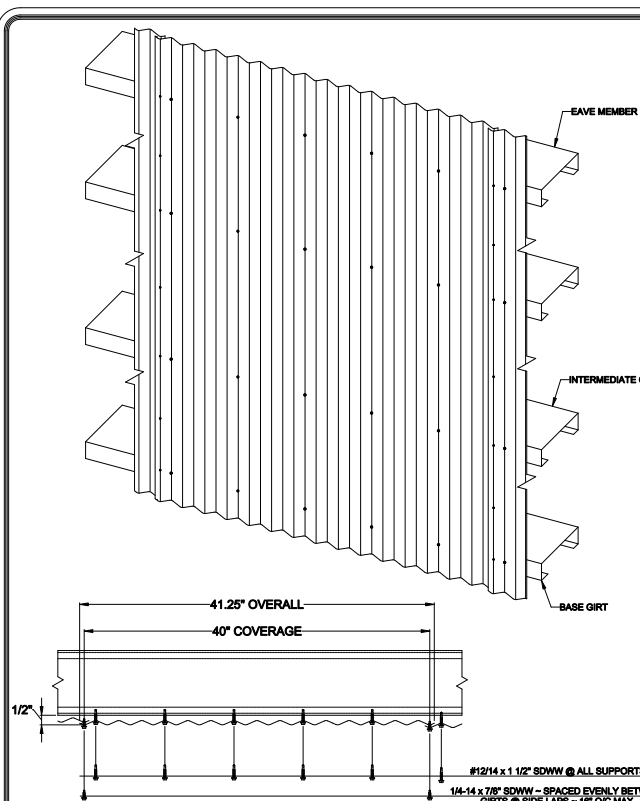
(Ve). INSURING WATER-TIGHTNESS ON ANY GIVEN PROJECT IS THE FUNCTION OF THE INSTALLER. THE ARCHITECT/GENERAL CONTRACTOR/INSTALLER HAVE THE RESPONSIBILITY TO SELECT DETAILS TO INSURE ADEQUATE WATER-TIGHTNESS TO MEET PARTICULAR BUILDING REQUIREMENTS.



FLEXOSPAN
2.67" x 1/2" Corrugated Standard Details
DRAWN BY: CANON
CHECKED BY: K.Kemmer
DATE: 2/14/09
REVISION: 1

Isometric Roofing Fastener Detail
2.67" x 1/2"

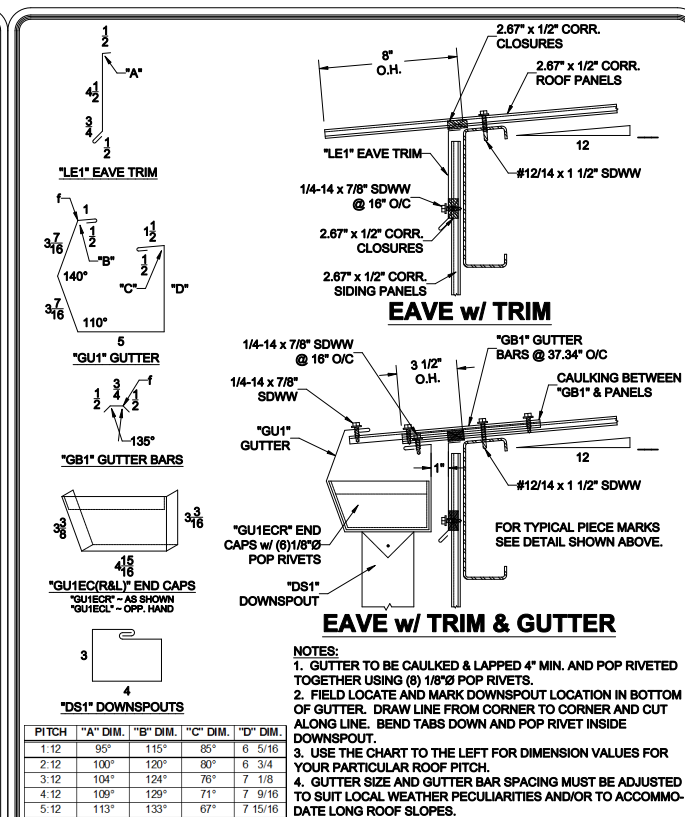
FLEXOSPAN
2.67" x 1/2" Corrugated Standard Details
DRAWN BY: CANON
CHECKED BY: K.Kemmer
DATE: 2/14/09
REVISION: 1



FLEXOSPAN
2.67" x 1/2" Corrugated Standard Details
DRAWN BY: CANON
CHECKED BY: K.Kemmer
DATE: 2/14/09
REVISION: 1

Isometric Siding Fastener Detail
2.67" x 1/2"

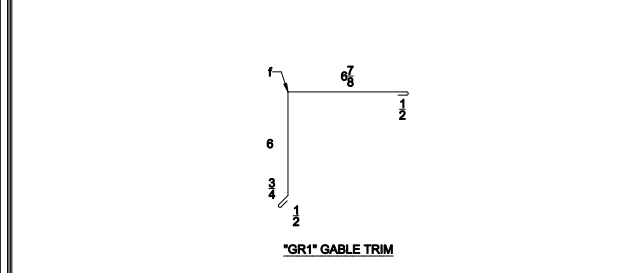
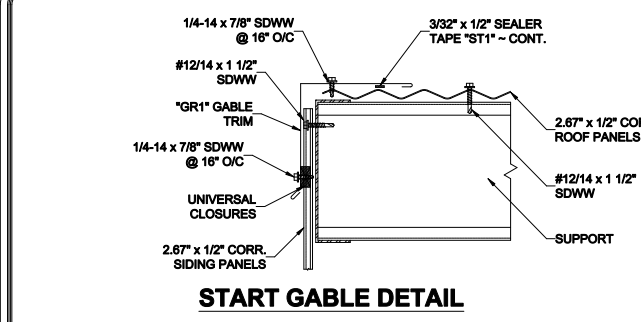
FLEXOSPAN
2.67" x 1/2" Corrugated Standard Details
DRAWN BY: CANON
CHECKED BY: K.Kemmer
DATE: 2/14/09
REVISION: 1



FLEXOSPAN
2.67" x 1/2" Corrugated Standard Details
DRAWN BY: CANON
CHECKED BY: K.Kemmer
DATE: 2/14/09
REVISION: 1

Eave Details
2.67" x 1/2"

FLEXOSPAN
2.67" x 1/2" Corrugated Standard Details
DRAWN BY: CANON
CHECKED BY: K.Kemmer
DATE: 2/14/09
REVISION: 1

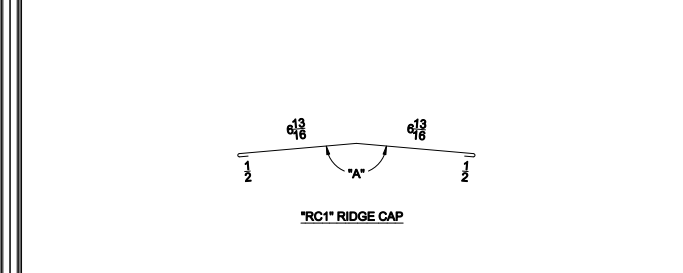
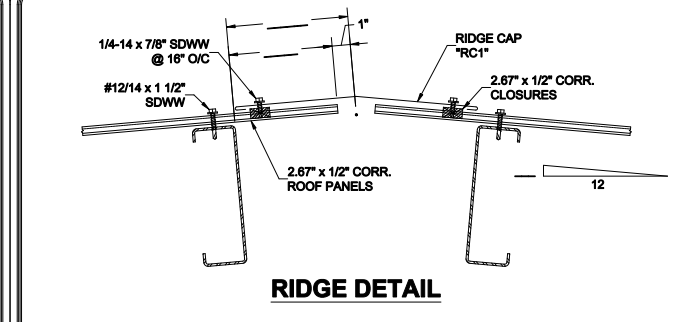


PITCH	"A" ANGLE
1:12	95°
2:12	101°
3:12	104°
4:12	108°
5:12	113°

FLEXOSPAN
2.67" x 1/2" Corrugated Standard Details
DRAWN BY: CANON
CHECKED BY: K.Kemmer
DATE: 2/29/09
REVISION: 1

Gable Detail
2.67" x 1/2"

FLEXOSPAN
2.67" x 1/2" Corrugated Standard Details
DRAWN BY: CANON
CHECKED BY: K.Kemmer
DATE: 2/29/09
REVISION: 1

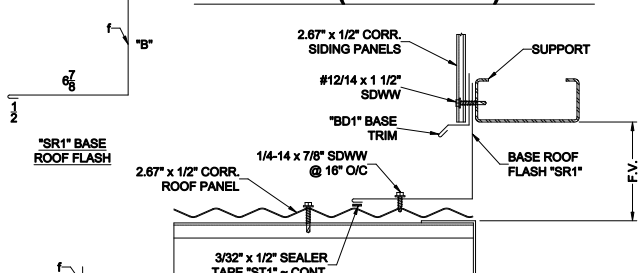
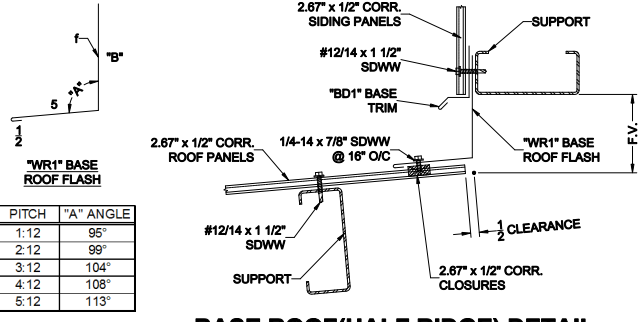


PITCH	"A" ANGLE
1:12	95°
2:12	101°
3:12	104°
4:12	108°
5:12	113°

FLEXOSPAN
2.67" x 1/2" Corrugated Standard Details
DRAWN BY: CANON
CHECKED BY: K.Kemmer
DATE: 2/14/09
REVISION: 1

Ridge Detail
2.67" x 1/2"

FLEXOSPAN
2.67" x 1/2" Corrugated Standard Details
DRAWN BY: CANON
CHECKED BY: K.Kemmer
DATE: 2/14/09
REVISION: 1

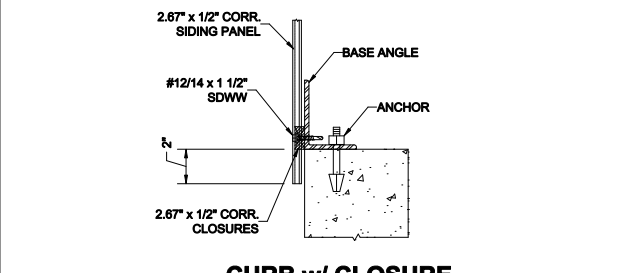
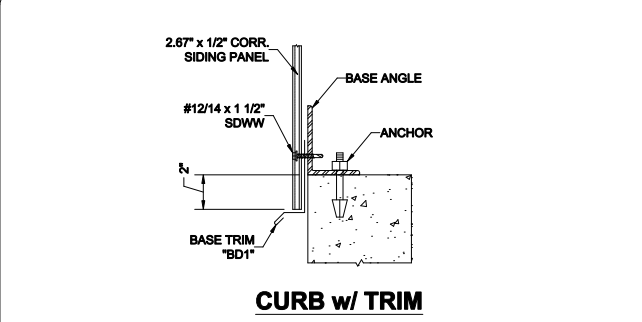


PITCH	"A" ANGLE
1:12	95°
2:12	101°
3:12	104°
4:12	108°
5:12	113°

FLEXOSPAN
2.67" x 1/2" Corrugated Standard Details
DRAWN BY: CANON
CHECKED BY: K.Kemmer
DATE: 2/14/09
REVISION: 1

Base Roof Details
2.67" x 1/2"

FLEXOSPAN
2.67" x 1/2" Corrugated Standard Details
DRAWN BY: CANON
CHECKED BY: K.Kemmer
DATE: 2/14/09
REVISION: 1

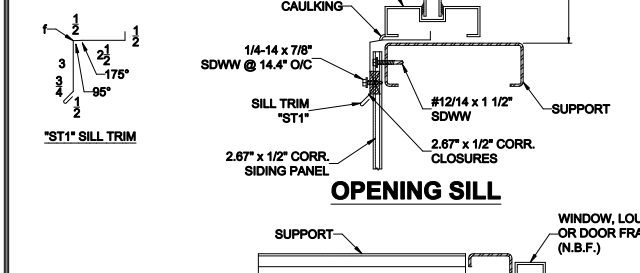
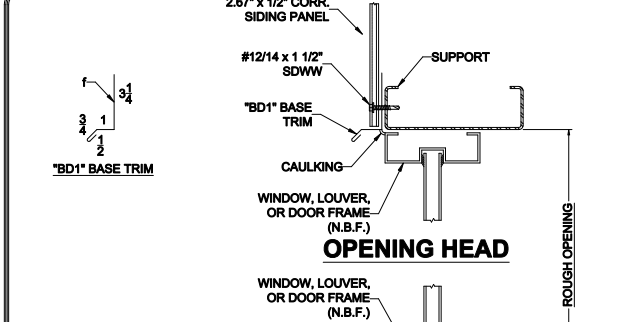


PITCH	"A" ANGLE
1:12	95°
2:12	101°
3:12	104°
4:12	108°
5:12	113°

FLEXOSPAN
2.67" x 1/2" Corrugated Standard Details
DRAWN BY: CANON
CHECKED BY: K.Kemmer
DATE: 2/14/09
REVISION: 1

Curb Details
2.67" x 1/2"

FLEXOSPAN
2.67" x 1/2" Corrugated Standard Details
DRAWN BY: CANON
CHECKED BY: K.Kemmer
DATE: 2/14/09
REVISION: 1

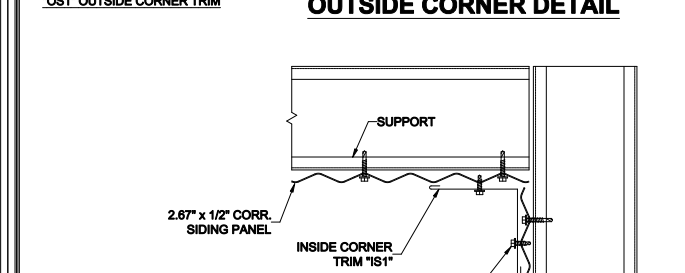
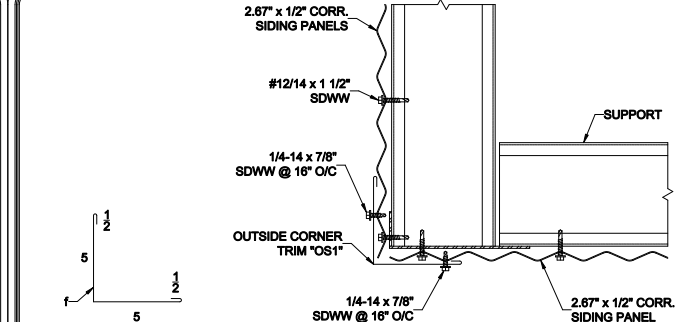


PITCH	"A" ANGLE
1:12	95°
2:12	101°
3:12	104°
4:12	108°
5:12	113°

FLEXOSPAN
2.67" x 1/2" Corrugated Standard Details
DRAWN BY: CANON
CHECKED BY: K.Kemmer
DATE: 2/16/09
REVISION: 1

Opening Head, Sill, & Jamb Details
2.67" x 1/2"

FLEXOSPAN
2.67" x 1/2" Corrugated Standard Details
DRAWN BY: CANON
CHECKED BY: K.Kemmer
DATE: 2/16/09
REVISION: 1

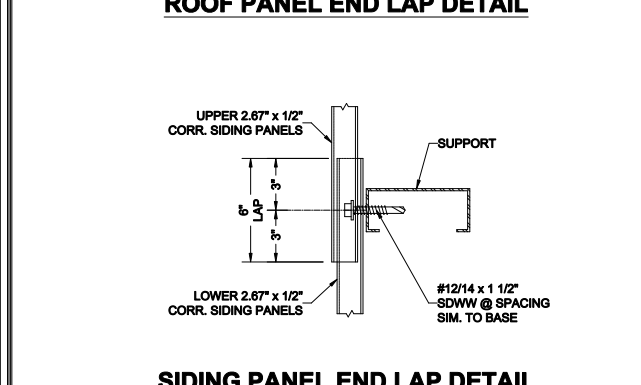
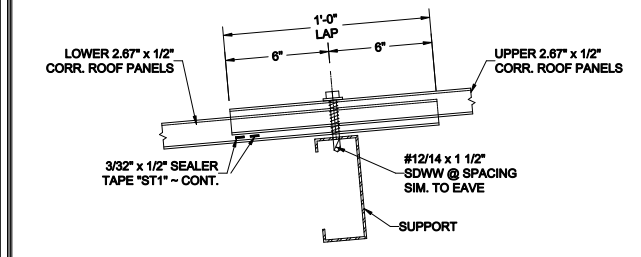


PITCH	"A" ANGLE
1:12	95°
2:12	101°
3:12	104°
4:12	108°
5:12	113°

FLEXOSPAN
2.67" x 1/2" Corrugated Standard Details
DRAWN BY: CANON
CHECKED BY: K.Kemmer
DATE: 2/16/09
REVISION: 1

Outside & Inside Corner Details
2.67" x 1/2"

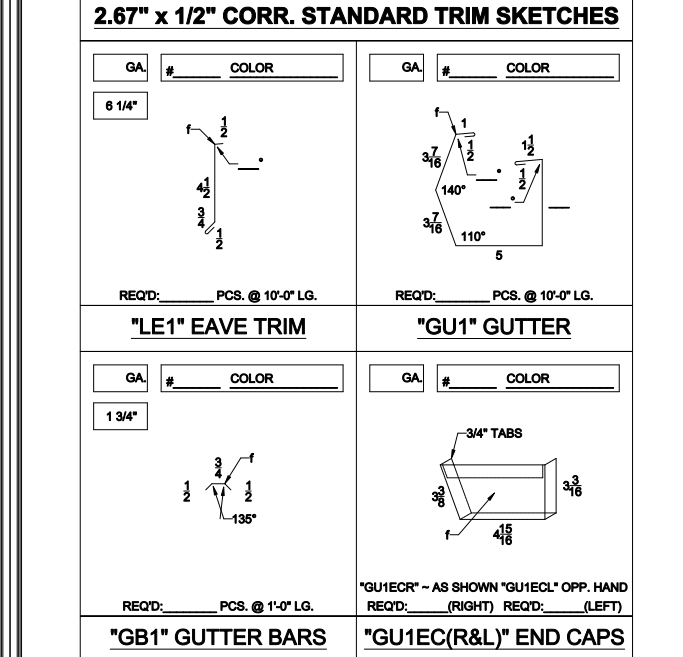
FLEXOSPAN
2.67" x 1/2" Corrugated Standard Details
DRAWN BY: CANON
CHECKED BY: K.Kemmer
DATE: 2/16/09
REVISION: 1



FLEXOSPAN
2.67" x 1/2" Corrugated Standard Details
DRAWN BY: CANON
CHECKED BY: K.Kemmer
DATE: 2/16/09
REVISION: 1

Roof & Siding End Lap Details
2.67" x 1/2"

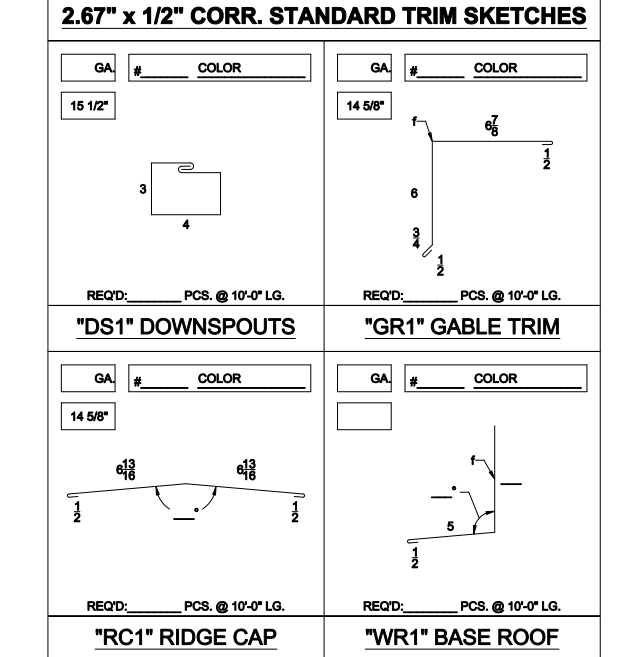
FLEXOSPAN
2.67" x 1/2" Corrugated Standard Details
DRAWN BY: CANON
CHECKED BY: K.Kemmer
DATE: 2/16/09
REVISION: 1



FLEXOSPAN
2.67" x 1/2" Corrugated Standard Details
DRAWN BY: CANON
CHECKED BY: K.Kemmer
DATE: 2/16/09
REVISION: 1

2.67" x 1/2" CORR. STANDARD TRIM SKETCHES
2.67" x 1/2"

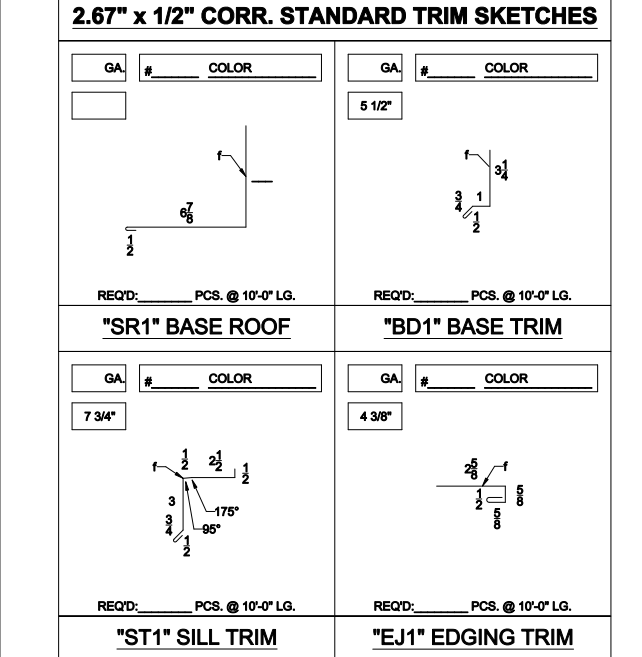
FLEXOSPAN
2.67" x 1/2" Corrugated Standard Details
DRAWN BY: CANON
CHECKED BY: K.Kemmer
DATE: 2/16/09
REVISION: 1



FLEXOSPAN
2.67" x 1/2" Corrugated Standard Details
DRAWN BY: CANON
CHECKED BY: K.Kemmer
DATE: 2/16/09
REVISION: 1

2.67" x 1/2" CORR. STANDARD TRIM SKETCHES
2.67" x 1/2"

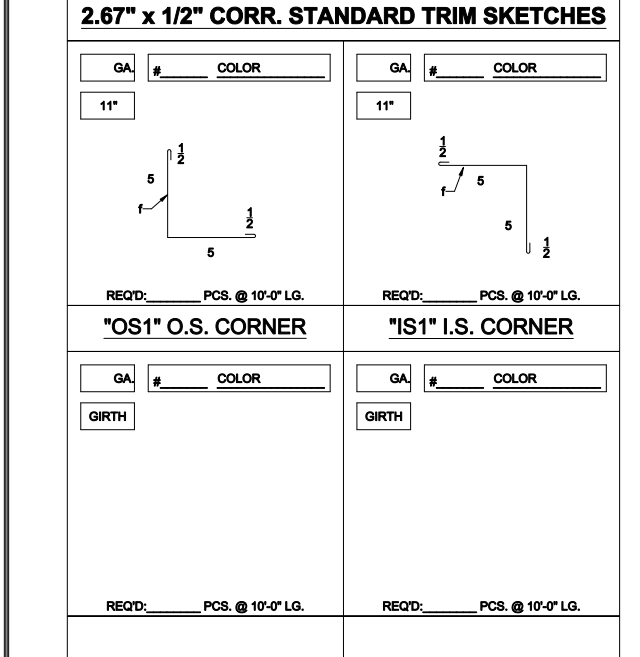
FLEXOSPAN
2.67" x 1/2" Corrugated Standard Details
DRAWN BY: CANON
CHECKED BY: K.Kemmer
DATE: 2/16/09
REVISION: 1



FLEXOSPAN
2.67" x 1/2" Corrugated Standard Details
DRAWN BY: CANON
CHECKED BY: K.Kemmer
DATE: 2/17/09
REVISION: 1

2.67" x 1/2" CORR. STANDARD TRIM SKETCHES
2.67" x 1/2"

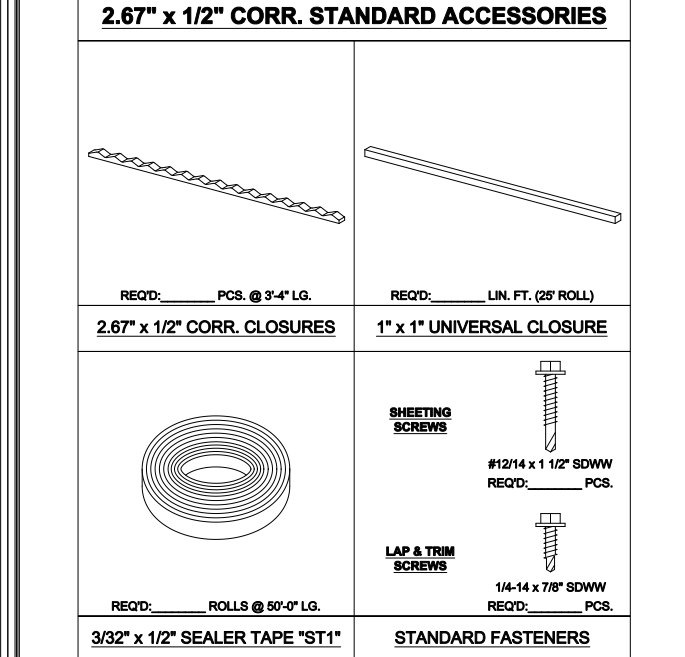
FLEXOSPAN
2.67" x 1/2" Corrugated Standard Details
DRAWN BY: CANON
CHECKED BY: K.Kemmer
DATE: 2/17/09
REVISION: 1



FLEXOSPAN
2.67" x 1/2" Corrugated Standard Details
DRAWN BY: CANON
CHECKED BY: K.Kemmer
DATE: 2/17/09
REVISION: 1

2.67" x 1/2" CORR. STANDARD TRIM SKETCHES
2.67" x 1/2"

FLEXOSPAN
2.67" x 1/2" Corrugated Standard Details
DRAWN BY: CANON
CHECKED BY: K.Kemmer
DATE: 2/17/09
REVISION: 1



FLEXOSPAN
2.67" x 1/2" Corrugated Standard Details
DRAWN BY: CANON
CHECKED BY: K.Kemmer
DATE: 2/29/09
REVISION: 1

2.67" x 1/2" CORR. STANDARD ACCESSORIES
2.67" x 1/2"

FLEXOSPAN
2.67" x 1/2" Corrugated Standard Details
DRAWN BY: CANON
CHECKED BY: K.Kemmer
DATE: 2/29/09
REVISION: 1