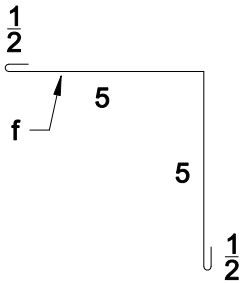
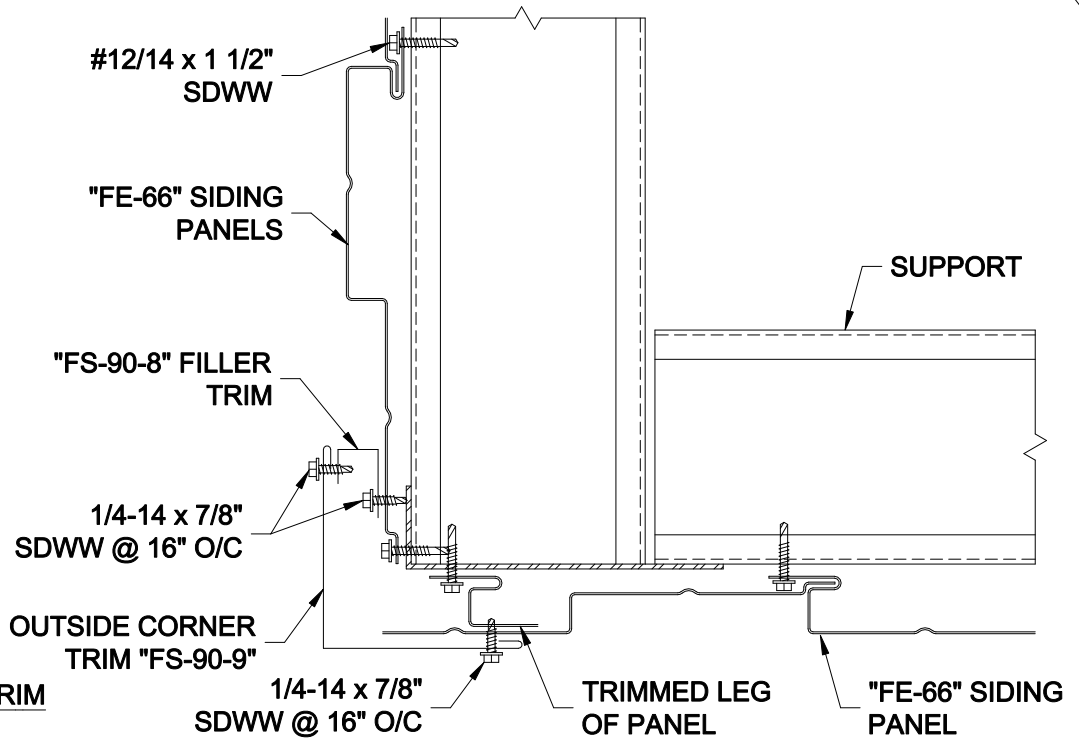


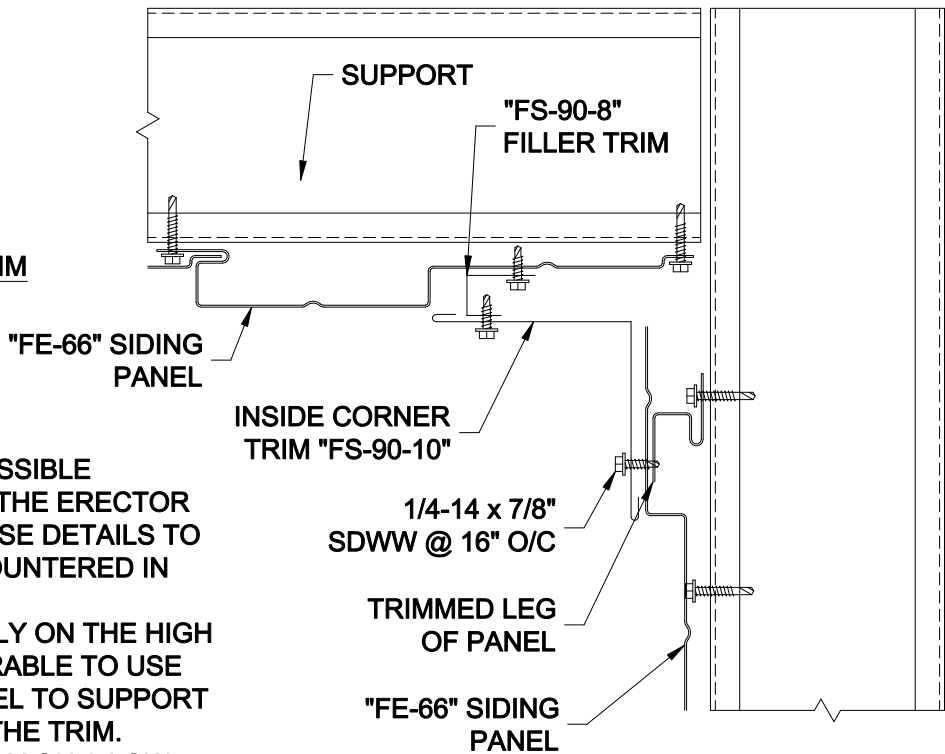
"FS-90-9" OUTSIDE CORNER TRIM



"FS-90-10" INSIDE CORNER TRIM



OUTSIDE CORNER DETAIL



INSIDE CORNER DETAIL

ERECTOR NOTES:

1. THESE DETAILS SHOW (1) POSSIBLE CONDITION FOR EACH DETAIL. THE ERECTOR IS RESPONSIBLE TO ADAPT THESE DETAILS TO THE SPECIFIC CONDITION ENCOUNTERED IN THE FIELD.
2. IF THE PANEL ENDS PARTIALLY ON THE HIGH CELL OF THE PANEL; IT IS DESIRABLE TO USE THE TRIMMED LEG OF THE PANEL TO SUPPORT THE PANEL WHILE ATTACHING THE TRIM.
3. IF THE PANEL ENDS PARTIALLY ON A LOW CELL; THEN THE "FS-90-8" FILLER TRIM MUST BE USED.



BOX 515 RAILROAD STREET
SANDY LAKE, PENNSYLVANIA 16145-0515
PHONE: 800-245-0396 ° FAX: 724-376-3864

"Fe-66" Concealed Fastener
Panel
Standard Details

DRAWN BY: RW

DATE: 2/22/00

CHECKED BY: CANON

DATE:

Outside & Inside Corner
Details

DRAWING NO.

FE66-9