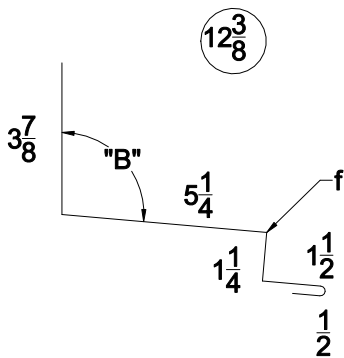
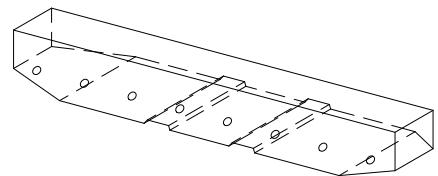


* SEE RIDGE DETAIL FOR "A" DIMENSION



"SS-07-1" BASE ROOF TRIM



"SS-01-2" OUTSIDE METAL CLOSURE

ERECTOR NOTES:

1. THE "SS-07-1" SHOULD BE CAULKED AND LAPPED 4" AWAY FROM PREVAILING WIND. BASE ROOF TRIM SHOULD BE STITCHED TOGETHER AT ENDS USING TWO 1/4-14 x 7/8" SDWW FASTENERS.
2. THE ENDS OF ROOF PANELS TO BE POSITIONED "A" AWAY FROM GIRT LINE.
2. "B" DIMENSION VARIES AS NECESSARY TO MATCH ROOF PITCH.

**BOX 515 RAILROAD STREET
SANDY LAKE, PENNSYLVANIA 16145-0515
PHONE: 800-245-0396 ° FAX: 724-376-3864**

"Fss-18" Standing Segm Details		High Eave - Base Roof Detail
DRAWN BY: RW	DATE: 7-13-00	DRAWING NO.
CHECKED BY: CANON	DATE:	FSS18-17