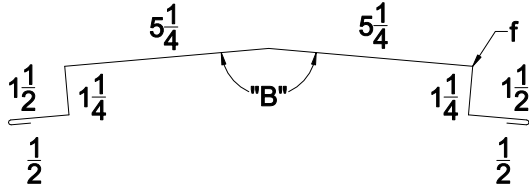


"FSS-18" STANDARD TRIM SKETCHES

GA. # _____ COLOR _____

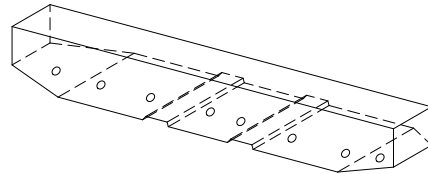
17"



REQ'D: _____ PCS. @ 10'-0" LG.

GA. # _____ COLOR _____

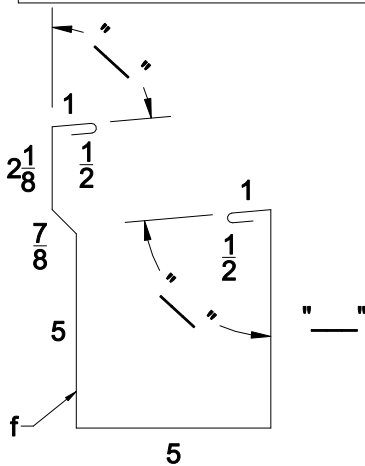
14 5/8"



REQ'D: _____ PCS. @ 1'-6" LG.

"SS-01-1" RIDGE CAP

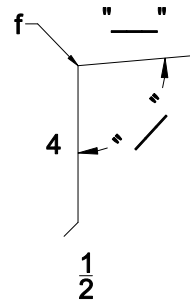
GA. # _____ COLOR _____



REQ'D: _____ PCS. @ 10'-0" LG.

"SS-01-2" METAL CLOSURE

GA. # _____ COLOR _____



REQ'D: _____ PCS. @ 10'-0" LG.

"SS-02-1" GUTTER

"SS-02-2" EAVE TRIM

NOTES:

1. ALL TRIM IS MANUFACTURED IN 10'-0" LENGTHS UNLESS SPECIFIED OTHERWISE.
2. MAXIMUM LENGTH OF TRIM IS 10'-0".
3. PLEASE INSERT GAUGE OF MATERIAL IN SPACES PROVIDED.
4. PLEASE INSERT COLOR OF MATERIAL IN SPACES PROVIDED.
5. PLEASE INSERT QUANTITY DESIRED WHERE SHOWN.
6. PLEASE INSERT REQ'D DIMENSIONS.



BOX 515 RAILROAD STREET
SANDY LAKE, PENNSYLVANIA 16145-0515
PHONE: 800-245-0396 ° FAX: 724-376-3864

"Fss-18" Standing
Segm Details

DRAWN BY: RW

DATE: 7-13-00

REVISED BY: CANON

DATE:

"Fss-18" Standard Trim
Sketches

DRAWING NO.

FSS18-22