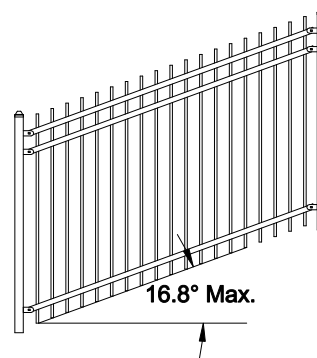
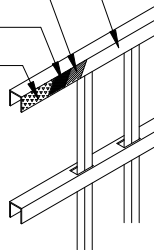


Architectural Grade Polyester Powder Coat
TGIC and Lead Free

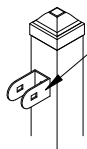
Electrodeposition Process of
Lead and Tin Free Epoxide Resin Primer

Zinc Phosphate Coating

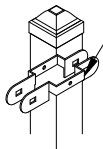
G-60 Pre-Galvanized Sheet



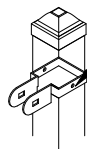
Applicable Brackets



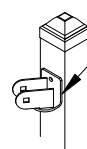
EX-107
Bracket



EXW-207
Bracket



EXW-307
Bracket



EXS-107
Bracket

The product design contained on this drawing is proprietary to Fortress Iron, LP, Garland, Texas, USA, and is not to be copied electronically or manually, or reproduced in any manner, or divulged to other sources, without the expressed written permission of an authorized representative of Fortress Iron L.P.



Fortress Fence
1720 North 1st Street
Garland, TX 75040
972-231-4132

Style: EXT3	Description: EXT3-V3-58" IND 90.5	
Height: 58"	Rev #:	Rev Date:
Panel Length: 90.5"	Scale: Do Not Scale	
Class: Industrial	Drawn By: BB	Date: 10/10/18