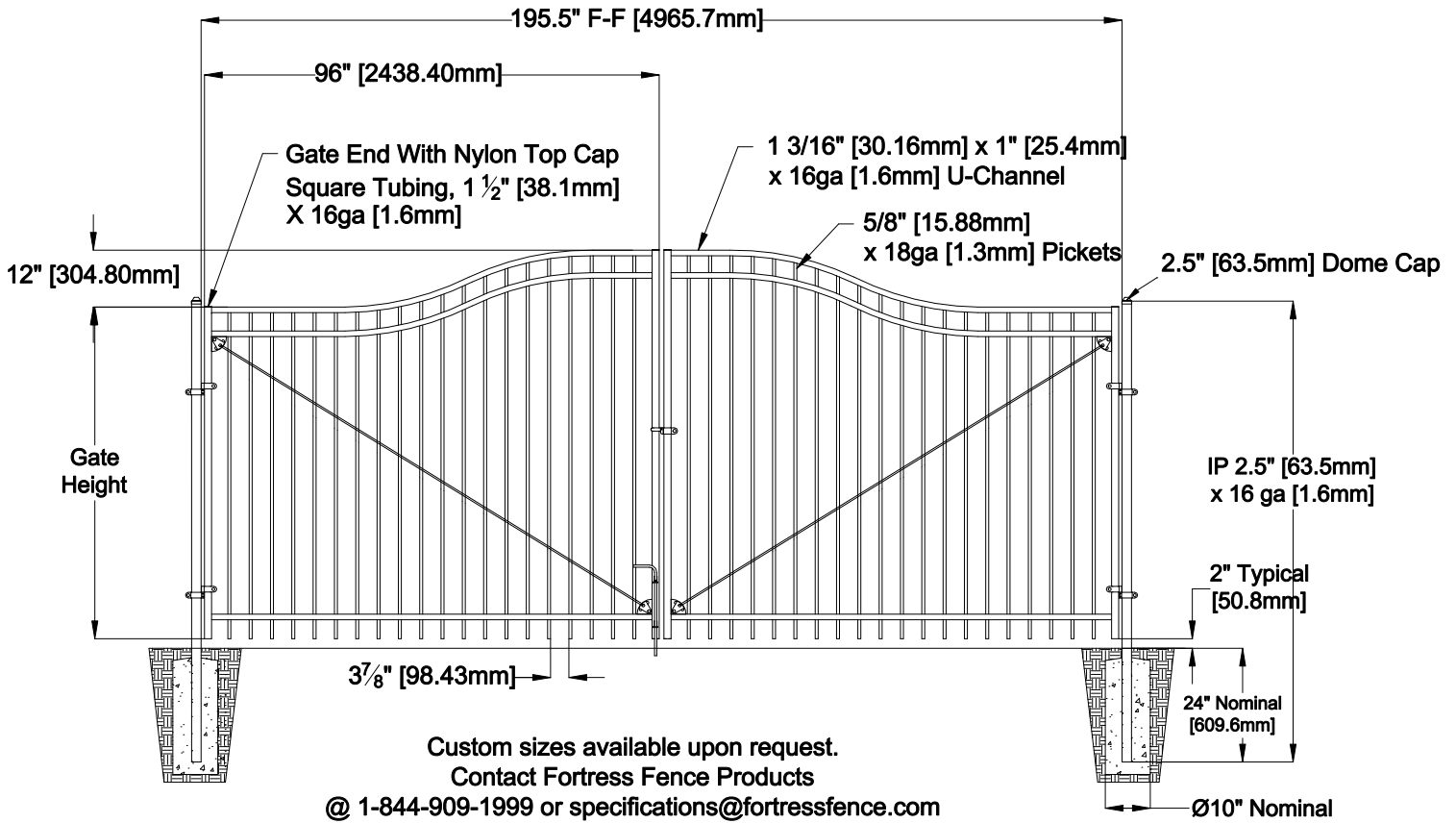
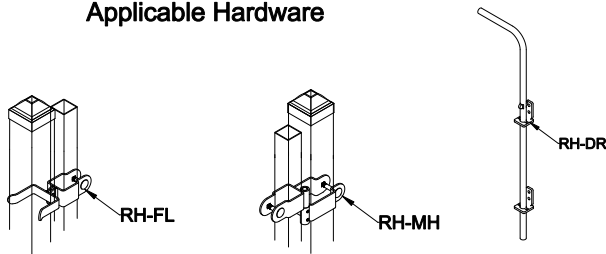


Select Desired Height

- 34" [863.6mm]
- 40" [1016.0mm]
- 46" [1168.4mm]
- 58" [1473.2mm]
- 70" [1778.0mm]



Applicable Hardware

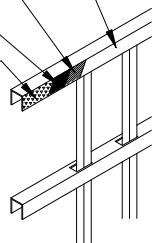


Architectural Grade Polyester Powder Coat
TGIC and Lead Free

Electrodeposition Process of
Lead and Tin Free Epoxide Resin Primer

Zinc Phosphate Coating

G-60 Pre-Galvanized Sheet



The product design contained on this drawing is proprietary to Fortress Iron, LP, Garland, Texas, USA, and is not to be copied electronically or manually, or reproduced in any manner, or divulged to other sources, without the expressed written permission of an authorized representative of Fortress Iron L.P. *(Always consult local building codes)



Fortress Fence
1720 North 1st Street
Garland, TX 75040
972-231-4132

Style: Flat Top	Description: (2)FT3-VERSAI-RES-08-ADGP	
Height: 34",40",46",58",70"	Rev #:	Rev Date:
Gate Width: 96"	Scale: Do Not Scale	
Class: Residential	Drawn By: JS	Date: 3/31/17