

**NOT TO SCALE**

**FINISHES:**

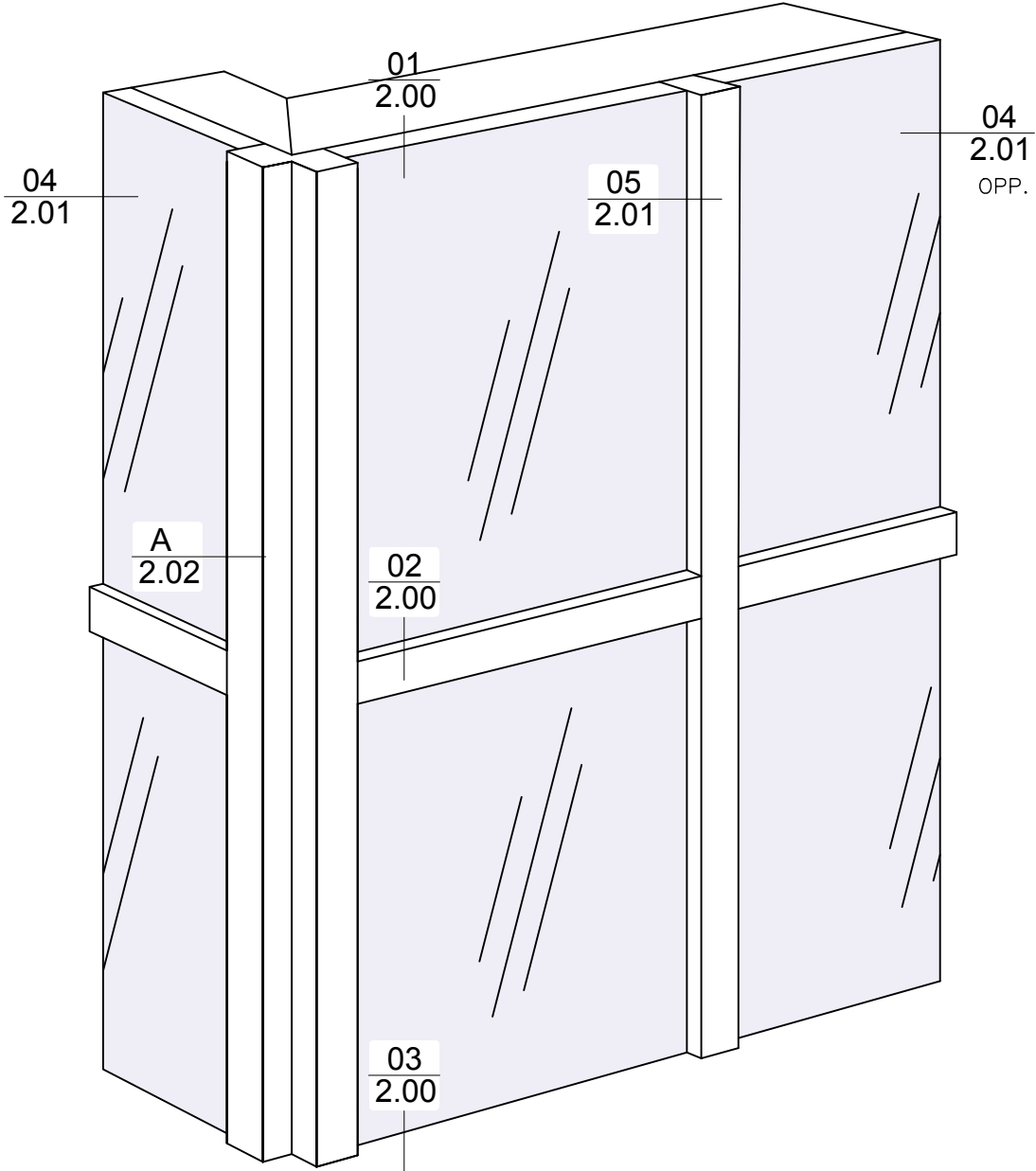
ALUM. - PAINTED or ANODIZED  
 ST. STL. - #4 SATIN, or BRITE  
 SPECIAL - CONTACT FACTORY

**SYSTEM II  
 SERIES-500  
 FLUSH**

FULLER PHOENIX ARCHITECTURAL PRODUCTS

713.699.2262

www.fullerphoenix.com



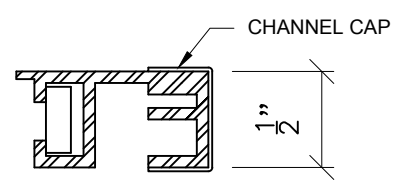
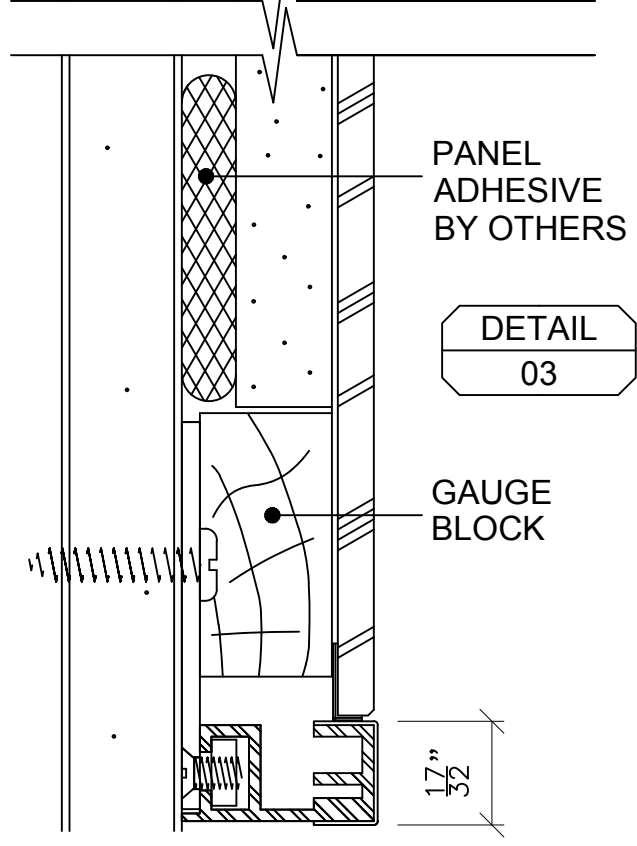
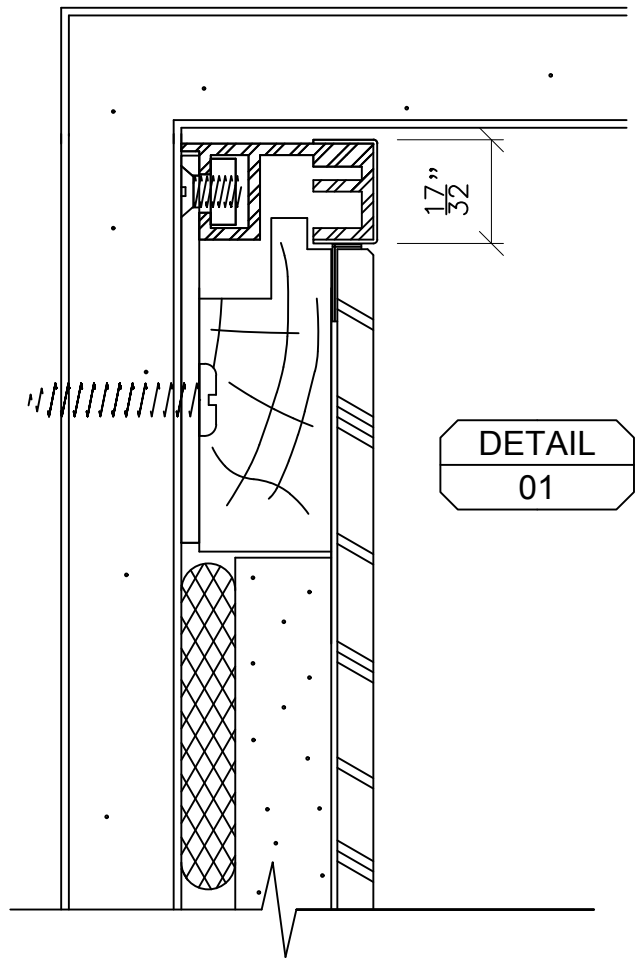
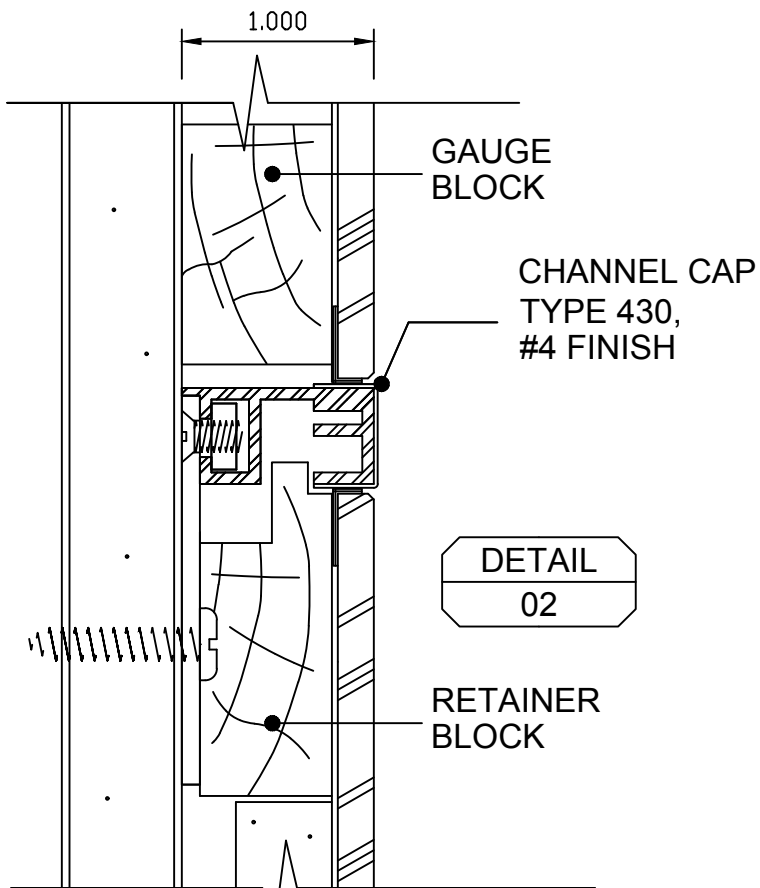
**NOT TO SCALE**

**FINISHES:**

- ALUM. - PAINTED or ANODIZED
- ST. STL. - #4 SATIN, or BRITE
- SPECIAL - CONTACT FACTORY

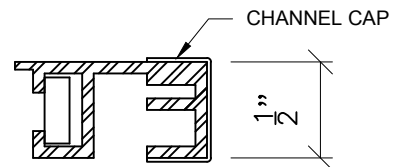
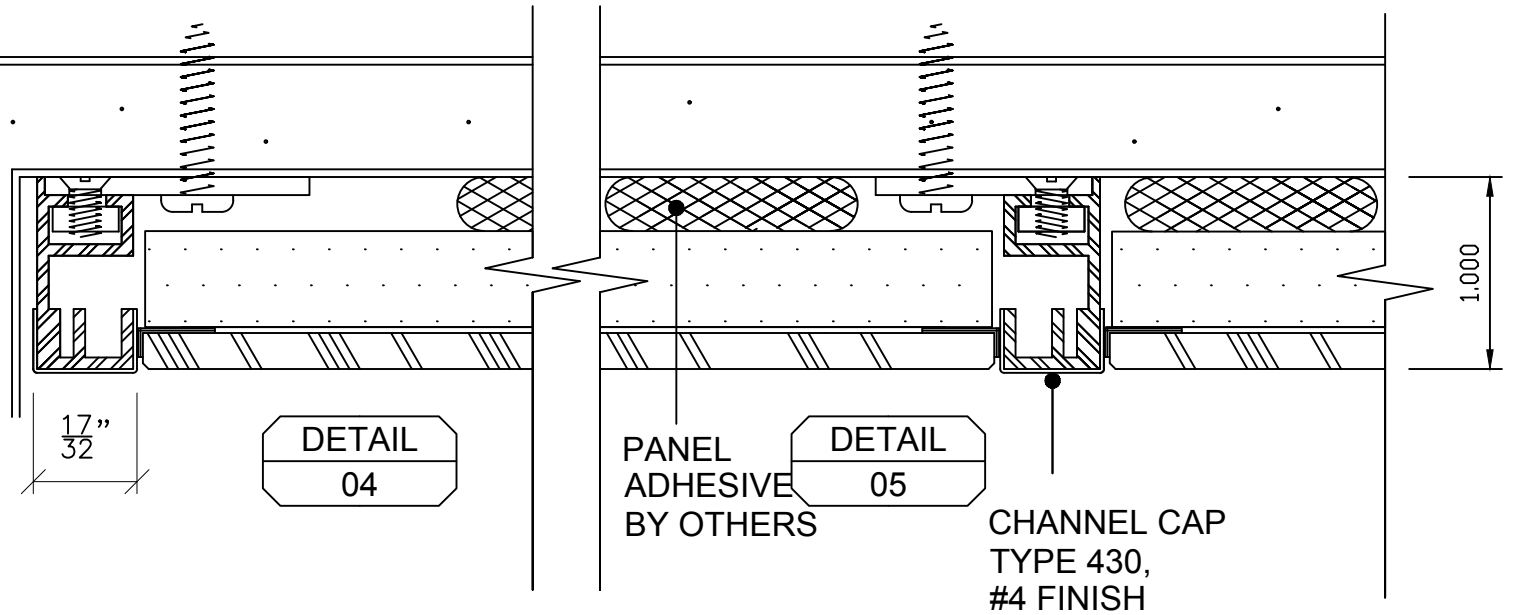
**SYSTEM II  
SERIES-500-EX  
EXTENDED**

FULLER PHOENIX ARCHITECTURAL PRODUCTS



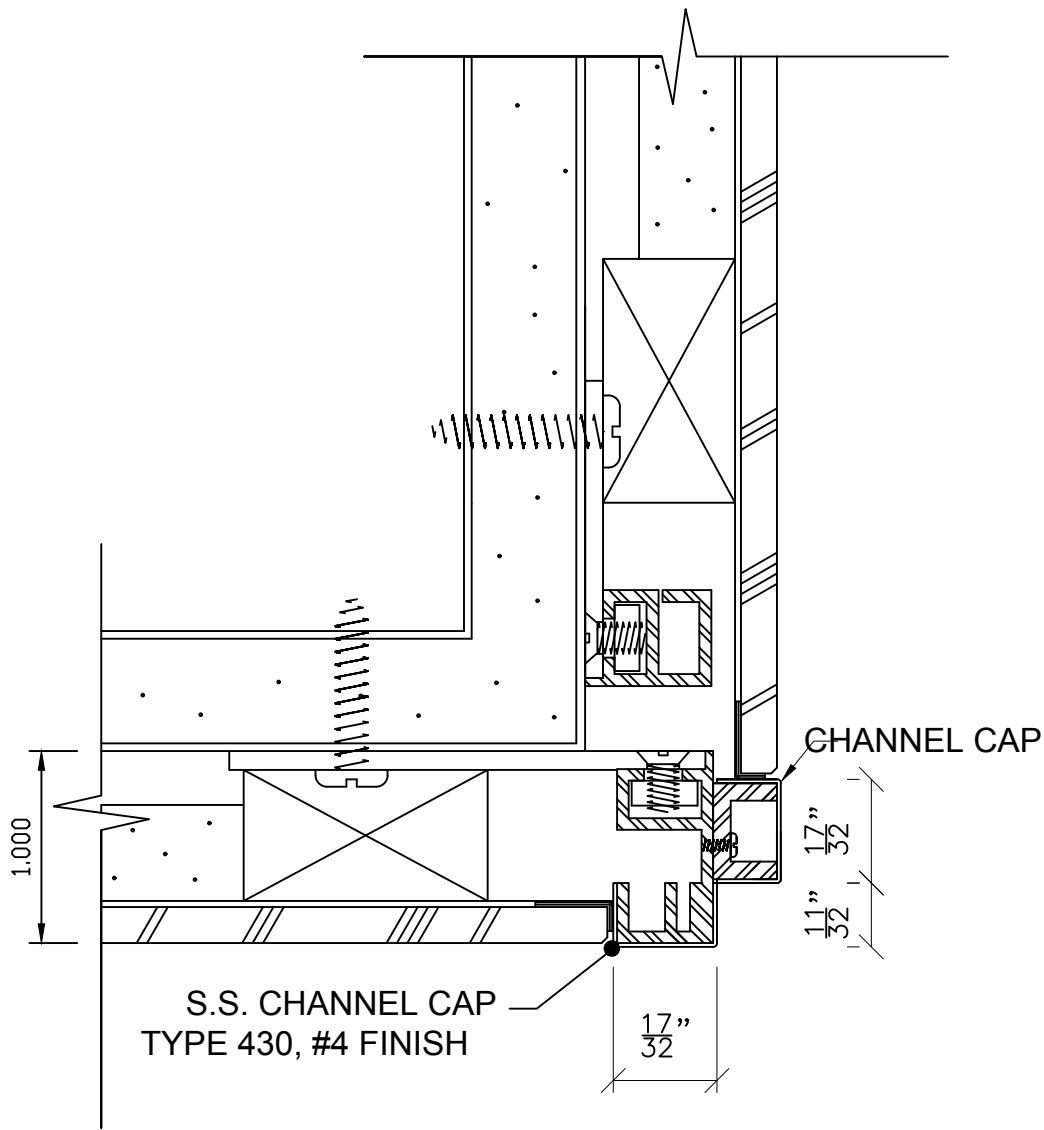
FPX 2SY500 EXTRUSION  
WITH CHANNEL CAP  
SS OR BRASS

**SYSTEM II SERIES 500**  
**FPX 1/2" - 17/32" PROFILE**  
**EXTRUSIONS FULL SIZE**

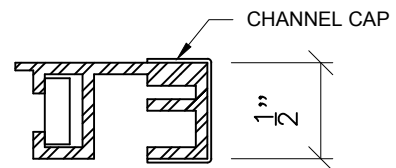


FPX 2SY500 EXTRUSION  
WITH CHANNEL CAP  
SS OR BRASS

**SYSTEM II SERIES 500**  
**FPX 1/2" - 17/32" PROFILE**  
**EXTRUSIONS FULL SIZE**

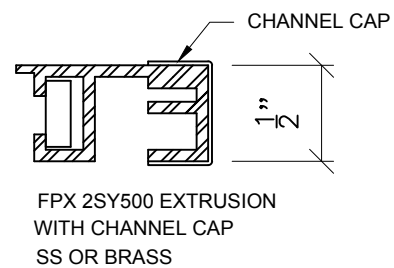
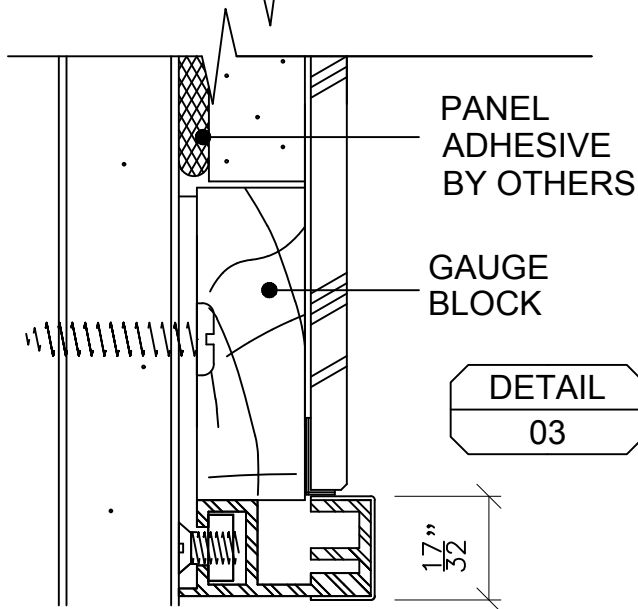
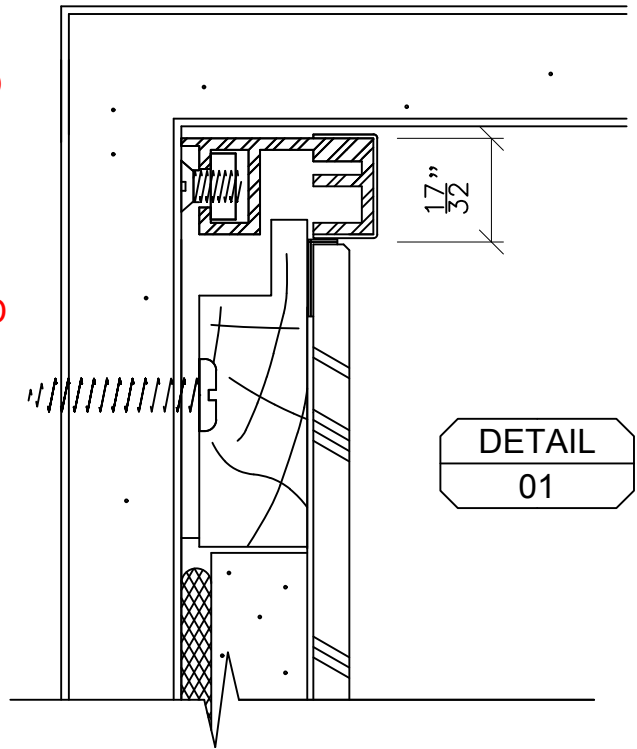
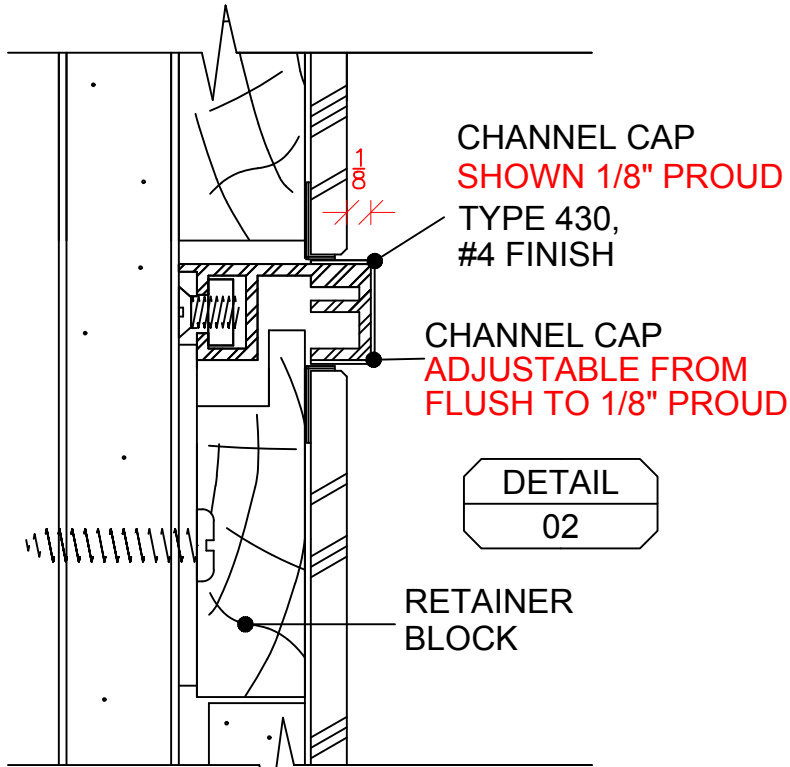


DETAIL  
A

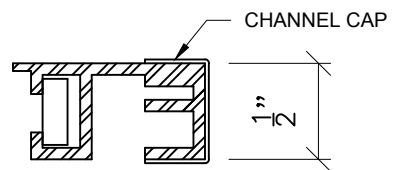
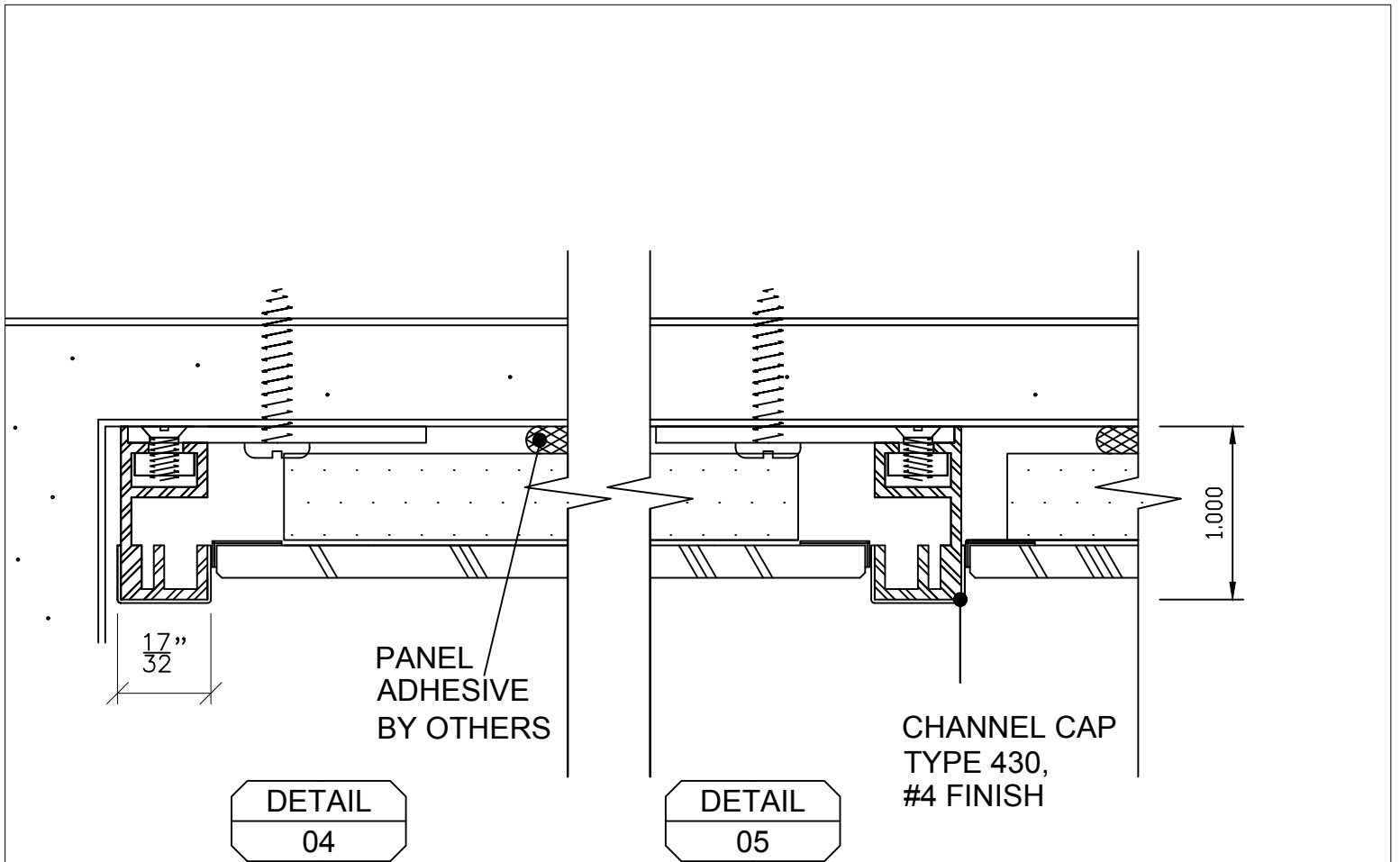


FPX 2SY500 EXTRUSION  
WITH CHANNEL CAP  
SS OR BRASS

**SYSTEM II SERIES 500**  
**FPX 1/2" - 17/32" PROFILE**  
**EXTRUSIONS FULL SIZE**

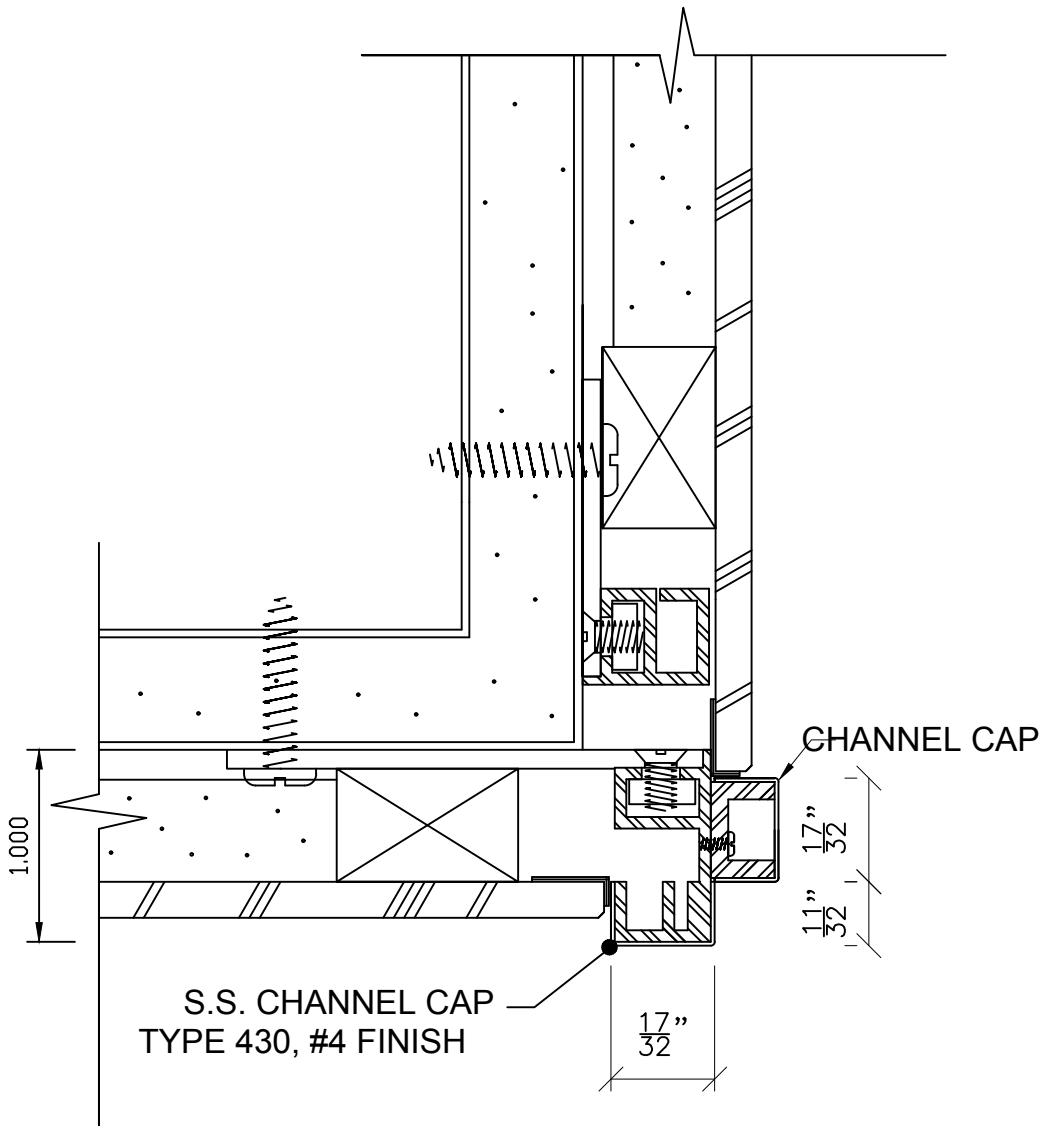


**SYSTEM II SERIES 500-EX**  
**FPX 1/2" - 17/32" PROFILE**  
**EXTRUSIONS FULL SIZE**

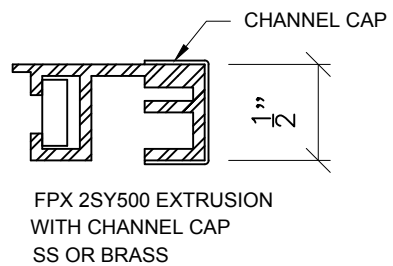


FPX 2SY500 EXTRUSION  
WITH CHANNEL CAP  
SS OR BRASS

**SYSTEM II SERIES 500-EX**  
**FPX 1/2" - 17/32" PROFILE**  
**EXTRUSIONS FULL SIZE**



DETAIL  
A



**SYSTEM II SERIES 500-EX**  
**FPX 1/2" - 17/32" PROFILE**  
**EXTRUSIONS FULL SIZE**