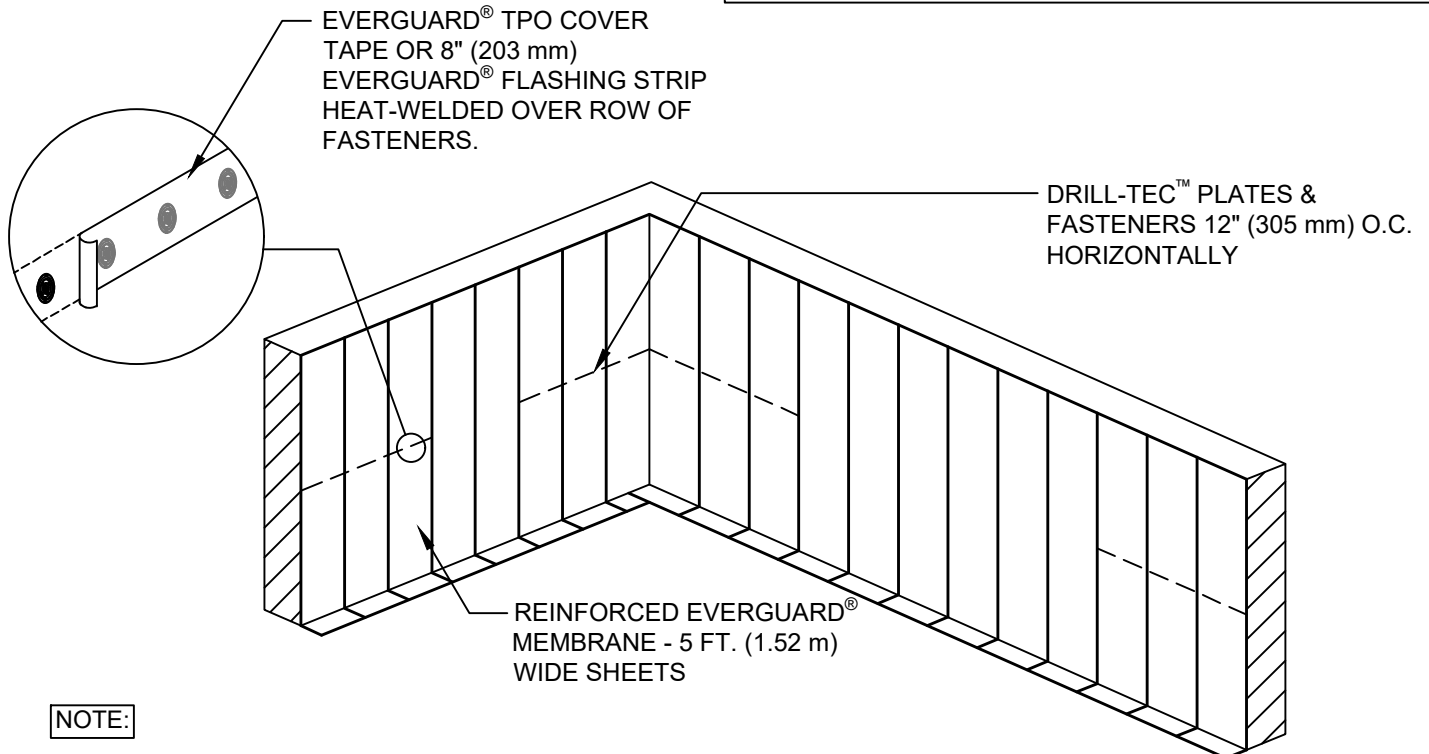


SINGLE-PLY: TPO & PVC

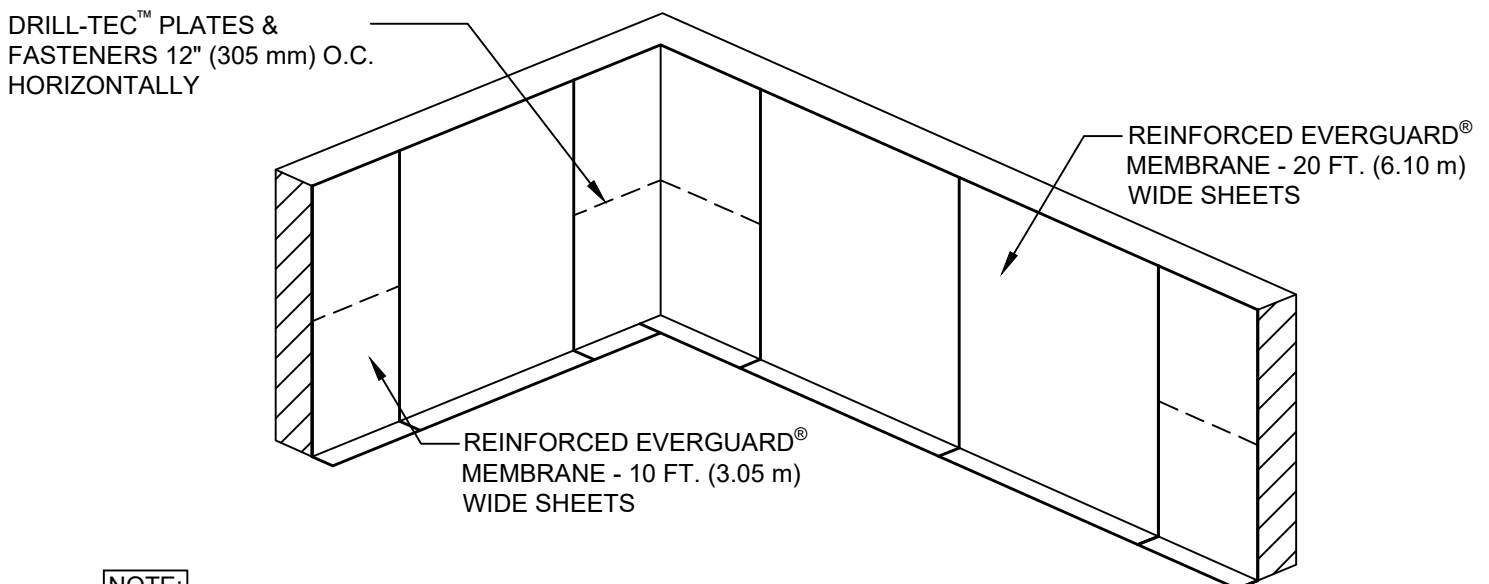
FOR 5' (1.52 m) WIDE SHEETS REFERENCE EVERGUARD® DETAIL 317B



NOTE:

1. FIRST THREE SHEETS FROM THE CORNER AND FIRST THREE SHEETS FROM THE WALL EDGE REQUIRE A ROW OF DRILL-TEC™ PLATES AND FASTENERS 12" O.C. MID WAY UP THE WALL AS SHOWN.

FOR 10' (3.05 m) WIDE SHEETS REFERENCE EVERGUARD® DETAIL 317A



NOTE:

1. FIRST SHEET FROM THE CORNER AND FIRST SHEET FROM THE WALL EDGE REQUIRE A ROW OF DRILL-TEC™ PLATES AND FASTENERS 12" O.C. MID WAY UP THE WALL AS SHOWN. CORNER AND EDGE SHEETS ARE 10' (3.05 m) ALL SHEETS IN BETWEEN ARE 20' (6.10 m) WIDE.

GAF

HIGH WALL FLASHING CORNER AND EDGE REINFORCEMENT

DRAWING #
317E

THIS DETAIL APPLIES TO:
ALL SYSTEMS

ISSUE / REVISION DATE
8/24/20

SCALE
N.T.S.

LEGEND