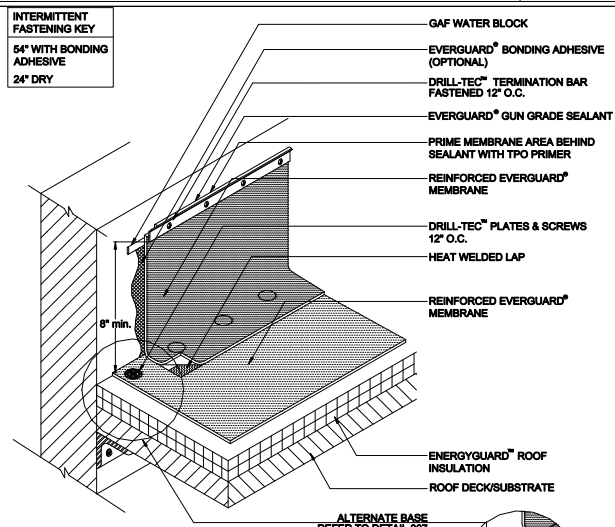


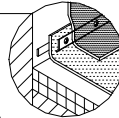
**15 YEAR MAX
GUARANTEE**

**INTERMITTENT
FASTENING KEY**
54" WITH BONDING
ADHESIVE
24" DRY



NOTE:

1. STONE/PAVER BALLAST (NOT SHOWN) REQ'D FOR BA SYSTEMS.
2. PLATES & SCREWS 6" O.C. REQ'D FOR BA SYSTEMS.
3. INCREASED FASTENING TO 6" O.C. MAY BE REQUIRED TO KEEP CONSTANT COMPRESSION OF BAR TO WALL.
4. FOR INSULATION THICKNESS GREATER THAN 8" CONTACT GAFMC CONTRACTOR SERVICES FOR ALTERNATE MEMBRANE ATTACHMENT REQUIREMENTS. FOR ALTERNATE ATTACHMENT REQUIREMENTS, THESE METHODS MAY INCLUDE THE USE OF A HARD BOARD COVERING THE ASSEMBLY.
5. APPLY EVERGUARD® TPO AND PVC CUT EDGE SEALANT TO ALL CUT REINFORCED TPO AND PVC EDGES (REFER TO DETAIL MAFA/BA 115).



 <small>www.gaf.com</small> 1301 Alpha Rd. Wayne, NJ 07470	 PARAPET WALL & CURB SERIES	WALL/CURB FLASHING WITH TERMINATION BAR DETAIL		DRAWING # 302	SYSTEM MAFA/BA
		SCALE N.T.S.	INCHES / METRIC GAGE 7-01-11		