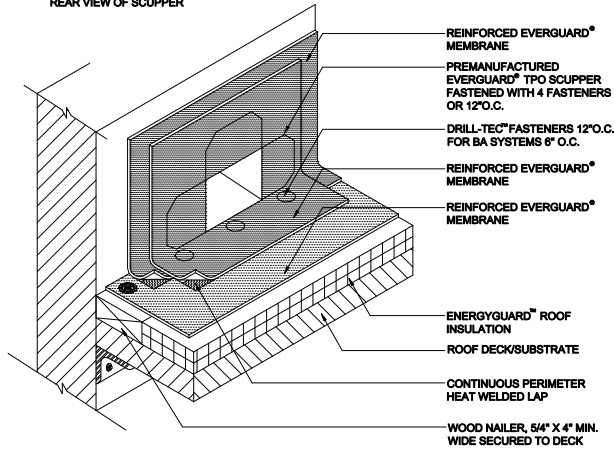


EVERGUARD® WATER BLOCK APPLIED BEFORE SCUPPER INSTALLATION

REAR VIEW OF SCUPPER



- REINFORCED EVERGUARD® MEMBRANE
- PREMANUFACTURED EVERGUARD® TPO SCUPPER FASTENED WITH 4 FASTENERS OR 12" O.C.
- DRILL-TEC® FASTENERS 12" O.C. FOR BA SYSTEMS 6" O.C.
- REINFORCED EVERGUARD® MEMBRANE
- REINFORCED EVERGUARD® MEMBRANE
- ENERGYGUARD® ROOF INSULATION
- ROOF DECK/SUBSTRATE
- CONTINUOUS PERIMETER HEAT WELDED LAP
- WOOD NAILER, 5/4" X 4" MIN. WIDE SECURED TO DECK

NOTE:

1. DETAIL TO BE USED IN CONJUNCTION WITH STANDARD GUIDE SPECIFICATION CONTAINING REQUIREMENTS FOR NAILERS, INSULATION ETC.
2. APPLY EVERGUARD® TPO CUT EDGE SEALANT TO ALL CUT REINFORCED TPO EDGES (REFER TO DETAIL MA/FA/BA 115).

 <small>www.gaf.com</small> 1301 Alpha Rd. Wayne, NJ 07470	 PARAPET WALL & CURB SERIES	SCUPPER -PREMANUFACTURED	DRAWING #	SYSTEM
		TPO ONLY	324	MA/FA/BA
			SCALE	ISSUE/REVISION DATE
			N.T.S.	7-01-11