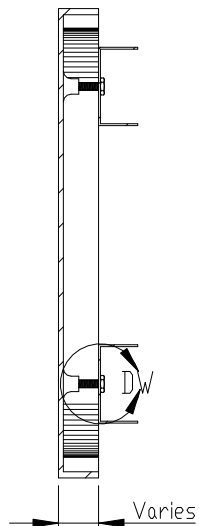
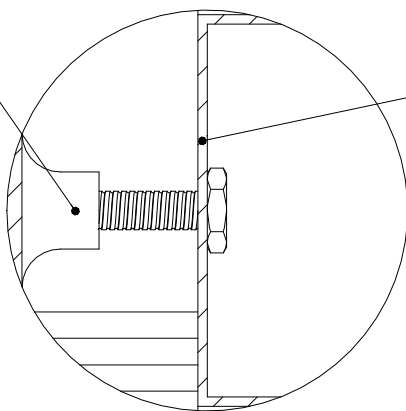


FRONT VIEW II SCALE 1:5
Stud Boss (size varies)



SECTION VIEW A-A II SCALE 1:5



DETAIL DW II SCALE 1:1

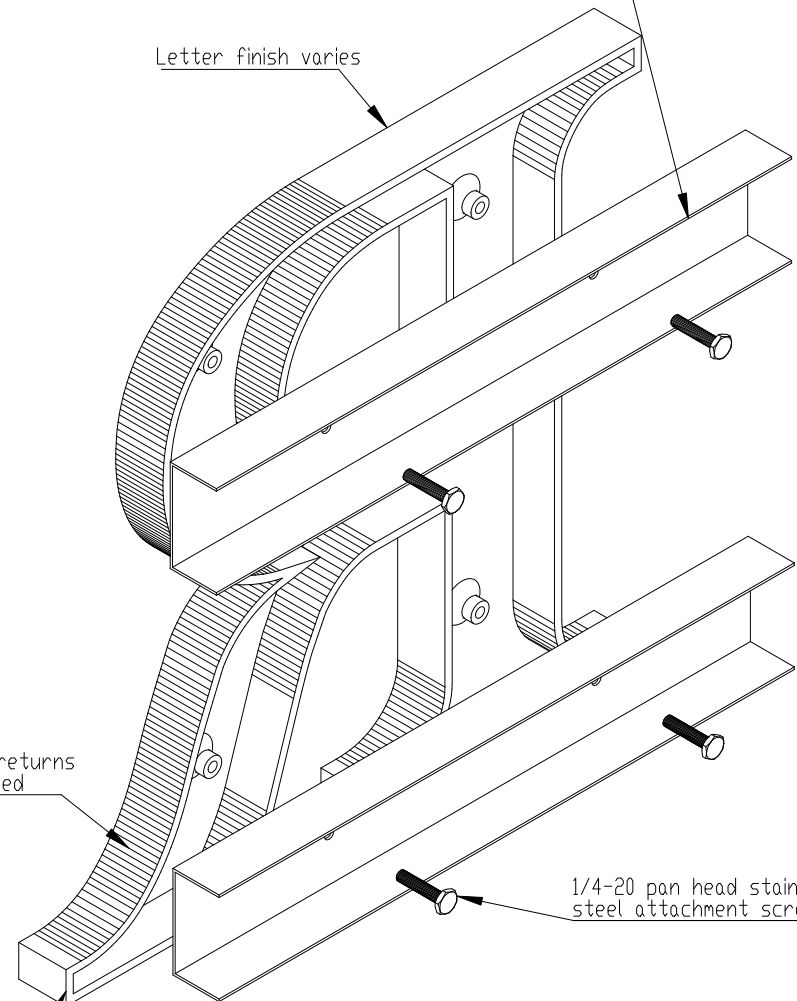
C-shape rail (size varies)
Painted or anodized
6063-T2 extruded-aluminum - 1/8" wall

Standard returns
Bead blasted

0 - 7 return draft - thickness/depth
- varies by style and height

Customer supplied mounting hole
& hardware for mounting rail to wall

Letter finish varies



ISOMETRIC BACK VIEW II SCALE 1:3

1/4-20 pan head stainless
steel attachment screws

NOTES:

- Letters 4"-24" mounted by word, max. 96" rails
- Standard catalog styles or customer per vector art. Flat faced/round/prismatic profile options. Typical 3/16" - 1/4" wall thickness on hollow back letters/logos.
- Letters or logos, standard or custom
- C-Channel (rail)
- 1/2" deep x 1" or 1 1/2" wide x 96" long, painted or anodized
- 1" deep x 2" or 3" wide x 96" long, painted or anodized
- Rails pre-assembled for fit, larger letters may ship loose
- Rail Mounting
- C-channel rails are designed to be mounted to load bearing structures, holes and location to be determined by installer (rail mounting hardware not included)



TITLE: CAST METAL DOUBLE RAIL MOUNT			
MATERIAL: ALUMINUM OR BRONZE		PRODUCT TYPE: CAST METAL	
DWG NO. CAST40	REV 10/27/16	SCALE: AS INDICATED	SHEET 1 OF 1