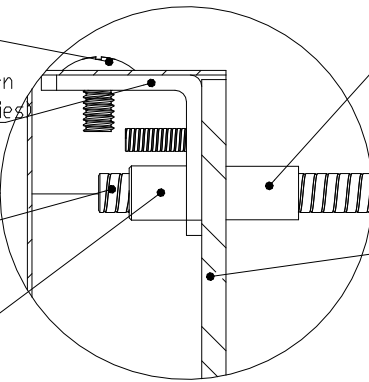
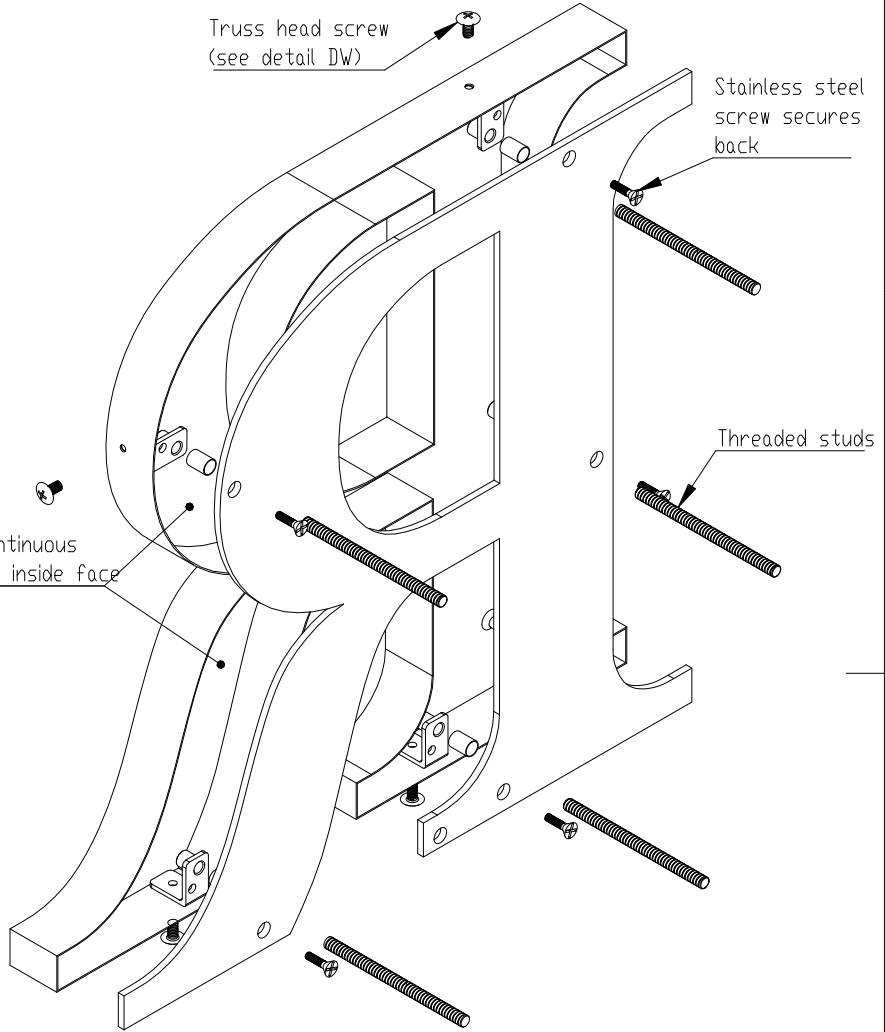
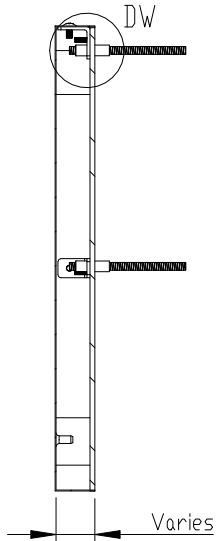
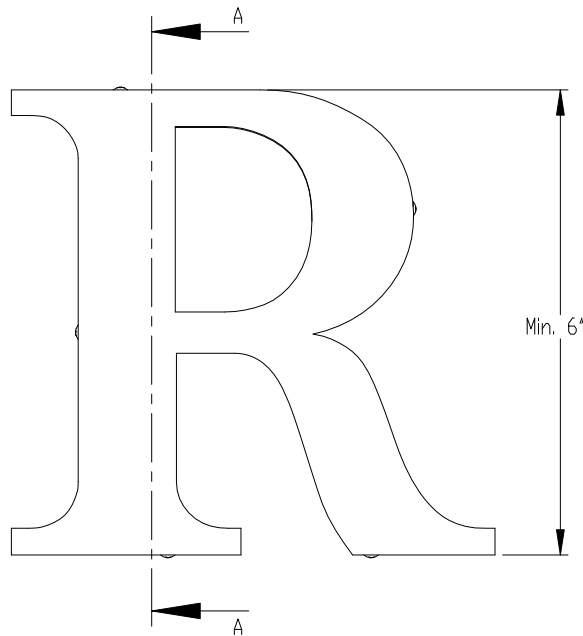


PRODUCT CONSTRUCTION EXAMPLE



LETTER SIZE	MIN. DEPTH	STUD	BRACKET
6" to 24"	1.0"	10 - 24	Medium
over 24"	1.75"	1/4 - 20	Large

- Truss head screw secures can
- "L" bracket secured to return w/truss head screw (size varies)
- Stainless steel Mounting Stud Size varies
- Threaded Stud Boss Size varies by bracket
- Optional spacer sleeve (size varies)
- Removable clear or light diffused Lexan

- Truss head screw (see detail DW)
- Stainless steel screw secures back
- Threaded studs
- Lead-free continuous sealed edge - inside face

- NOTES:**
- Tie backs required (not supplied) on letters > 8" high
- BACK OPTIONS**
- Clear Lexan: 6-24" high - 0.118 thick, over 24" - 0.236" thick
 - Light diffused Lexan: 0.177" thick
- MATERIAL OPTIONS**
- Standard - 304 prefinished stainless steel
 - Optional - 316 prefinished stainless steel (more corrosion resistant)
 - 304 prefinished stainless with titanium coating



TITLE: METAL FACE - WITH BACK FOR LEDS REMOVABLE CAN MOUNT			
MATERIAL: STAINLESS STEEL		PRODUCT TYPE: FABRICATED METAL	
DWG NO. FABL200	REV 12/2/16	SCALE: AS INDICATED	SHEET 1 OF 1