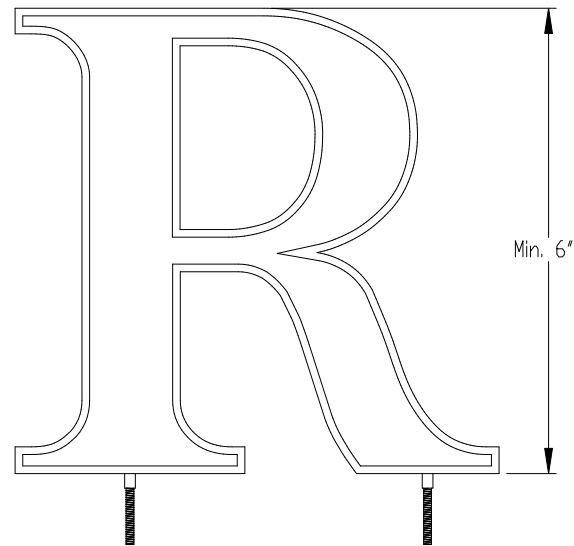
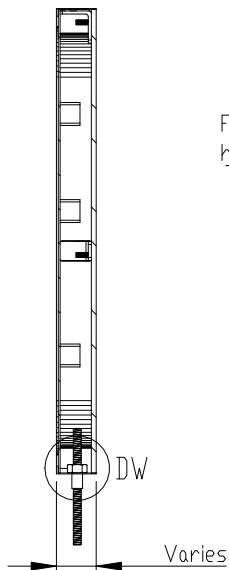


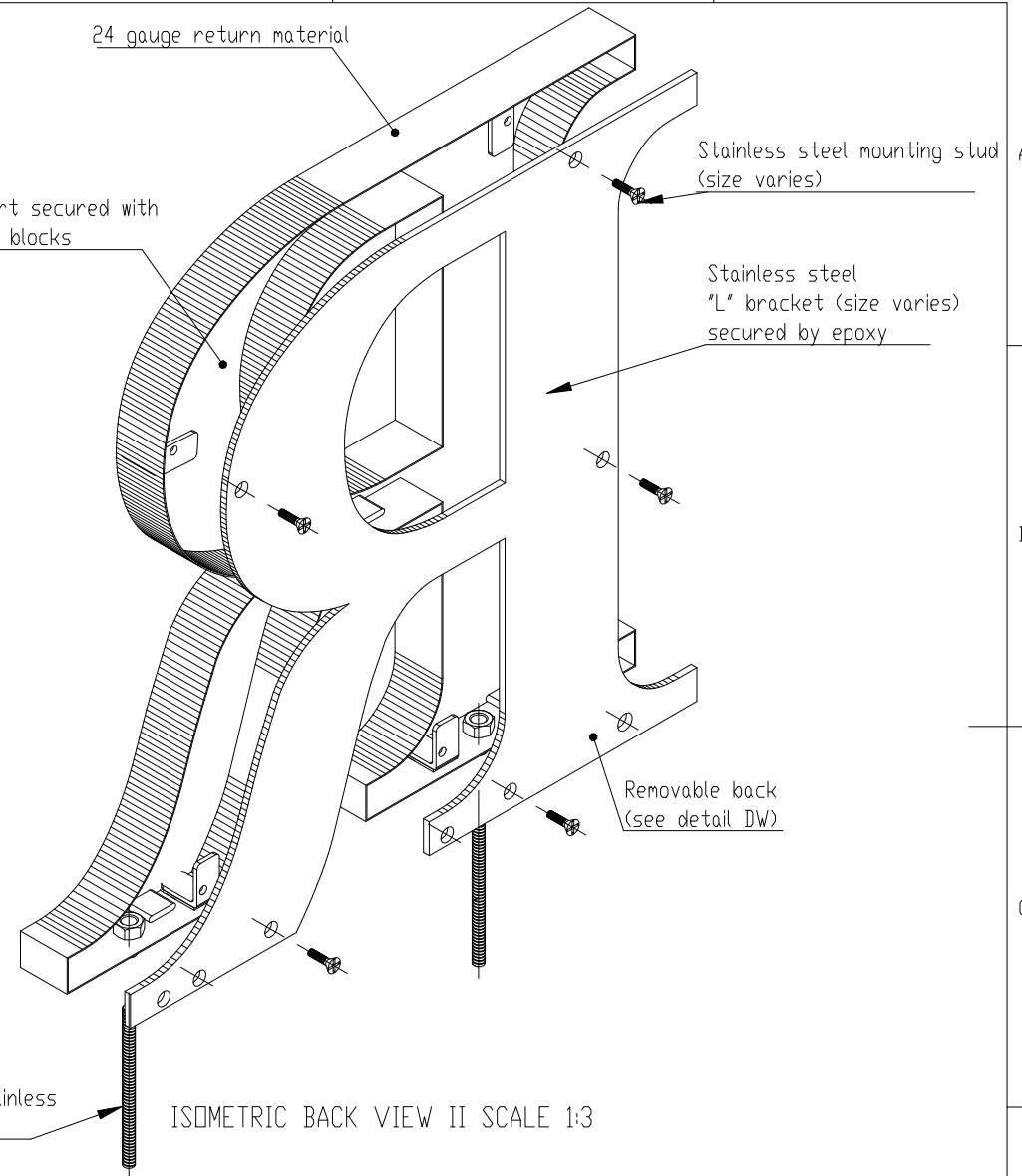
PRODUCT CONSTRUCTION EXAMPLE



FRONT VIEW II SCALE 1:5



SECTION A-A II SCALE 1:5



ISOMETRIC BACK VIEW II SCALE 1:3

Face insert secured with hold-down blocks (see table)

Removable clear or light diffused Lexan or stainless steel back. Requires tie back with letters over 8" (not included)

Stainless steel Hex nut (size varies) Soldered to inside of return

Optional spacer sleeve (Size varies)

DETAIL DW II SCALE 1 : 1

NOTES:

- Tie backs required (not supplied) on letters > 8" high

BACK OPTIONS

- Clear Lexan: 6-12" high - 0.118 thick.
- Light diffused Lexan: 0.177" thick
- Stainless steel - same gauge as face

MATERIAL OPTIONS

- Standard - 304 prefinished stainless steel
- Optional - 316 prefinished stainless steel (more corrosion resistant)
- 304 prefinished stainless with titanium coating

INSERT OPTIONS	
Stainless steel	18-20 gauge up to 24" high
Acrylic	3/16" thick - up to 36" high



TITLE: CUT OUT FACE WITH INSERT - WITH BACK FOR LEDS - BOTTOM STUD MOUNT

MATERIAL: STAINLESS STEEL

PRODUCT TYPE: FABRICATED METAL