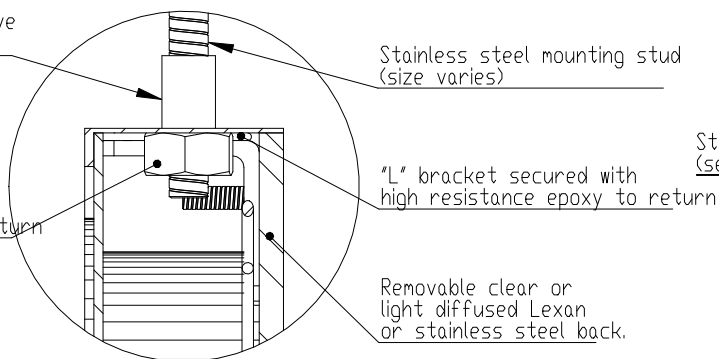
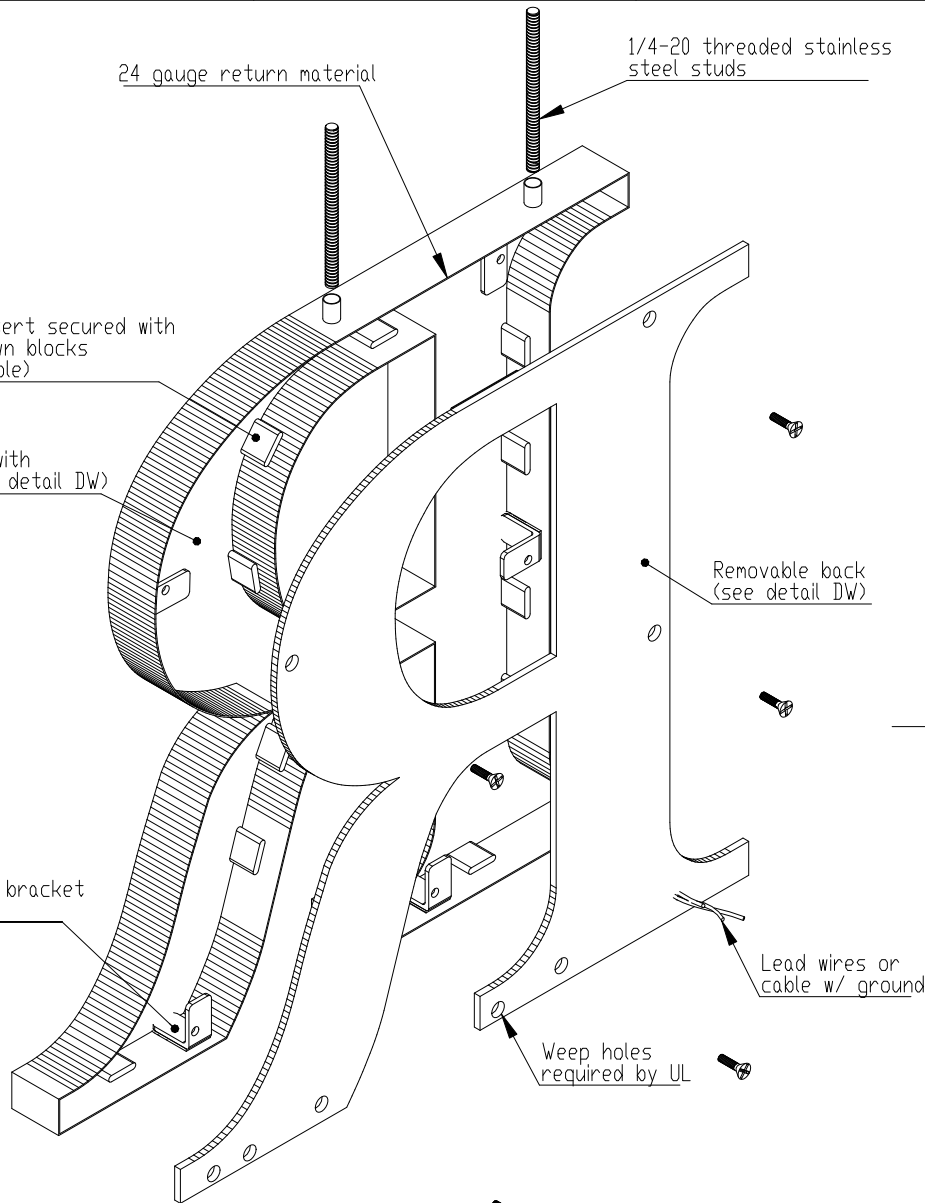
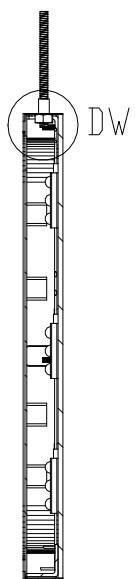
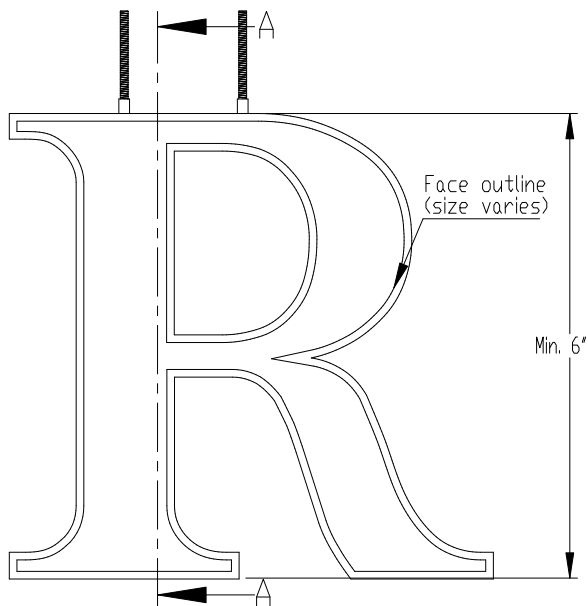


PRODUCT CONSTRUCTION EXAMPLE



- NOTES:
- Minimum 1" stroke, min. 2" deep
 - This mounting option is recommended for interiors only
 - Tie backs required (not supplied) on letters > 8" high

- BACK OPTIONS
- Clear Lexan: 6-12" high - 0.118 thick
 - Light diffused Lexan: 0.177" thick
 - Stainless steel - same gauge as face

- MATERIAL OPTIONS
- Standard - 304 prefinished stainless steel
 - Optional - 316 prefinished stainless steel (more corrosion resistant)
 - 304 prefinished stainless with titanium coating

INSERT OPTIONS	
Stainless steel	18-20 gauge up to 24" high
Acrylic	3/16" thick - up to 36" high



TITLE: FACE LIT - WITH LEDS - TOP STUD	
MATERIAL: STAINLESS STEEL	PRODUCT TYPE: FABRICATED METAL
DWG NO. FABL220L	REV 12/3/16
SCALE: AS INDICATED	SHEET 1 OF 1