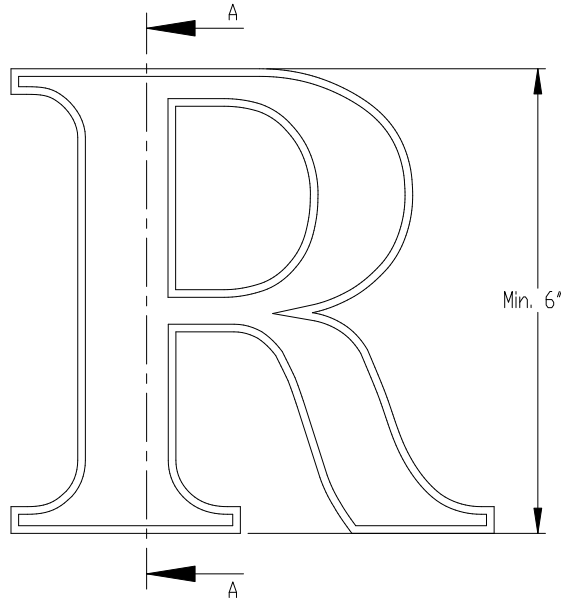
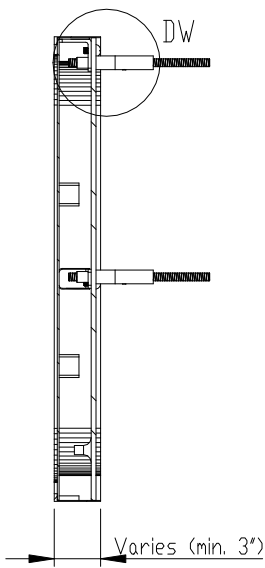


PRODUCT CONSTRUCTION EXAMPLE

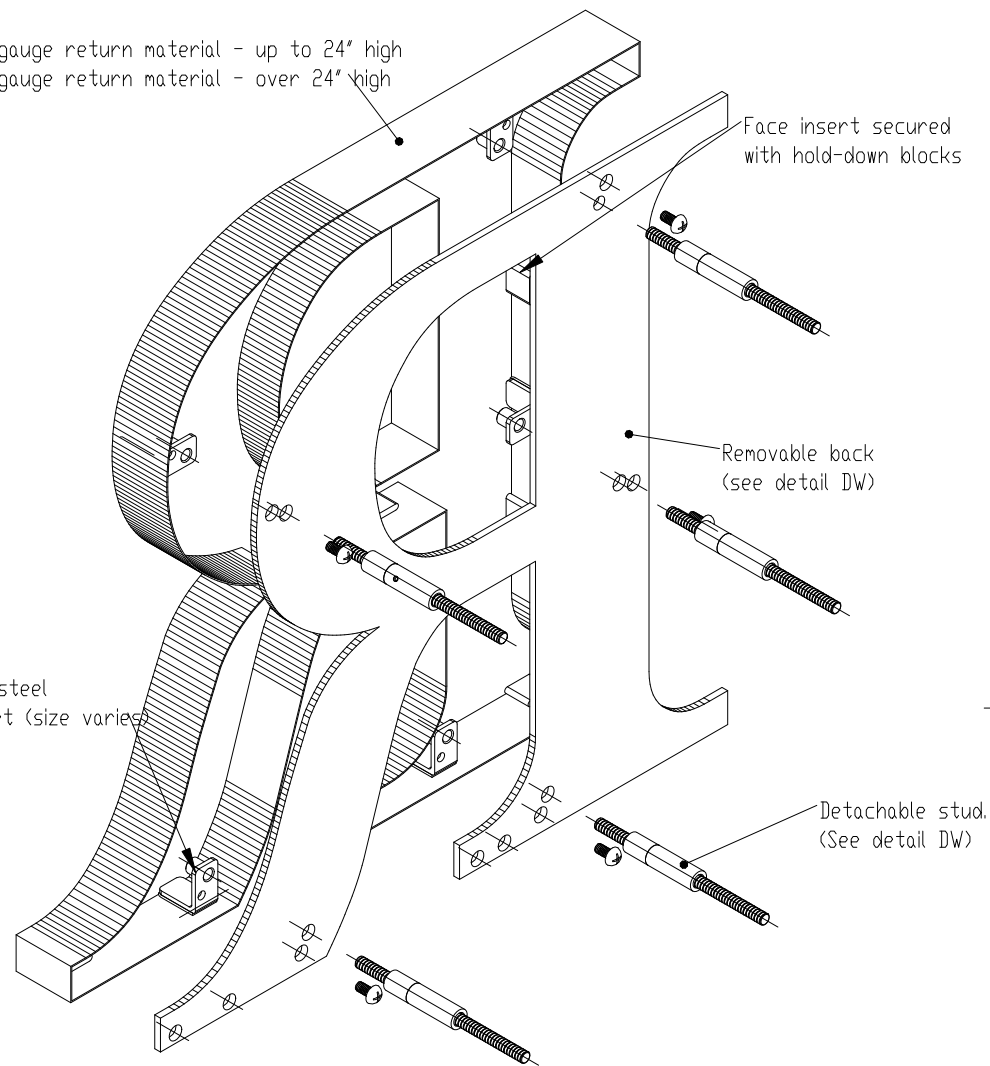


FRONT VIEW II SCALE 1:5



SECTION A-A II SCALE 1:5

24 gauge return material - up to 24" high
22 gauge return material - over 24" high



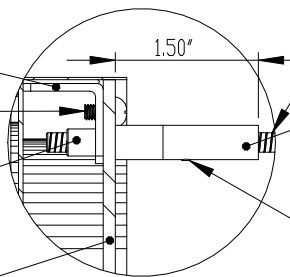
ISOMETRIC BACK VIEW II SCALE 1:3

"L" bracket secured with high resistance epoxy to return

Back secured with stainless steel pan-head screw

Threaded stud boss size varies by bracket

Removable clear or light diffused Lexan or stainless steel back.



DETAIL DW II SCALE 1:2

Stainless steel Mounting Stud Size varies (see table)

Clear anodized aluminum detachable stud.

Set screw loosened with Allen wrench (wrench included)

Stainless steel "L" bracket (size varies)

Face insert secured with hold-down blocks

Removable back (see detail DW)

Detachable stud. (See detail DW)

INSERT OPTIONS

| | |
|-----------------|----------------------------------|
| Stainless steel | 18-20 gauge up to 24" high |
| | 16-18 gauge over 24" to 36" high |
| Acrylic | 3/16" thick - up to 36" high |

| LETTER SIZE | MIN. DEPTH | STUD | BRACKET |
|-------------|------------|----------|---------|
| 6" to 24" | 1.0" | 10 - 24 | Medium |
| over 24" | 1.75" | 1/4 - 20 | Large |

NOTES:

- Metal back - Pan-head screw slightly recessed.
- Lexan back - 6 - 24" 0.118" thick, over 24" 0.236" thick
- Tie back required (not supplied) on letters > 8" high

MATERIAL OPTIONS

- Standard - 304 prefinished stainless steel
- Optional - 316 prefinished stainless steel (more corrosion resistant)
- 304 prefinished stainless with titanium coating



BACK OPTIONS

- Clear Lexan: 6-12" high - 0.118 thick
- Light diffused Lexan: 0.177" thick
- Stainless steel - same gauge as face

TITLE: CUT OUT FACE WITH INSERT - WITH BACK FOR LEDS - DETACHABLE STUD MOUNT

MATERIAL: STAINLESS STEEL

PRODUCT TYPE: FABRICATED METAL