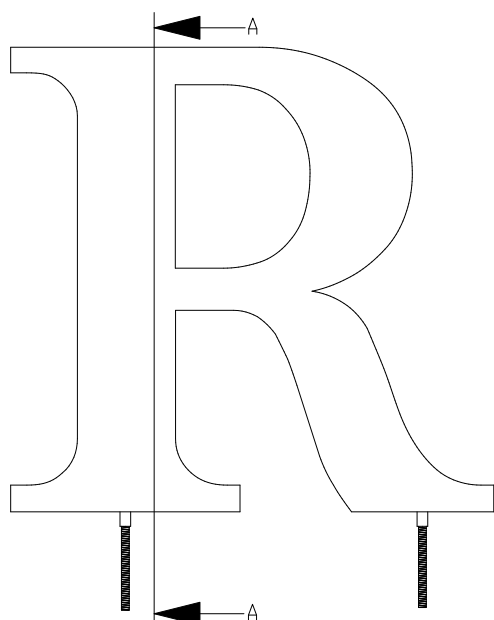
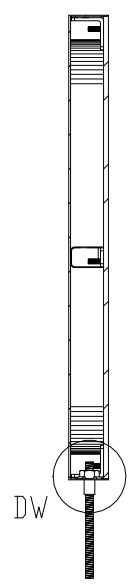


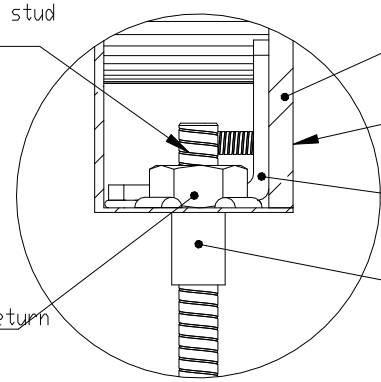
PRODUCT CONSTRUCTION EXAMPLE



FRONT VIEW II SCALE 1:5



SECTION VIEW A-A II SCALE 1:5



DETAIL DW II SCALE 1:1

Stainless steel mounting stud (size varies)

Stainless steel Hex nut (size varies) Soldered to inside of return

Removable clear or light diffused Lexan or stainless steel back. Requires tie back with letters over 8" (not included)

Flush back secured with stainless steel screw w/lexan back

Nut or threaded "L" bracket secured with high resistance epoxy

Optional spacer sleeve (size varies)

18 gauge face material - All strokes

lead free continous solder inside face

22-24 gauge return material

Stainless steel nut or threaded "L" bracket (size varies)

Tie back hole

Removable back (see detail DW)

3/8"-16 up to 18" high
1/2" over 18" high

ISOMETRIC BACK VIEW II SCALE 1:3



- BACK OPTIONS**
- Clear Lexan: 6-12" high - 0.118 thick
 - Light diffused Lexan: 0.177" thick
 - Stainless steel - same gauge as face

- MATERIAL OPTIONS**
- Standard - 304 prefinished stainless steel
 - Optional - 316 prefinished stainless steel (more corrosion resistant)
 - Optional - 304 prefinished stainless with titanium coating

TITLE: METAL FACE WITH BACK - BOTTOM STUD MOUNT	
MATERIAL: STAINLESS STEEL	PRODUCT TYPE: FABRICATED METAL
DWG NO. FABL60	REV 11/21/16
SCALE: AS INDICATED	SHEET 1 OF 1