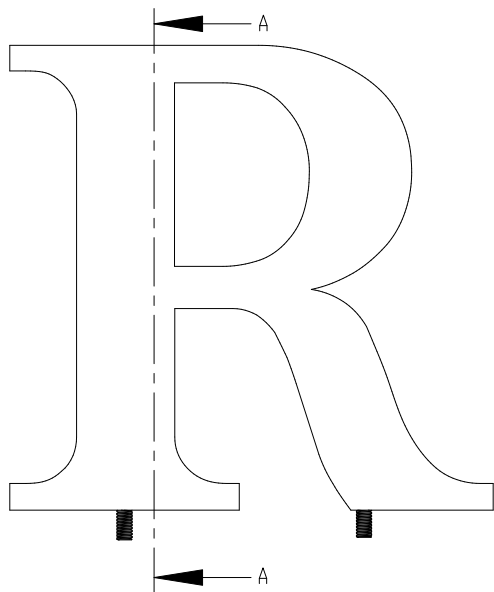
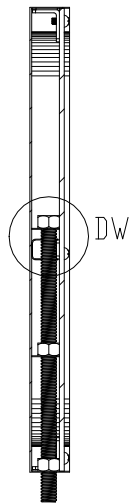


PRODUCT CONSTRUCTION EXAMPLE



FRONT VIEW II SCALE 1:5



SECTION VIEW A-A II SCALE 1:5

18 gauge face material - 12" to 24" high - All strokes  
 18 gauge face material - over 24" high - up to 8" stroke  
 16 gauge face material - over 24" high - over 8" stroke

Lead free continous solder inside face

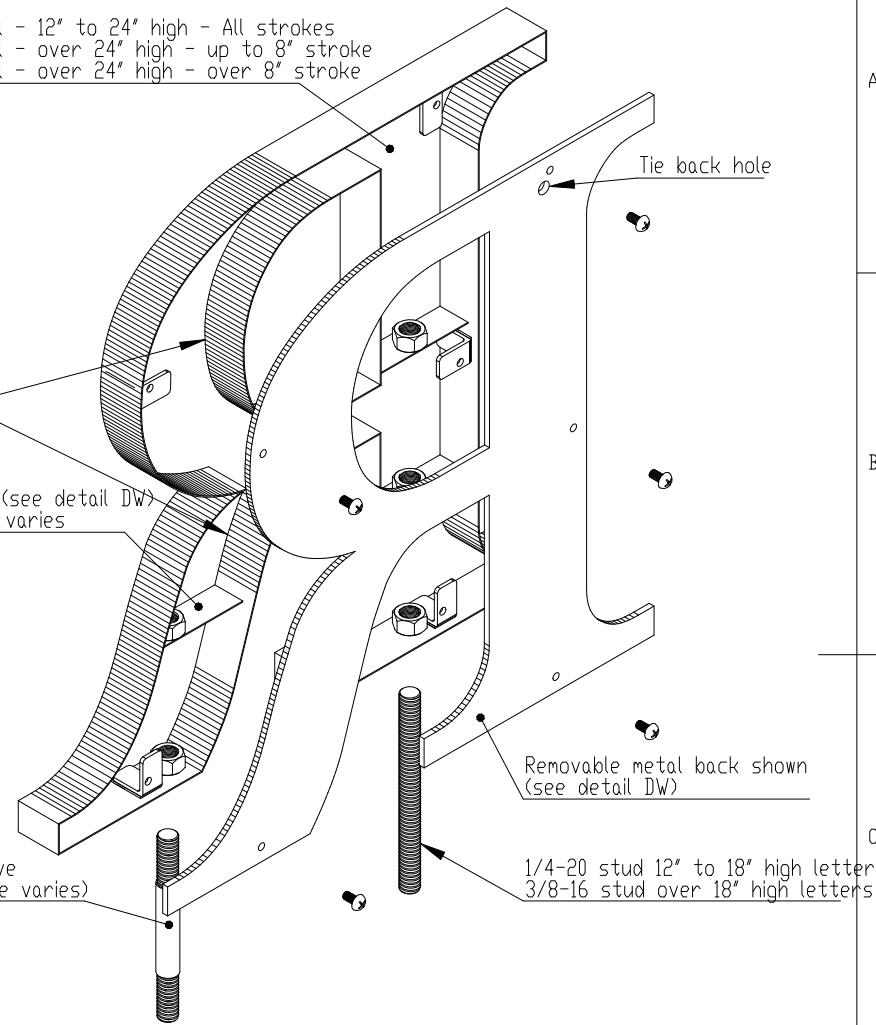
Stainless steel strap (see detail DW)  
 Location and quantity varies

Spacer sleeve  
 Optional (size varies)

Tie back hole

Removable metal back shown  
 (see detail DW)

1/4-20 stud 12" to 18" high letters  
 3/8-16 stud over 18" high letters



ISOMETRIC BACK VIEW II SCALE 1:3

Stainless steel  
 Hex nut (size varies)  
 Soldered to strap

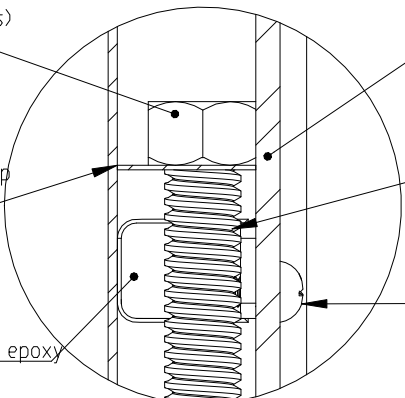
Removable clear or light diffused Lexan  
 or stainless steel back.  
 Requires tie back (not included)

16 gauge 2B  
 Stainless steel strap  
 Soldered to return

Stainless steel mounting stud  
 (size varies)

"L" bracket secured  
 with high resistance epoxy

Stainless steel pan-head screw  
 to secure back (see note)



DETAIL DW II SCALE 1:1

NOTES:

- Metal back - panhead slightly recessed
- Lexan back - flush stainless steel screw

BACK OPTIONS

- Clear Lexan: 12-24" high - 0.118 thick, over 24" - 0.236" thick
- Light diffused Lexan: 0.177" thick
- Stainless steel - same gauge as face

MATERIAL OPTIONS

- Standard - 304 prefinished stainless steel
- Optional - 316 prefinished stainless steel (more corrosion resistant)
- 304 prefinished stainless with titanium coating



TITLE: METAL FACE WITH BACK - ENGINEERED STUD MOUNT	
MATERIAL: STAINLESS STEEL	PRODUCT TYPE: FABRICATED METAL
DWG NO. FABL90	REV 11/21/16
SCALE: AS INDICATED	SHEET 1 OF 1