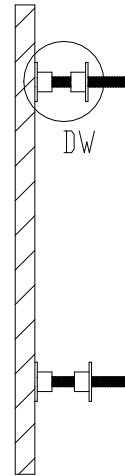
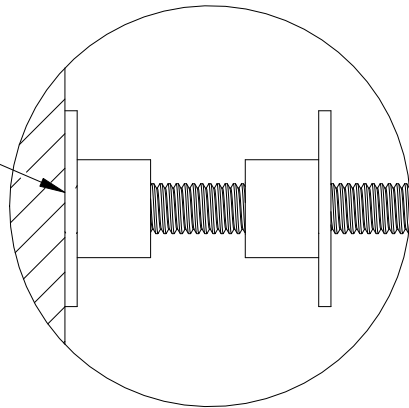


FRONT VIEW II SCALE 1:5



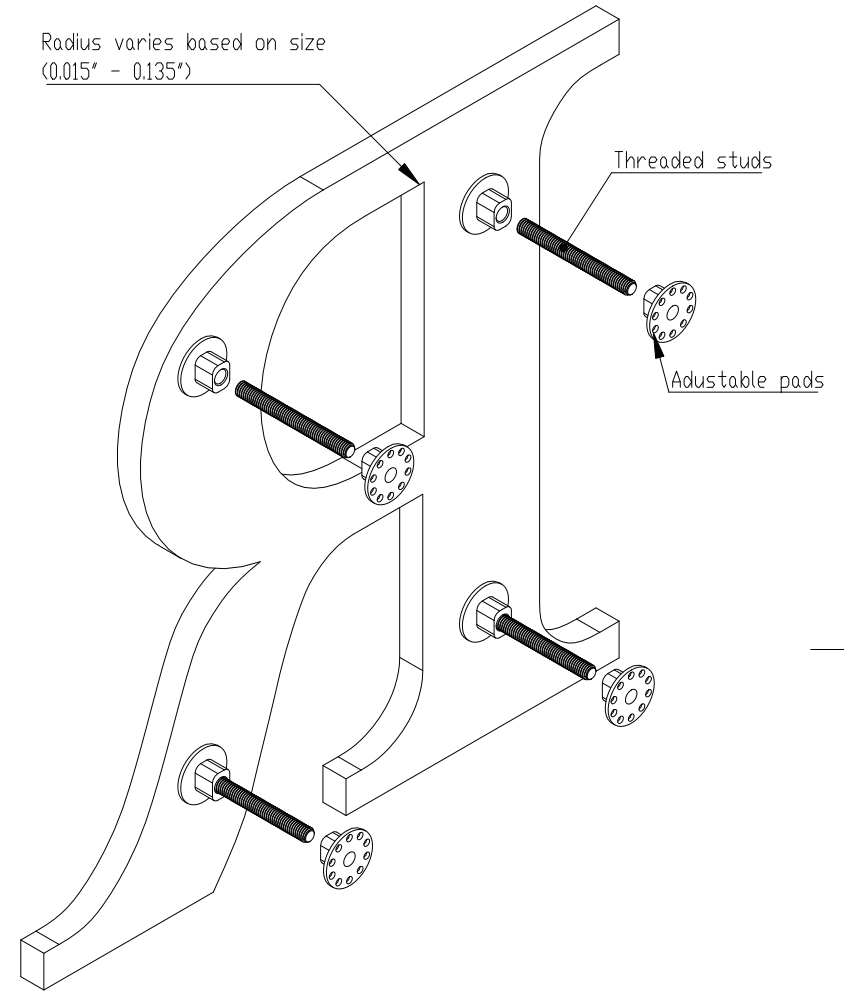
SECTION A-A II SCALE 1:5

Blocks solvent bonded to letter backs



DETAIL DW II SCALE 1:1

Radius varies based on size
(0.015" - 0.135")



ISOMETRIC BACK VIEW II SCALE 1:3

NOTES:

- Minimum 6" high letters
- Combination All mount has stud through pads on both top and bottom mounts.
- Standard Gemini letter styles or per vector art
- Min. 3/8" stroke
- Aluminum 10/24 studs (stainless steel optional)
- Available gauges (1/8", 3/16", 1/4", 3/8", 1/2", 3/4", 1", and 1 1/2" thick)
- Pigmented acrylic or sprayed with acrylic polyurethane paint



TITLE: LASER CUT ACRYLIC - COMBINATION ALL MOUNT			
MATERIAL: IMPACT MODIFIED ACRYLIC		PRODUCT TYPE: PLASTIC LETTERS	
DWG NO. LASR50	REV 09/15/16	SCALE: AS INDICATED	SHEET 1 OF 1