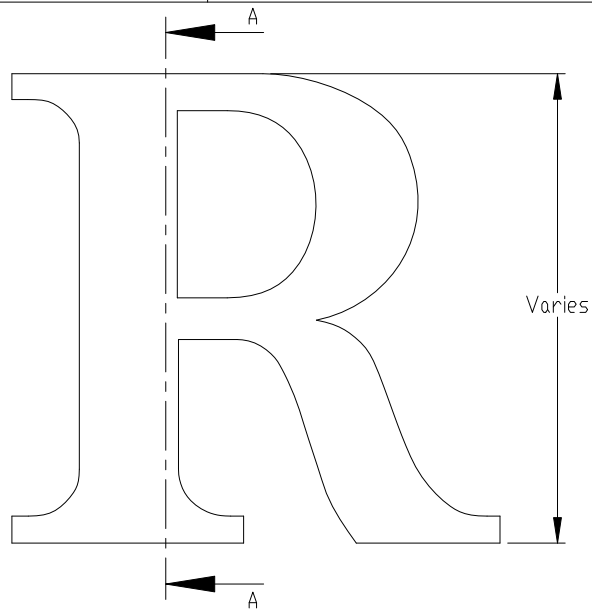
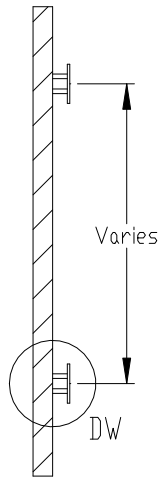


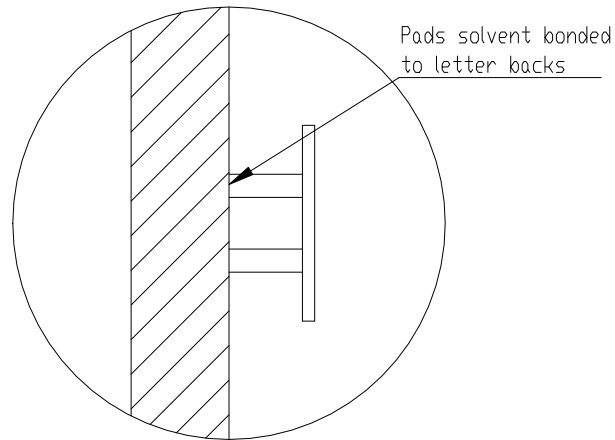
1 2 3 4 5 6



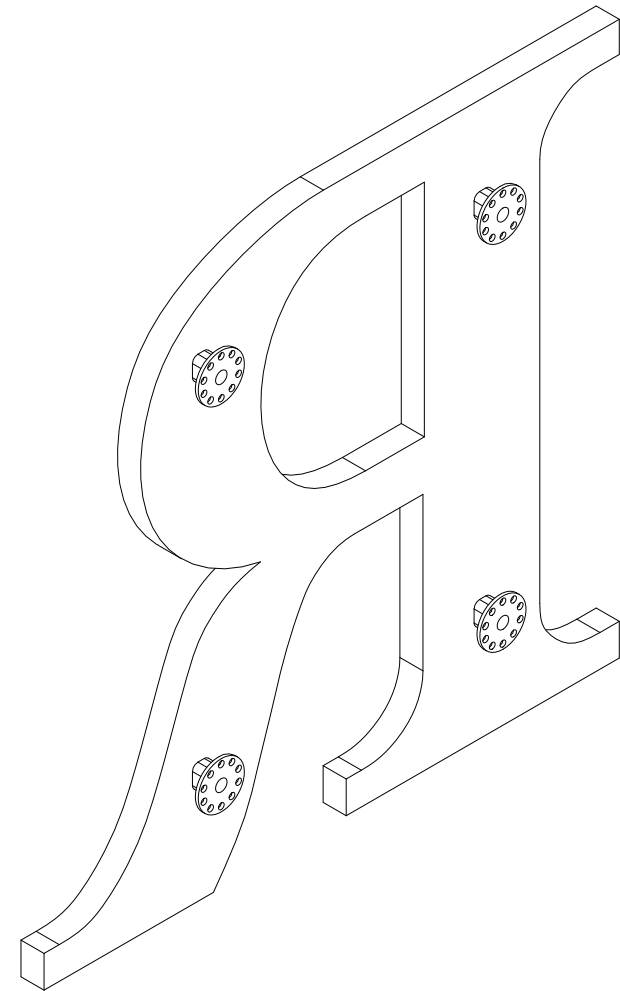
FRONT VIEW II SCALE 1 : 5



SECTION A-A II SCALE 1:5



DETAIL DW II SCALE 1:1



ISOMETRIC BACK VIEW II SCALE 1:3

NOTES:

- Standard Gemini letter styles or per vector art
- Min. 3/8" stroke
- Available gauges (1/8", 3/16", 1/4", 3/8", 1/2", 3/4", 1", and 1 1/2" thick)
- Pigmented or sprayed with acrylic polyurethane paint
- Fixed pads, optional adjustable with more stand-off



TITLE: LASER CUT ACRYLIC - PAD MOUNT			
MATERIAL: IMPACT MODIFIED ACRYLIC		PRODUCT TYPE: PLASTIC LETTERS	
DWG NO. LASR60	REV 09/15/16	SCALE: AS INDICATED	SHEET 1 OF 1

1 2 3 4 5 6

A

B

C

D

A

B

C