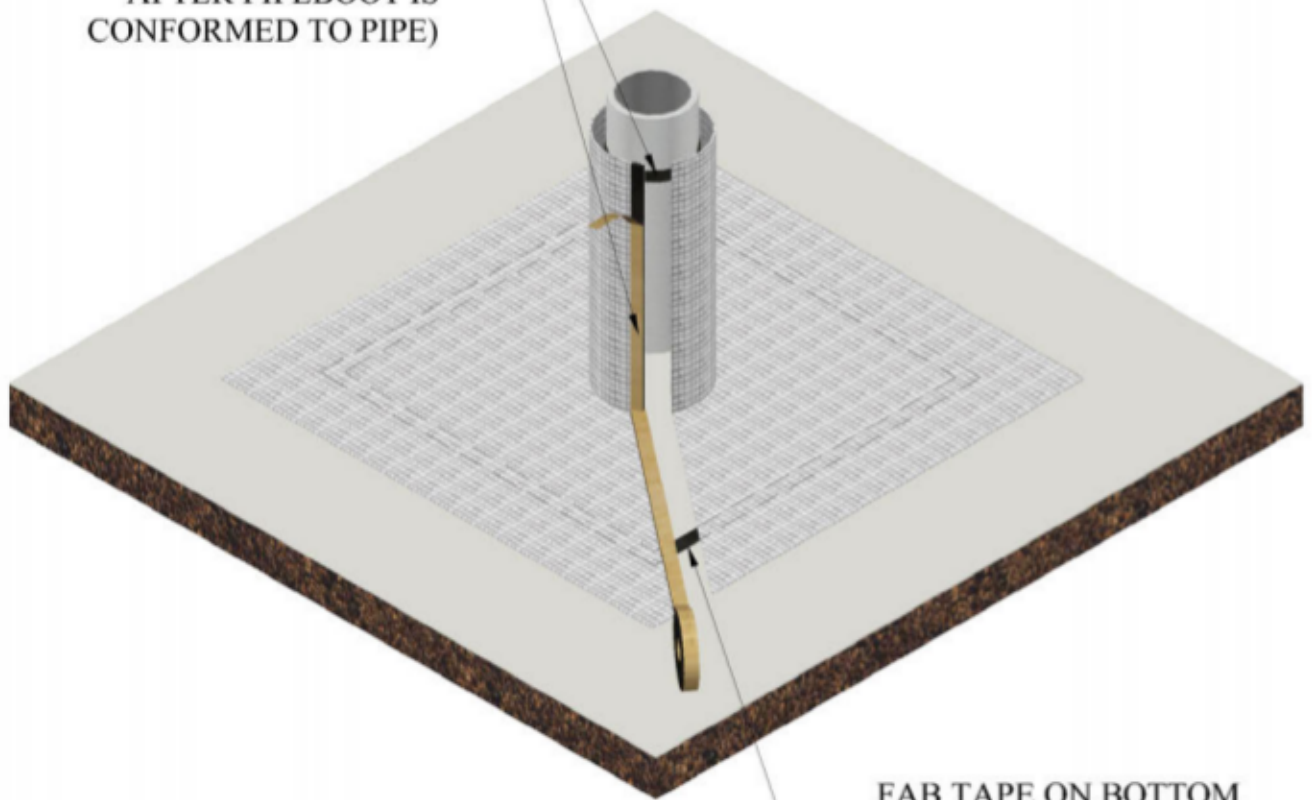


CUSTOM PIPEBOOT INSTALLATION

DWG 2 OF 3

STEP 2
APPLY DOUBLE SIDED FAB
TAPE ALONG CUT EDGE
AND AROUND PIPE BELOW
THE TOP EDGE OF PIPEBOOT
(REMOVE RELEASE PAPER
AFTER PIPEBOOT IS
CONFORMED TO PIPE)



FAB TAPE ON BOTTOM
EDGE BETWEEN VAPOR
RETARDER AND PIPEBOOT
(REMOVE RELEASE PAPER
AFTER PIPEBOOT IS
CONFORMED TO PIPE)

NOTE: This document provides information related to the installation of "pipeboots" and its components. This document does not attempt to address all aspects of an installation for all application. The information presented is general information in order to familiarize the individual with the overall scope of the project.