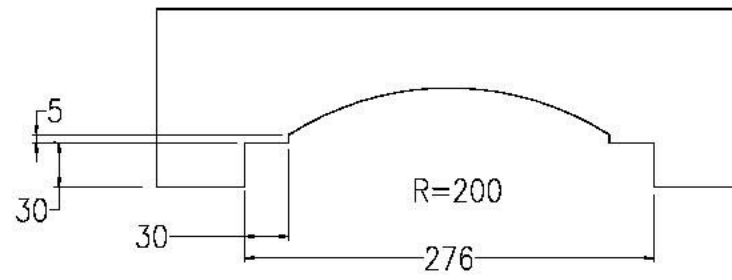
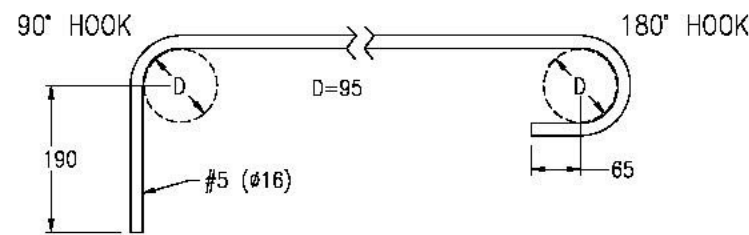


- NOTES:**
- 1) REINFORCING STEEL - ASTM A-615, $f_y=420$ MPa (MIN). EQUIVALENT INTERNATIONAL REINFORCING BARS ARE SHOWN IN PARENTHESIS. THE SUBSTITUTION OF NON ASTM BAR SIZES MUST BE APPROVED BY OBO PER THE REQUIREMENTS OF AEDG CHAPTER 5.1, SECTION 6.2.3.4.
 - 2) STEEL PIPE- ASTM A-53 GRADE-B, $f_y=250$ MPa (MIN)
 OPTION 1: SCHEDULE 140 (25.4 mm WALL THK.),
 OPTION 2: SCHEDULE 80 (15.09 mm WALL THK.),
 USE PL 25 x 2115 WITH OPTION 2.
 - 3) STEEL PLATE - ASTM A-36, $f_y=250$ MPa (MIN).
 - 4) CONCRETE - $F'_c = 25$ MPa @ 28 DAY (MIN) IN ACCORDANCE WITH ASTM C31, C39 AND C470.
 - 5) SOILS - ALL BACKFILL SHALL BE IN COMPLIANCE WITH THE REQUIREMENTS OF SE-STD-02.01, SECTION 5.1.2. IF THE LATERAL CAPACITY OF THE EXISTING SOIL IS NOT IN CONFORMANCE WITH THE REQUIREMENTS OF SD-STD-02.01, SECTION 5.1.2, THEN THE EXISTING SOIL SHALL BE REPLACED WITH SOIL MEETING THOSE REQUIREMENTS.
 - 6) STAGGERED, CLASS-A TENSION SPLICES SHALL BE ALLOWED FOR SPlicing OF HORIZONTAL BARS.
 - 7) CROSSTIE: THE #5 (#16) CROSSTIE HAS 90° AND 180° HOOK AT EACH END. (SEE DETAIL D) THE 90° HOOK SHOULD BE PLACED AT THE ATTACK SIDE OF THE FOOTING. PROVIDE 7-PAIR CROSSTIES COMBINING WITH THE FIRST ROW OF THE STIRRUP AT EACH SIDE OF THE BOLLARD. (SEE ELEVATION 1)
 - 8) ALL DIMENSIONS WITH A DECIMAL ARE IN METERS, ALL DIMENSIONS WITHOUT A DECIMAL ARE IN MILLIMETERS U.N.O.

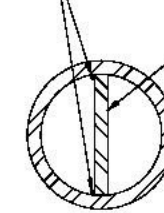


(C) TEMPLATE DETAIL
N.T.S.



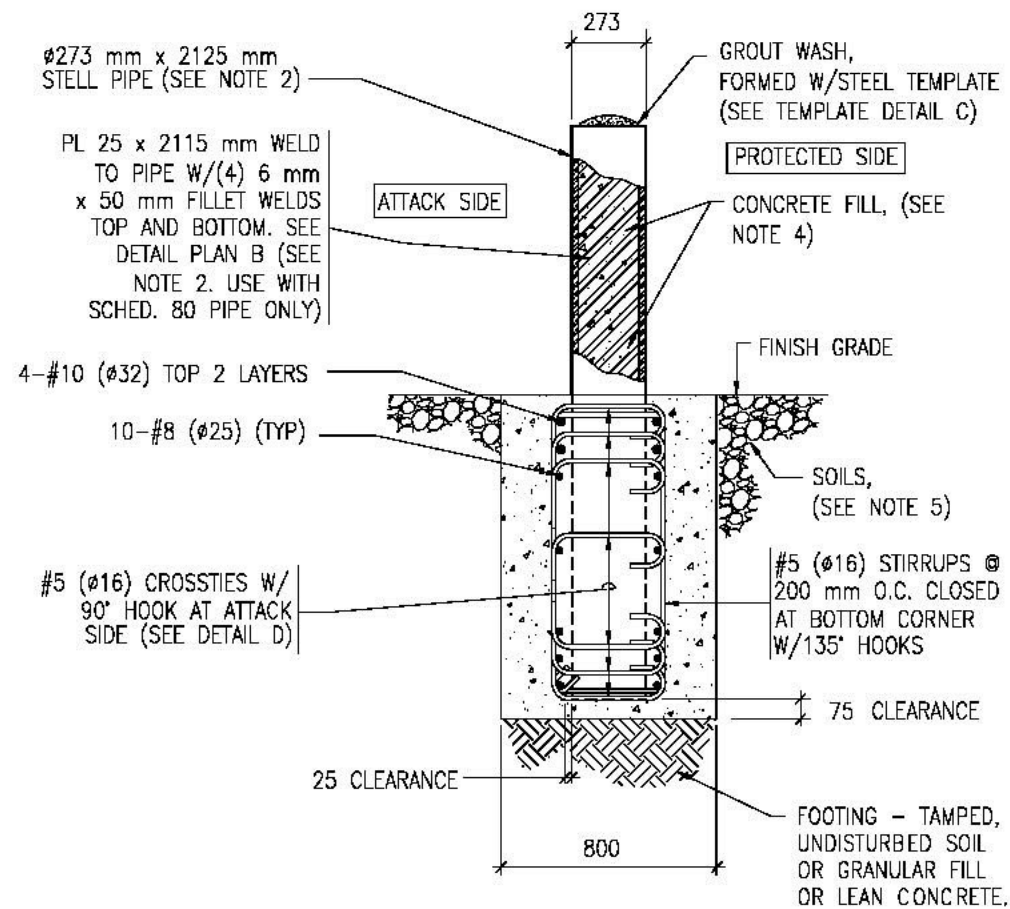
(D) CROSSTIE DETAIL
N.T.S. (28 CROSSTIES PER BOLLARD)

BOTH ENDS OF PIPE $\begin{matrix} 6 \\ 6 \end{matrix} \begin{matrix} 50 \\ 50 \end{matrix}$

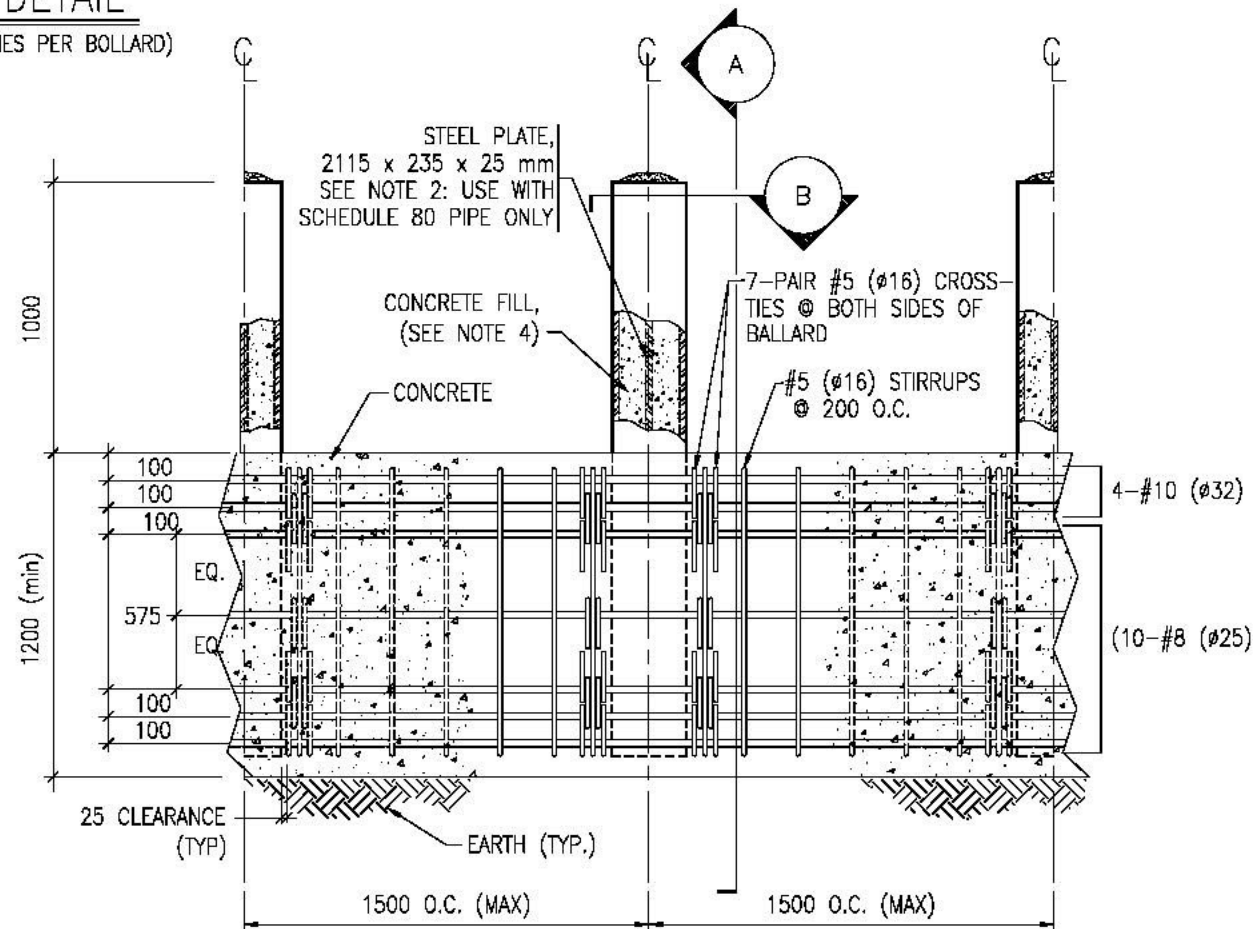


(B) DETAIL PLAN
N.T.S.

NOTE: WELD STEEL PLATE W/IN STEEL PIPE PARALLEL TO VEHICLE TRAVEL DIRECTION (SEE NOTE 2: USE WITH SCHEDULE 80 PIPE ONLY)



(A) SECTION - A
N.T.S.



(1) ELEVATION - FRONT ATTACK SIDE
N.T.S.



United States Department of State
OVERSEAS BUILDINGS OPERATIONS
Washington, D.C.

STANDARD PERIMETER DETAILS
for
AEDG SECTION 14.10

WARNING: This document is the property of the U.S. Government. Further reproduction and/or distribution outside the contractor team is prohibited without the express written approval of:
U.S. Department of State
AT&T
Washington, DC 20520

Rev Number	Description	Date

Released For Construction: OBO/PE/NE OBO/PE/NE

Drawing Title: **250 mm ANTI-RAM BOLLARD TYPE DS-22**

OBO Project Number: NONE 500 1000 1500 2000
 OBO File Name: BOLLRD DS-22.DWG
 OBO Plot Scale: 1:1

Date: 8/29/2003
 Drawn By: JEH-BAC
 Checked By: JPH
 Project Number: **S-9**
 Classification: SENSITIVE BUT UNCLASSIFIED