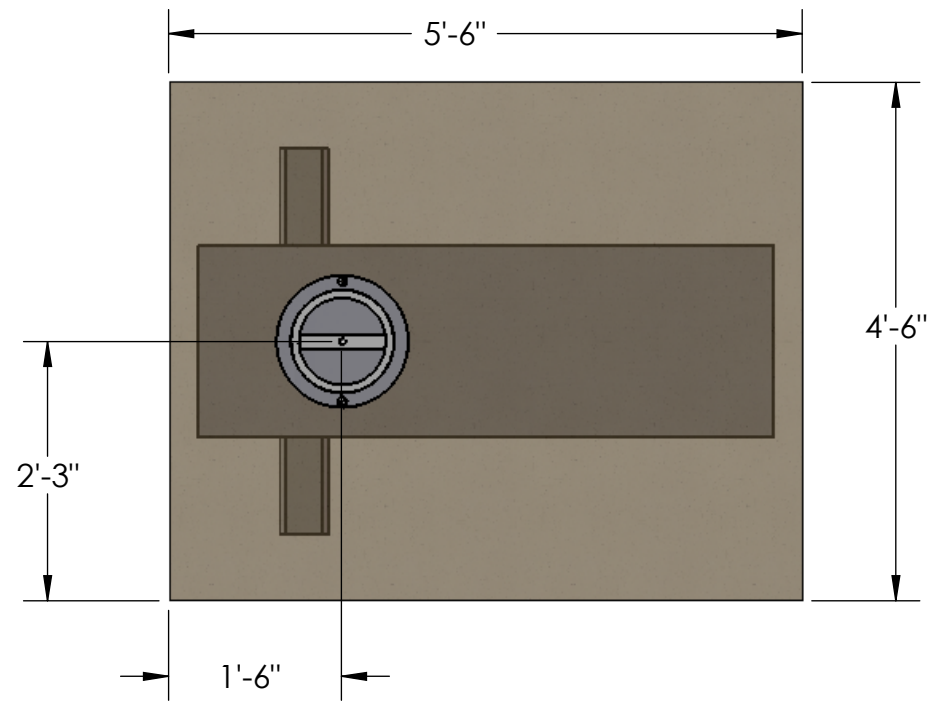
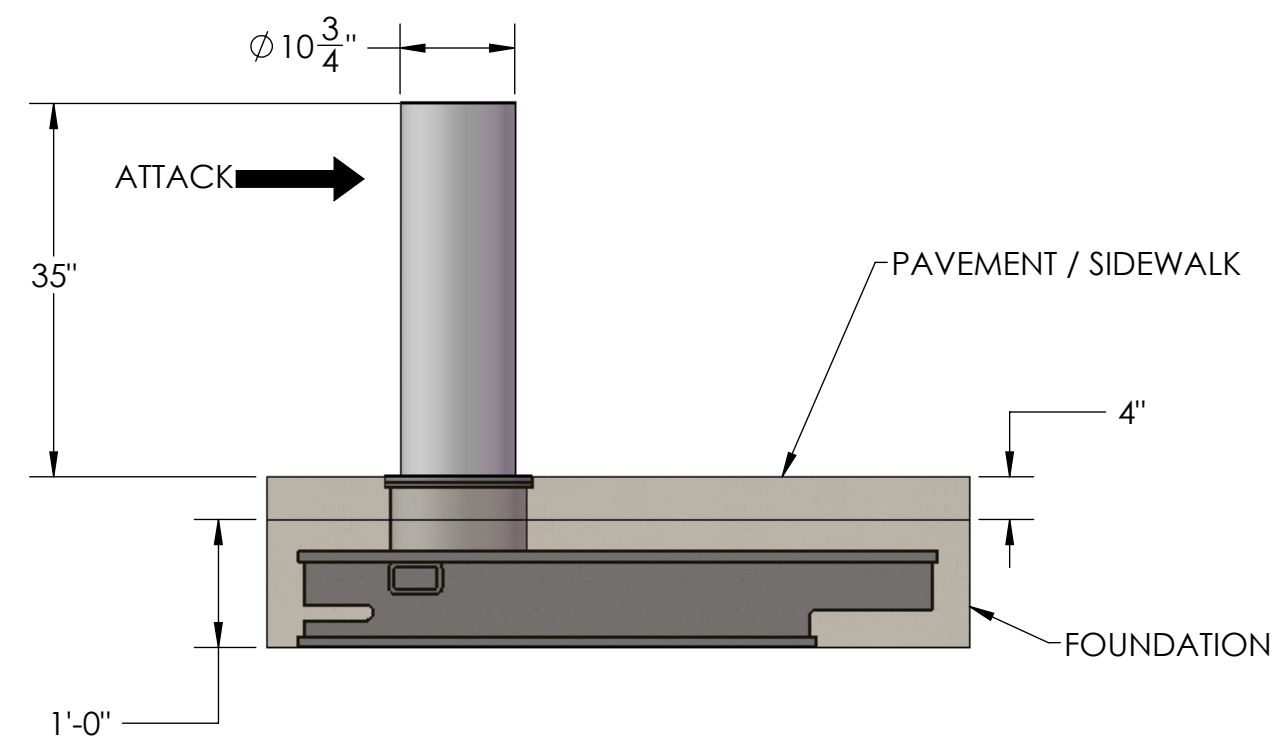


D



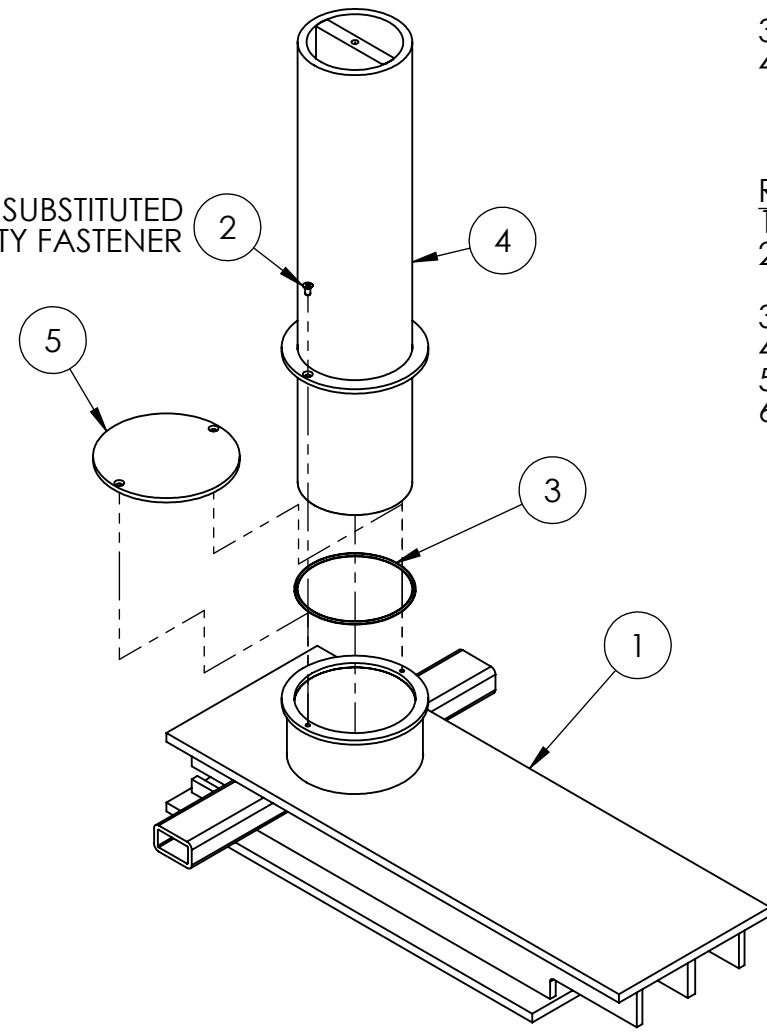
C

B



A

ITEM 2 CAN BE SUBSTITUTED WITH A SECURITY FASTENER




NOTE:

1. MAXIMUM BOLLARD SPACING IS 4'-6"
2. FOUNDATION MUST EXTEND A MINIMUM OF 2 FEET BEYOND LAST BOLLARD IN SET
3. SEE SEPARATE SHEET FOR FOUNDATION DETAILS
4. FINISH TO BE DETERMINED BY PO

REMOVAL INSTRUCTIONS:

1. REMOVE DECORATIVE SLEEVE (NOT SHOWN)
2. INSTALL A 3/4" EYE BOLT AND LIFTING STRAP INTO TOP OF BOLLARD
3. REMOVE (2) FLAT HEAD SCREWS
4. REMOVE BOLLARD (580LB) USING A FORK LIFT
5. INSTALL RECEIVER CAP USING (2) SECURITY SCREWS
6. REVERSE STEPS 1-5 FOR BOLLARD INSTALLATION

ITEM NO.	PART NUMBER	DESCRIPTION	QTY.
1	SU-RSWB3610-K8-A01	K8 REMOVABLE BASE (STD)	1
2	MMC 90585A712	1/2-13 X1 Flat Socket Head Cap Screw	2
3	SU-RSWB3610-K8-C14	10" BOLLARD GASKET	1
4	SU-RSWB3610-K8-A02	K8 REMOVABLE BOLLARD WELDMENT	1
5	SU-RSWB3610-K8-C17	10" REMOVABLE BOLLARD CAP	1

CAD GENERATED DRAWING NO MANUAL REVISIONS ALLOWED		 <p>SecureUSA, Inc. 4250 Keith Bridge Road Cumming, GA 30041 Toll Free: 888.222.4559/Facsimile: 770.889.7939 www.SecureUSA.net</p>	
TOLERANCES UNLESS OTHERWISE SPECIFIED DIMENSIONS ARE: INCHES X/X ±1/16 X ±0.05 XX ±0.01 XXX DWN ±0.005 XXXX ±0.0005 ANGLE ±30MIN BREAK ALL SHARP EDGES			
DRAWN BY	R. STATON	PROJECT NO	
CHECKED	H. COBB	K8 REMOVABLE BOLLARD ASSEMBLY	
DO NOT SCALE DRAWING	APVD	QTY	1
THIRD ANGLE PROJECTION	MATERIAL	SIZE	DWG NO
	FINISH	B	SU-RSWB3610-K8-GA
	DATE	9/12/07	REV
		SCALE: 1:18	WEIGHT: 7935.66
		SHEET 1 OF 1	

PROPRIETARY AND CONFIDENTIAL
 THIS DRAWING, UNLESS OTHERWISE NOTED, REMAINS CONFIDENTIAL PROPERTY AND IS DESCRIBED AS TRADE SECRET. IT SHALL NOT BE DISCLOSED, REPRODUCED OR USED FOR MANUFACTURE, DESIGN OR CONSTRUCTION WITHOUT THE EXPRESS AUTHORIZATION OF SECUREUSA, INC. THE RECIPIENT BY ACCEPTING THIS DRAWING, ASSUMES CUSTODY THEREOF AND UNDER THE ABOVE TERMS AGREE NOT TO ALLOW USE BY UNAUTHORIZED PERSONS.
 ©2006 SECUREUSA INC. (ALL RIGHTS RESERVED)